

# Southern Conference Baseball

702 North Pine Street, Spartanburg, SC 29303 • 864-591-5100 • Fax: 864-591-3448

Hannah Simmons, Media Relations Assistant (Baseball contact)

facebook.com/SouthernConference • twitter.com/SoConSports • instagram.com/SouthernConference



# 2019

#SoConBB

## Southern Conference baseball standings - through March 18

Team	Conference					Overall					
	Record	Pct	Home	Away	Streak	Record	Pct.	Home	Away	Neutral	Streak
ETSU	0-0	.000	0-0	0-0	-	14-4	.778	12-0	2-4	0-0	W5
UNCG	0-0	.000	0-0	0-0	-	13-4	.765	12-0	1-4	0-0	W7
Samford	0-0	.000	0-0	0-0	-	14-5	.737	8-2	6-3	0-0	W1
Wofford	0-0	.000	0-0	0-0	-	14-7	.667	14-5	0-2	1-0	W3
Western Carolina	0-0	.000	0-0	0-0	-	10-7	.588	8-7	1-0	0-0	L2
Mercer	0-0	.000	0-0	0-0	-	11-10	.524	10-6	1-4	0-0	W1
The Citadel	0-0	.000	0-0	0-0	-	7-12	.368	7-7	0-5	0-0	L4
Furman	0-0	.000	0-0	0-0	-	5-12	.294	4-7	1-4	0-1	L3
VMI	0-0	.000	0-0	0-0	-	4-15	.211	2-7	0-7	2-1	W1

## Upcoming Schedule (all times eastern)

### March 19 (Tuesday)

Tennessee at ETSU <sup>^</sup>	6 p.m.
South Carolina at Furman <sup>^</sup>	6 p.m.
Maryland Eastern Shore at Wofford <sup>%</sup> <sup>^</sup>	6 p.m.
North Carolina A&M at UNCG	6 p.m.
Georgia Tech at Mercer <sup>%</sup>	6 p.m.
Radford at VMI <sup>%</sup>	6 p.m.
Georgia Southern at The Citadel <sup>^</sup>	6:30 p.m.

### March 20 (Wednesday)

Maryland Eastern Shore at Wofford <sup>^</sup>	5 p.m.
Gardner-Webb at Western Carolina <sup>%</sup>	5 p.m.
The Citadel at Winthrop <sup>%</sup>	5 p.m.
Mississippi State at Samford <sup>%</sup>	7 p.m.

### March 22 (Friday)

UNCG at Mercer <sup>*^</sup>	6 p.m.
Wofford at Florida A&M	5 p.m.
Western Carolina at ETSU <sup>*^</sup>	6 p.m.
Furman at Samford <sup>*</sup>	6 p.m.
VMI at The Citadel <sup>*^</sup>	6:30 p.m.

### March 23 (Saturday)

Furman at Samford <sup>*</sup>	2 p.m.
Western Carolina at ETSU <sup>*</sup>	2 p.m.
VMI at The Citadel <sup>*^</sup>	2 p.m.
UNCG at Mercer <sup>*</sup>	2 p.m.
Wofford at Florida A&M	2 p.m.

### March 24 (Sunday)

Wofford at Florida A&M	12:30 p.m.
Western Carolina at ETSU <sup>*^</sup>	1 p.m.
VMI at The Citadel <sup>*^</sup>	1 p.m.
UNCG at Mercer <sup>*</sup>	1 p.m.
Furman at Samford <sup>*</sup>	1 p.m.

\* = conference game

<sup>^</sup> = SDN

<sup>%</sup> = ESPN+

<sup>#</sup> = ESPN3

## Notes

•VMI's Jacob Menders had a no-hitter through 5 2/3 innings Friday against Lehigh. He finished nine innings, allowing just three hits, three walks and no earned runs with seven strikeouts in a no-decision.

•VMI's Ryan Hatten went 5-for-5 with two doubles and two home runs Saturday against Lehigh. He posted six RBIs and scored five times and boosted his season batting average nearly 130 points and his slugging percentage up to .459 from .125.

•Pitcher of the week, VMI's Zak Kent, was also named a Collegiate Baseball player of the week for tying VMI's program strikeout record with 15 in seven innings of work, during an 11-1 win over Lehigh.

•Wofford's head coach Todd Interdonato reached 300 career wins on March 16 against Lafayette.

•The Terriers pitching staff has 165 strikeouts to only 51 walks on the season.

•Samford' shortstop Branden Fryman enters the week on a 12-game hit streak, the longest streak on the team so far this season.

•ETSU is off to their best start in Thomas Stadium history with a 12-0 record, following four straight weekend sweeps.

•Western Carolina's Justice Bigbie hit his second inside-the-park home run this season, moving into a tie for the team lead with five home runs this year.

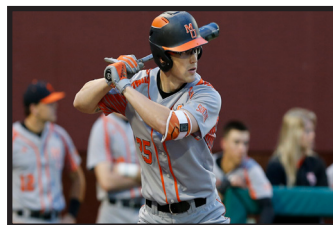
•The Catamounts beat their third-straight Power Five conference school this past weekend, with a 16-9 victory over Notre Dame.

•Eight teams open up their 2019 conference slate this coming weekend. Wofford, will open up their conference slate on March 29 against Mercer.

## Player of the Week

### Kel Johnson, OF, Gr. Mercer

Starting all five games for the Bears in the outfield this past week, Johnson hit .350 from the plate with 10 RBI's and four homeruns. The graduate student hit all four of his home runs against Binghamton, hitting two of them on Saturday. The Chattahoochee Hills, Georgia, native extended his reached base streak to 20 consecutive games with at least one hit in all four games this past week, including two hits in each of the three weekend games. He currently leads the SoCon in RBIs (27), home runs (10) and is tied for total bases (56) with teammate RJ Yeager.



## Pitcher of the Week

### Zak Kent, RHP, Jr. VMI

VMI's Kent went seven innings against Lehigh on Sunday, striking out 15 and giving up just one hit, one walk and one run while tossing 103 pitches. The junior tied the school record for strikeouts in a single game in the aluminum bat era, a mark set in 1998. He improved his record to 2-2 on the season and his ERA to 4.11. The Heathsville, Virginia, native was also named one of this week's Collegiate Baseball's players of the week and currently leads the conference in batters struck out (46).

## Preseason teams/polls

### Preseason Player of the Year

Caleb Webster, Jr., 3B, UNCG

### Preseason Pitcher of the Year

Sam Strickland, So., LHP, Samford

### First team

SP Dyland Spence, The Citadel  
 SP Sam Strickland, Samford  
 RP Nick Spear, Mercer  
 C Anthony Mulrine, Samford  
 1B Brooks Carlson, Samford  
 2B Austin Embler, UNCG  
 SS RJ Yeager, Mercer  
 3B Caleb Webster, UNCG  
 OF Jeffrey Brown, The Citadel  
 OF David Beam, ETSU  
 OF Colin Davis, Wofford  
 DH Le Bassett, Mercer

### Second Team

SP Nik Verbeke, Furman  
 SP Austin Higginbotham, Wofford  
 RP Anthony Garcia, Wofford  
 C Bryce Leasure, The Citadel  
 1B Jacob Huggins, VMI  
 2B Cullen Smith, ETSU  
 SS Branden Fryman, Samford  
 3B Justice Bigbie, Western Carolina  
 OF Jabari Richards, Furman  
 OF Matthew Koehler, Western Carolina  
 OF Kel Johnson, Mercer  
 DH Lawson Hill, Wofford

### Coaches Poll

Place	Team (1st-place votes)	Points
1.	Samford (7)	63
2.	UNCG (2)	55
3.	Mercer	52
4.	ETSU	35
5.	Wofford	33
6.	Western Carolina	31
7.	Furman	24
8.	The Citadel	22
9.	VMI	9

### Media Poll

Place	Team (1st-place votes)	Points
1.	Samford (8)	123
2.	UNCG (6)	107
3.	Mercer	98
4.	Wofford	83
5.	ETSU	64
6.	Furman	49
7.	Western Carolina	46
8.	VMI	32
9.	The Citadel	28

## MLB first-year player draft

The Southern Conference had 17 players selected in the 2018 MLB First-Year Player Draft, with Wofford's Adam Scott going in the fourth round at No. 133 overall. UNCG leads the way with six picks.

Round	Overall	Player	School	Pos.	Team
4	133	Adam Scott	Wofford	LHP	Cleveland Indians
5	152	Austin Cox	Mercer	LHP	Kansas City Royals
6	172	Andrew Moritz	UNCG	OF	Atlanta Braves
7	211	Andrew Wantz	UNCG	RHP	LA Dodgers
7	214	Josh Winder	VMI	RHP	Minnesota Twins
10	313	Robert Broom	Mercer	RHP	Cleveland Indians
12	367	Matt Pita	VMI	INF/OF	New York Yankees
15	436	Matt Frisbee	UNCG	RHP	San Francisco Giants
17	508	Cesar Trejo	UNCG	INF/OF	Seattle Mariners
20	609	Erin Baldwin	Samford	RHP	Arizona Diamondbacks
21	632	Nathan Eaton	VMI	INF/RHP	Kansas City Royals
22	662	Bryce Hensley	UNCG	LHP	Kansas City Royals
24	719	Troy Dixon	Samford	OF	Texas Rangers
25	738	Jack Maynard	UNCG	RHP	Chicago White Sox

## Preseason national honors

### Collegiate Baseball Preseason All-America Third Team

Le Bassett, 2B, Mercer  
 Sam Strickland, LHP, Samford

### NCBWA Preseason All-America Third Team

Brooks Carlson, C, Samford

### NCBWA Preseason Stopper Watch List

James Giambalvo, ETSU  
 Jordan Buster, The Citadel  
 Nick Spear, Mercer

## SoCon head coaches' career records

COACH, SCHOOL	SoCON (Yrs)	SCHOOL (Yrs)	CAREER (Yrs)
Tony Skole, CIT	119-160 (10th)	31-50 (2nd)	596-608-1 (23rd)
Joe Pennucci, ETSU	13-17 (2nd)	43-35 (2nd)	Same
Brett Harker, FUR	23-28 (3rd)	71-72 (3rd)	Same
Craig Gibson, MER	65-35 (5th)	537-361 (16th)	Same
Link Jarrett, UNCG	80-70 (7th)	201-153 (7th)	Same
Casey Dunn, SAM*	280-129 (11th)	460-389 (15th)	Same
Jonathan Hadra, VMI	38-64 (5th)	105-138 (5th)	Same
Bobby Moranda, WCU	167-135-1 (12th)	326-319-2 (12th)	Same
Todd Interdonato, WOF	134-184 (12th)	307-348 (12th)	Same

\* 124 overall wins and 58 SoCon wins from 2011-14 later vacated

## SoCon media relations directory

### The Citadel (CitadelSports.com)

John Brush (jbrush@citadel.edu)  
 (Office) 843-953-6795 (Press box) (803) 270-5716

### ETSU (ETSUBucs.com)

Mike Ezekiel (etsusportsinfo@etsu.edu)  
 (Office) 423-439-8212 (Press box) (256) 349-1290

### Furman (FurmanPaladins.com)

Hunter Reid (hunter.reid@furman.edu)  
 (Office) 864-294-2061 (Press box) 864-294-3066

### Mercer (MercerBears.com)

Gerrit Van Genderen  
 (gerrit.w.vangenderen@live.mercer.edu)  
 (Cell) 919-632-0217 (Press box) 919-632-0217

### UNCG (UNCGSpartans.com)

Jon Cole (jon.cole77@gmail.com)  
 (Cell) 336-302-5504 (Press box) 336-218-3885

### Samford (SamfordSports.com)

Joey Mullins (jmmulli1@samford.edu)  
 (Office) 205-726-2799 (Press box) 205-726-4167

### VMI (VMIKeydets.com)

Mike Carpenter (carpentermj@vmi.edu)  
 (Office) 540-464-7015 (Press box) 940-642-9865

### Western Carolina (CatamountSports.com)

Daniel Hooker (dhooker@email.wcu.edu)  
 (Office) 828-227-2339 (Press box) 828-227-7020

### Wofford (WoffordTerriers.com)

Brent Williamson (williamsondb@wofford.edu)  
 (Office) 864-597-4093 (Press box) 864-597-4478

### Southern Conference (SoConSports.com)

Hannah Simmons (hsimmons@socon.org)  
 Office: 864-591-5100

## SoCon Player/Pitcher of the Week

Player of the Week	Date	Pitcher of the Week
Jackson Greer, C, ETSU	F18	Shane Connolly, RHP, So., The Citadel
RJ Yeager, SS, Mercer	F25	Jordan Merritt, RHP, Sr., The Citadel
Daylan Nanny, OF, Western Carolina	M4	Hayes Heinecke, LHP, Fr., Wofford
Immanuel Wilder, OF, Western Carolina	M11	Hayes Heinecke, LHP, Fr., Wofford
Kel Johnson, OF, Mercer	M18	..... Zak Kent, RHP, Jr., VMI
	M25	
	A1	
	A8	
	A15	
	A22	
	A29	
	M6	
	M14	
	M19	

## SoCon Player/Pitcher of the Month

Player of the Month	Month	Pitcher of the Month
RJ Yeager, MER, So.	February	Jordan Merritt, CIT, Sr.,
	March	
	April	
	May	

## SoCon active career leaders

### Batting Average (Min. 100 AB)

1. .364	Caleb Webster, UNCG
2. .356	Brooks Carlson, Samford
3. .345	Justice Bigbie, Western Carolina
4. .339	Lawson Hill, Wofford
5. .333	Austin Embler, UNCG

### On-Base Pct. (Min. 100 AB)

1. .441	Brooks Carlson, Samford
2. .418	Brett Rodriguez, Wofford
3. .415	Austin Embler, UNCG
4. .412	RJ Yeager, Mercer
5. .410	Ryan Caveness, UNCG

### Slugging Pct. (Min. 100 AB)

1. .574	Brooks Carlson, Samford
2. .563	Colin Davis, Wofford
3. .519	Jabari Richards, Furman
4. .517	Justice Bigbie, Western Carolina
5. .508	RJ Yeager, Mercer

### Games Played

1. 165	Matthew Koehler, Western Carolina
2. 160	Ben Penden, The Citadel
3. 149	Austin Embler, UNCG
4. 146	Jabari Richards, Furman
5. 139	Branden Fryman, Samford

### Runs

1. 115	Austin Embler, UNCG
2. 111	Matthew Koehler, Western Carolina
3. 110	Jabari Richards, Furman
4. 105	Caleb Webster, UNCG
5. 94	Branden Fryman, Samford

### Hits

1. 187	Caleb Webster, UNCG
2. 184	Austin Embler, UNCG
3. 164	Jabari Richards, Furman
4. 163	Branden Fryman, Samford
5. 148	Matthew Koehler, Western Carolina

### Runs Batted In

1. 94	Ben Peden, The Citadel
2. 91	Anthony Mulrine, Samford
3. 89	Jabari Richards, Furman
4. 86	Caleb Webster, UNCG
5. 76	Austin Embler, UNCG

### Doubles

1. 33	Cullen Smith, ETSU
2. 31	Matthew Koehler, Western Carolina
3. 28	Jabari Richards, Furman
4. 28	Ben Peden, The Citadel
5. 27	Austin Embler, UNCG
T5.27	Caleb Webster, UNCG

### Triples

1. 10	Jabari Richards, Furman
2. 6	Caleb Webster, UNCG
3. 6	Matthew Koehler, Western Carolina
T4.5	Austin Embler, UNCG
T4.5	Brett Rodriguez, Wofford

### Home Runs

1. 23	Jabari Richards, Furman
2. 17	Ben Peden, The Citadel
3. 16	Anthony Mulrine, Samford
T3.16	Ayrton Schafer, Samford
5. 14	Jackson Greer, ETSU
T5. 14	Colin Davis, Wofford
T5. 14	Matthew Koehler, Western Carolina

### Walks

1. 84	Brett Rodriguez, Wofford
2. 73	Austin Embler, UNCG
3. 65	Cullen Smith, ETSU
T4. 64	Ben Peden, The Citadel
T4. 64	Matthew Koehler, Western Carolina

### Stolen Bases

1. 54	Brett Rodriguez, Wofford
2. 41	Branden Fryman, Samford
3. 33	Jeffrey Brown, The Citadel
4. 31	Matthew Koehler, Western Carolina
5. 28	Andrew Orzel, Wofford

### ERA (Min. 100 IP)

1. 2.80	Samuel Strickland, Samford
2. 3.85	Chad Sykes, UNCG
3. 4.09	Micah Kaczor, ETSU
4. 4.26	Nick Spear, MER
5. 4.54	Stephen Jones, Samford

### Wins

1. 16	Austin Higginbotham, Wofford
2. 15	Kevin Coulter, Mercer
3. 12	Stephen Jones, Samford
T3. 12	Nick Spear, Mercer
5. 11	Samuel Strickland, Samford

### Saves

1. 14	Nick Spears, Mercer
2. 13	Chad Sykes, UNCG
3. 9	James Giambalvo, ETSU
4. 8	Jordan Buster, The Citadel
5. 7	Stephen Jones, Samford

### Opponent Batting Avg. (Min. 100 IP)

1. .213	Samuel Strickland, Samford
2. .222	Chad Sykes, UNCG
3. .231	Nick Spear, Mercer
4. .241	Zak Kent, VMI
T4. .244	Micah Kaczor, ETSU

### Appearances

1. 92	Nick Spear, Mercer
2. 90	Jordan Buster, The Citadel
3. 66	Jack Rude, Samford
T3.66	Chad Sykes, UNCG
5. 61	Kevin Coulter, Mercer

### Games Started

1. 40	Austin Higginbotham, Wofford
2. 34	Kevin Coulter, Mercer
T2. 34	Stephen Jones, Samford
4. 28	Zak Kent, VMI
5. 25	Dylan Spence, The Citadel

### Complete Games

1. 5	Austin Higginbotham, Wofford
10 players tied at 1	

### Shutouts

1. 1	Shane Connolly, The Citadel
2. 1	Austin Higginbotham, Wofford
3. 1	Hayes Heinecke, Wofford

### Innings Pitched

1. 255.0	Austin Higginbotham, Wofford
2. 218.1	Kevin Coulter, Mercer
3. 180.1	Stephen Jones, Samford
4. 156.1	Zak Kent, VMI
5. 155.2	Dylan Spence, The Citadel

### Strikeouts

1. 189	Austin Higginbotham, Wofford
2. 176	Nick Spear, Mercer
3. 172	Zak Kent, VMI
4. 155	Kevin Coulter, Mercer
5. 145	Jordan Buster, The Citadel

### Strikeouts Per 9 IP (Min. 100 IP)

1. 12.51	Nick Spear, Mercer
2. 10.48	Chad Sykes, UNCG
3. 10.44	Jordan Buster, The Citadel
4. 9.90	Zak Kent, VMI
5. 9.51	Taylor Purus, Western Carolina

### Hits Allowed Per 9 IP (Min. 100 IP)

1. 7.22	Samuel Strickland, Samford
2. 7.32	Chad Sykes, UNCG
3. 7.74	Nick Spear, Mercer
4. 8.35	Zak Kent, VMI
5. 8.42	Jordan Buster, The Citadel

# Southern Conference versus nonconference opponents

## America East (3-6)

3/8 Binghamton 4, VMI 2  
 3/9 Binghamton 8, VMI 4  
 3/10 Binghamton 2, VMI 1  
 3/15 Maine 2, Samford 5  
 3/15 Binghamton 6, Mercer 4  
 3/16 Binghamton 10, Mercer 7  
 3/16 Maine 6, Samford 4  
 3/17 Binghamton 3, Mercer 10  
 3/17 Maine 0, Samford 4

## American Athletic (1-3)

2/15 Samford 4, South Florida 7  
 2/16 Samford 7, South Florida 3  
 2/17 Samford 1, South Florida 4  
 3/3 ECU 12, Western Carolina 6  
 4/16 The Citadel at South Florida 7 p.m.  
 4/19 The Citadel at South Florida 6:30 p.m.  
 4/20 The Citadel at South Florida 1 p.m.

## Atlantic 10 (3-2)

2/15 Saint Joseph's 3, VMI 9  
 2/17 Saint Joseph's 4, VMI 9  
 2/21 VCU 13, Wofford 3  
 2/24 Saint John's 5, Western Carolina 2  
 2/24 Saint John's 4, Western Carolina 13  
 3/6 VCU at VMI Postponed  
 3/26 VMI at VCU 6:30 p.m.  
 4/10 George Mason at UNCG 6 p.m.  
 4/13 George Mason at UNCG 3 p.m.  
 4/14 George Mason at UNCG 1 p.m.  
 4/16 Richmond at VMI 6 p.m.

## Atlantic Coast (1-16)

2/19 ETSU 3, Virginia Tech 9  
 2/19 VMI 0, Virginia 9  
 2/23 UNCG at Virginia Tech Cancelled  
 2/23 VMI 6, Clemson 8  
 2/23 VMI 2, Clemson 8  
 2/24 VMI 6, Clemson 11  
 2/24 UNCG 4, Virginia Tech 12  
 2/25 UNCG 1, Virginia Tech 2  
 2/26 ETSU 3, Clemson 14  
 2/27 UNCG 1, Wake Forest 2 (10.inn)  
 3/1 Mercer 5, Florida State 9  
 3/1 Furman at Wake Forest Postponed  
 3/1 Mercer 5, Florida State 9  
 3/2 Mercer 1, Florida State 12  
 3/2 Wake Forest 13, Furman 7  
 3/3 Mercer 1, Florida State 5  
 3/3 Wake Forest 5, Furman 1  
 3/5 Clemson 3, Furman 1  
 3/13 Notre Dame 9, Western Carolina 16  
 3/19 Georgia Tech at Mercer 6 p.m.  
 3/26 Wake Forest at UNCG 6 p.m.  
 4/2 Virginia Tech at VMI 6 p.m.  
 4/9 UNCG at UNC 6 p.m.  
 4/10 Virginia Tech at ETSU 6 p.m.  
 4/10 Furman at Clemson 6:30 p.m.  
 4/23 VMI at Virginia Tech 6 p.m.  
 5/3 Western Carolina at Georgia Tech 7 p.m.  
 5/4 Western Carolina at Georgia Tech 4 p.m.  
 5/5 Western Carolina at Georgia Tech 1 p.m.  
 5/8 The Citadel at Clemson 6 p.m.  
 5/14 Mercer at Georgia Tech TBA

## Atlantic Sun (9-0)

3/1 North Alabama 3, The Citadel 6  
 3/2 North Alabama 4, The Citadel 7  
 3/3 North Alabama 3, The Citadel 8  
 3/8 Kennesaw State 5, Samford 6  
 3/9 Kennesaw State 2, Samford 3  
 3/10 Kennesaw State 3, Samford 6  
 3/15 New Jersey Institute of Technology 2, ETSU 12  
 3/16 New Jersey Institute of Technology 1, ETSU 8  
 3/17 New Jersey Institute of Technology 2, ETSU 3  
 4/16 Kennesaw State at Mercer TBA  
 5/8 Mercer at Kennesaw State TBA

## Big East (2-1)

2/22 Xavier 7, Samford 10  
 2/23 Xavier 7, Samford 1  
 2/24 Xavier 9, Samford 10  
 3/29 Georgetown at ETSU 6 p.m.  
 3/30 Georgetown at ESTU 2 p.m.  
 3/31 Georgetown at ETSU 1 p.m.

## Big South (12-3)

2/19 UNCG 6, High Point 2  
 2/25 Furman 7, Gardner-Webb 2  
 2/24 Radford 9, Wofford 10 (10 inn.)  
 2/26 UNC Asheville 2, Wofford 14  
 2/27 UNC Asheville 4, Furman 3  
 2/27 Wofford 3, Charleston Southern 4 (11 inn.)  
 3/5 UNCG 3, Winthrop 6  
 3/6 USC Upstate 1, Wofford 3  
 3/6 Western Carolina 16, UNC Asheville 4  
 3/9 Charleston Southern 1, The Citadel 10  
 3/9 Wofford 14, Garnder-Webb 5  
 3/9 Wofford 6, Garnder-Webb 2  
 3/10 Charleston Southern 3, The Citadel 4  
 3/10 Gardner-Webb 5, Wofford 7  
 3/13 Furman 7, USC Upstate 4  
 3/19 Radford at VMI 6 p.m.  
 3/20 Gardner-Webb at Western Carolina 5 p.m.  
 3/20 The Citadel at Winthrop 6 p.m.  
 3/26 Furman at Winthrop 6 p.m.  
 3/27 Wofford at Presbyetrain 3 p.m.  
 3/27 Gardner-Webb at Furman 6 p.m.  
 3/27 UNC Asheville at ETSU 6 p.m.  
 4/2 Winthrop at Furman 6 p.m.  
 4/2 High Point at UNCG 6 p.m.  
 4/2 Radford at ETSU 6 p.m.  
 4/3 The Citdel at Charleston Southern 6 p.m.  
 4/9 VMI at Radford 6 p.m.  
 4/10 Western Carolina at Gardner-Webb 6 p.m.  
 4/10 Prebyteran at Wofford 6 p.m.  
 4/16 Campbell at UNCG 6 p.m.  
 4/16 Wofford at Winthrop 6 p.m.  
 4/16 Furman at UNC Asheville 6 p.m.  
 4/23 Wofford at UNC Asheville 6 p.m.  
 4/24 UNC Asheville at Western Carolina 6 p.m.  
 4/30 VMI at Longwood 5 p.m.  
 4/30 ETSU at UNC Asheville 6 p.m.  
 5/8 Wofford at USC Upstate 6 p.m.  
 5/14 Gardner-Webb at ETSU 6 p.m.  
 5/14 Winthrop at UNCG 6 p.m.

## Big Ten (2-3)

2/22 Michigan 2, The Citadel 0  
 2/23 Michigan 9, The Citadel 1  
 2/24 Michigan 6, The Citadel 3  
 3/8 Ohio State Furman Postponed  
 3/9 Michigan State 4, Furman 6 (10 inns.)  
 3/10 Ohio State 5, Western Carolina 8

## Big 12 (0-0)

4/26 Kansas at Furman 6 p.m.  
 4/27 Kansas at Furman 7 p.m.  
 4/28 Kansas at Furman 12 p.m.

## Colonial Athletic (1-3)

2/16 VMI 2, UNCW 3  
 2/17 VMI 3, UNCW 5  
 2/26 VMI 4, James Madison 5  
 3/12 Elon 3, UNCG 4  
 3/15 Elon at Western Carolina 4 p.m.  
 3/15 Furman at College of Charleston 4 p.m.  
 3/16 Furman at College of Charleston 2 p.m.  
 3/16 Elon at Western Carolina 2 p.m.  
 3/17 Elon at Western Carolina 1 p.m.  
 3/17 Furman at College of Charleston 1 p.m.  
 3/26 The Citadel at College of Charleston 6 p.m.  
 3/27 James Madison at VMI 6 p.m.  
 4/9 The Citadel at College of Charleston 6:30 p.m.  
 4/23 UNCG at Elon 6 p.m.  
 5/14 The Citadel at College of Charleston 2 p.m.

## Conference USA (0-1)

2/27 VMI 0, ODU 5  
 3/26 Samford at UAB 7:30 p.m.  
 4/2 UAB at Samford 7 p.m.  
 4/3 Western Carolina at Marshall 3 p.m.  
 4/30 UNCG at Charlotte 6 p.m.  
 5/14 ODU at VMI 6 p.m.

## Horizon (4-2)

2/15 Oakland 9, Western Carolina 21  
 2/16 Oakland 8, Western Carolina 9  
 2/17 Oakland 2, Western Carolina 12  
 3/1 Wright State 5, Western Carolina 3  
 3/1 Northern Kentucky at VMI Cancelled  
 3/2 Northern Kentucky 3, VMI 8  
 3/2 Northern Kentucky 7, VMI 6  
 4/2 Wofford at Wright State 3 p.m.

## Ivy (8-3)

3/1 Penn at UNCG Cancelled  
 3/1 Harvard 5, Wofford 6  
 3/2 Harvard 0, Wofford 8  
 3/2 Harvard 5, Wofford 4  
 3/3 Harvard 6, Wofford 1  
 3/2 Penn 3, UNCG 5  
 3/2 Harvard 0, Wofford 8  
 3/2 Harvard 5, Wofford 4  
 3/4 Penn 7, UNCG 10  
 3/8 Princeton 2, UNCG 3  
 3/9 Princeton 3, UNCG 5  
 3/10 Princeton 3, UNCG 5

## Metro Atlantic Athletic (5-0)

2/15 Iona 3, ETSU 4  
 2/15 Quinnipiac 5, UNCG 12  
 2/16 Iona 3, ETSU 14  
 2/16 Quinnipiac 2, UNCG 8  
 2/17 Iona 4, ETSU 14  
 2/17 Quinnipiac at UNCG Cancelled  
 3/5 Samford 5, Jacksonville State 3  
 3/15 Jacksonville at UNCG 4 p.m.  
 3/16 Jacksonville at UNCG 2 p.m.

## Mid-American (2-2)

2/15 Ohio 0, Wofford 2  
 2/16 Ohio 6, Wofford 4  
 2/17 Ohio 2, Wofford 5  
 2/27 Kent State 11, The Citadel 2

## Mid-Eastern Athletic (6-1)

2/15 Delaware State 3, The Citadel 1  
 2/16 Delaware State 0, The Citadel 5  
 2/17 Delaware State 3, The Citadel 12  
 2/25 Florida A&M 7, Mercer 8  
 2/26 Florida A&M 3, Mercer 16  
 2/27 Florida A&M 1, Mercer 5  
 3/12 Savannah State 1, Mercer 8  
 3/19 Maryland Eastern Shore at Wofford 6 p.m.  
 3/19 North Carolina A&M at UNCG 6 p.m.  
 3/20 Maryland Eastern Shore at Wofford 5 p.m.  
 3/22 Wofford at Florida A&M 5 p.m.  
 3/23 Wofford at Florida A&M 2 p.m.  
 3/24 Wofford at Florida A&M 12:30 p.m.  
 4/23 Mercer at Florida A&M TBA

## Missouri Valley (6-2)

2/15 Evansville 4, Mercer 5  
 2/16 Evansville 6, Mercer 7  
 2/17 Evansville 7, Mercer 2  
 2/26 Indiana State 8, Western Carolina 4  
 2/27 Indiana State 9, Western Carolina 10  
 3/8 Indiana State 7, Mercer 12  
 3/9 Indiana State 3, Mercer 7  
 3/10 Indiana State 9, Mercer 4  
 3/15 The Citadel at Indiana State 2 p.m.  
 3/16 The Citadel at Indiana State 2 p.m.  
 3/17 The Citadel at Indiana State 1 p.m.

## Northeast (6-1)

2/23 Wagner 1, ETSU 6  
 2/24 Wagner 3, ETSU 4  
 2/24 Wagner 1, ETSU 7  
 3/1 LIU Brooklyn 3, ETSU 10  
 3/2 LIU Brooklyn 2, ETSU 7  
 3/3 LIU Brooklyn 2, ETSU 7  
 3/13 Bryant 12, Wofford 11

## Ohio Valley (1-2)

2/15 Morehead State 6, Furman 3  
 2/16 Morehead State 6, Furman 5  
 2/17 Morehead State 11, Furman 16  
 3/17 Jacksonville State at UNCG 1 p.m.  
 4/5 UT Martin at Samford 7 p.m.  
 4/6 UT Martin at Samford 3 p.m.  
 4/7 UT Martin at Samford 2 p.m.  
 4/30 Jacksonville State at Samford 7 p.m.  
 5/10 Mercer at Belmont TBA  
 5/11 Mercer at Belmont TBA  
 5/12 Mercer at Belmont TBA  
 5/14 Western Carolina at Eastern Kentucky 6:30 p.m.  
 5/16 Eastern Illinois at VMI 6 p.m.  
 5/17 Eastern Illinois at VMI 4 p.m.  
 5/18 Eastern Illinois at VMI 1 p.m.

## Patriot (0-0)

3/15 Lafayette at Wofford 5 p.m.

March 19, 2019

## Nonconference continued

3/15	Lehigh at VMI	6 p.m.
3/16	Lafayette at Wofford	2 p.m.
3/17	Lehigh at VMI	1 p.m.
3/17	Lafayette at Wofford	1 p.m.

### Pac 12 (1-0)

3/2	Utah 14, Western Carolina 0
-----	-----------------------------

### Southeastern (0-4)

3/5	The Citadel 0, <b>South Carolina 9</b>	
3/6	ETSU 4, <b>Vanderbilt 12</b>	
3/12	<b>South Carolina 10</b> , The Citadel 9	
3/12	Samford 6, <b>Vanderbilt 11</b>	
3/19	Tennessee at ETSU	6 p.m.
3/19	South Carolina at Furman	6 p.m.
3/20	Mississippi at Samford	7 p.m.
3/26	ETSU at Tennessee	6 p.m.
4/9	Alabama at Samford	7 p.m.
4/30	The Citadel at Georgia	6 p.m.
5/8	Furman at South Carolina	7 p.m.
5/14	Samford at Alabama	7 p.m.

### Southwestern Athletic (5-0)

2/22	Alabama A&M 0, <b>Mercer 21</b>	
2/23	Alabama A&M 1, <b>Mercer 10</b>	
2/24	Alabama A&M 7, <b>Mercer 8</b>	
2/26	<b>Samford 10</b> , Alabama State 5	
3/6	Alabama State 3, <b>Samford 8</b>	
4/23	Alabama A&M at Samford	7 p.m.

### Sun Belt (10-3)

3/1	<b>Samford 13</b> , Georgia State 2	
3/2	<b>Samford 8</b> , Georgia State 6	
3/2	<b>Samford 2</b> , Georgia State 1	
3/5	Georgia State 11, <b>Mercer 14</b>	
3/6	Mercer 3, <b>Georgia Southern 13</b>	
3/8	ETSU 5, <b>Georgia State 6</b>	
3/8	Kennesaw State 5, <b>Samford 6</b>	
3/9	Appalachian State 5, <b>Furman 6</b>	
3/9	<b>ETSU 5</b> , Georgia State 1	
3/9	Kennesaw State 2, <b>Samford 3</b>	
3/10	<b>Appalachian State 14</b> , Furman 0	
3/10	<b>ETSU 8</b> , Georgia State 2	
3/10	Kennesaw State 3, <b>Samford 6</b>	
3/19	Georgia Southern at The Citadel	6:30 p.m.
3/26	Georgia Southern at Mercer	TBA
4/3	Furman at Georgia State	5 p.m.
4/9	Appalachian State at Western Carolina	5 p.m.

4/10	Mercer at Georgia State	
TBA		
4/16	Appalachian State at ETSU	
6 p.m.		
4/16	Samford at Troy	7 p.m.
4/23	The Citadel at Georgia Southern	6 p.m.
4/24	Georgia State at Furman	6 p.m.
4/24	Troy at Samford	7 p.m.
4/30	Western Carolina at Appalachian State	5 p.m.

Total ..... **82-55 (.599)**

### All times Eastern

**Winnings Teams in Bold**  
Home Teams Underlined

## SoCon vs. ranked teams

Date	SoCon	Opponent	Result
2/22	The Citadel	#17 Michigan	L, 0-2
2/23	The Citadel	#17 Michigan	L, 1-9
2/23	VMI	#14 Clemson	L, 2-8
2/23	VMI	#14 Clemson	L, 6-8
2/24	The Citadel	#17 Michigan	L, 3-6
2/24	VMI	#14 Clemson	L, 6-11
2/26	ETSU	#14 Clemson	L, 3-14
3/1	Mercer	#11 Florida State	L, 5-9
3/2	Mercer	#11 Florida State	L, 1-12
3/3	Western Carolina	#9 ECU	L, 6-12
3/3	Mercer	#11 Florida State	L, 1-5
3/5	The Citadel	#24 South Carolina	L, 0-9
3/6	ETSU	#1 Vanderbilt	L, 4-12
3/12	The Citadel	#22 South Carolina	L, 9-10
3/16	Samford	#1 Vanderbilt	L, 6-11

**Record: 0-15 (.000)**

## Southern Conference versus other conferences (1997-2018)

	1997	1998	1999	2000	2001	2002	2003	2004	2005	2006	2007	2008	2009	2010	2011	2012	2013	2014	2015	2016	2017	2018
America East	0-1	1-0	0-0	4-1	4-0	8-2	5-3	0-1	5-5	6-2	3-0	9-3	3-0	2-1	1-0	2-1	3-1	3-3	7-2	3-0	2-3	
American Athletic	-	-	-	-	-	-	-	-	-	-	-	-	-	-	-	-	-	4-6	1-3	0-4	3-2	4-10
Atlantic Coast	5-25	8-34	7-32	8-31	5-30	3-41	5-33	12-34	9-28	9-24	12-27	10-33	11-32	14-17	7-29	13-26	6-29	13-25	9-18	6-21	3-16	5-17
Atlantic Sun	8-13	11-16	10-10	10-10-1	11-5	8-6	11-9	15-14	18-13	16-7	22-14	20-7	12-11	17-8	13-17	17-12	13-11	12-9	7-8	6-12	4-8	6-4
Atlantic 10	0-3	5-2	3-1	1-0	0-2	7-9	2-1	7-1	6-4	9-3-1	15-4	4-2	6-4	4-2	7-3	7-1	12-9	8-4	2-5	8-12	6-6	8-7
Big East	0-6	1-4	6-7-1	4-2	9-2	4-7	1-2	5-4	4-3	6-3	2-1	5-1	1-2	3-4	7-7	2-2	4-8	6-1	4-2	13-2	5-3	5-0
Big South	27-13	23-23	22-25	27-38	30-29	22-33	27-28	29-20	31-21	24-18	18-18	34-14	44-10	41-23	25-26-1	33-22	31-24	32-21	18-30	29-20	22-19	20-14
Big Ten	0-2	0-1	0-0	0-0	2-1	4-2	0-0	0-0	0-1	4-2	2-2	1-1	1-0	3-3	0-1	6-9	7-3	6-4	5-1	7-4	7-6	1-1
Big 12	0-0	0-0	0-0	0-0	0-1	0-0	2-3	0-1	0-0	1-2	0-0	0-0	0-1	0-2	0-0	2-4	2-0	0-2	0-3	7-4	0-0	1-2
Big West	0-0	0-0	0-0	0-0	0-0	0-0	0-0	0-0	0-0	0-0	0-0	0-0	0-0	0-0	0-0	0-0	0-0	0-0	0-0	0-0	0-0	0-0
Colonial	13-15	12-8	4-13	5-14	9-12	6-8	6-4	6-5	9-4	10-4	9-3	9-7	6-3	5-2	11-7	7-8	7-8	5-8	5-11	3-16	8-8	6-7
Conference USA	1-6	3-4	2-5	1-9	0-8	2-4	2-7	4-11	5-5	4-2	3-6	4-6	2-6	7-7	4-4	2-3	4-3	4-3	1-4	4-5	4-4	5-3
Great West	-	-	-	-	-	-	-	-	0-0	0-0	0-0	0-0	0-0	2-1	1-0	0-0	0-0	0-0	0-0	0-0	0-0	0-0
Horizon	-	-	-	-	-	-	-	-	5-1	6-2	1-0	2-0	0-0	5-0	7-4	0-1	3-1	1-3	0-2	1-2	0-0	5-2
Independents	10-7	1-3	11-6-1	0-0	1-1	1-1	6-2	2-4	3-2	3-1	9-2	6-0	4-2	0-0	0-0	0-0	0-0	0-0	0-0	0-0	0-0	0-0
Ivy	3-2	2-1	1-2	2-3	1-2	2-1	2-0	3-4-1	7-1	14-4	17-8	12-4	2-1	8-1	7-1	4-1	3-4	2-1	6-7	1-2	6-6	11-2
Metro Atlantic	1-0	0-1	1-1	1-0	4-2	8-0	9-2	5-0	6-1	12-1	8-1	8-7	0-0	8-0	4-1	8-1	6-1	4-2	7-0	11-1	5-3	13-4
Mid-American	4-6	3-6	4-4	2-1	3-2	2-0	6-3	11-6	7-3	8-5	3-1	4-2	9-5	6-1	11-1	10-3	4-1	4-6	6-3	4-4	11-7	1-5
Mid-Eastern	6-1	8-0	13-1	11-1	9-0	22-3	10-2	8-3	9-3	10-4	9-3	10-4	13-1	4-0	7-0	13-0	8-1	11-3	14-2	11-3	20-8	5-3
Missouri Valley	0-0	0-0	0-0	0-0	0-0	0-0	0-0	0-0	0-0	0-1	0-0	4-3	1-3	3-3	0-0	0-0	0-1	0-0	1-2	1-0	2-1	0-3
Mountain West	-	-	-	3-1	1-4	0-0	0-3	0-0	1-0	1-3	0-0	0-0	4-4	0-0	0-0	2-0	0-0	0-0	3-0	0-0	0-0	0-0
Northeast	2-1	7-0	4-1	2-1	3-0	2-0	2-0	6-0	0-0	1-0	4-3	4-1	2-0	4-0	0-0	1-0	0-0	5-1	0-3	0-0	0-0	2-1
Ohio Valley	5-6	2-2-1	4-5	3-3	7-1	3-2	5-1	3-3	5-3	0-0	3-4	4-2	5-3	5-7	5-2	7-3	6-1	4-1	11-3	5-1	9-3	7-6
Pac-12	0-0	0-0	0-0	0-0	0-0	0-0	0-0	0-0	0-0	0-0	0-0	0-2	2-1	0-0	0-0	0-0	2-1	2-0	0-2	0-0	0-0	0-0
Patriot	5-0	2-4	1-2	3-1	4-2	5-2	8-0	1-0	3-0	3-0	11-7	1-1	4-1	4-4	2-2	1-1	4-1	4-0	6-1	8-2	7-1	8-1
Southeastern	3-26	4-24	4-21	1-37	6-28	2-20	4-20	2-20	7-15	7-23	4-20	3-18	8-14	5-20	9-12	10-17	7-20	6-19	4-16	3-10	6-13	8-15
Southland	0-0	0-0	0-0	0-0	0-0	0-0	0-0	0-0	0-0	0-0	1-2	2-1	0-0	0-1	0-0	0-0	0-0	0-0	0-0	0-0	0-0	4-1
SWAC	0-0	0-0	0-0	0-0	0-0	0-0	0-0	0-0	0-0	0-0	0-0	0-0	1-0	3-0	2-0	2-0	5-0	5-2	4-1	3-10	4-0	0-0
Summit	2-1	0-0	7-2	4-1	5-0	0-0	1-4	0-0	1-1	0-0	3-0	0-0	0-0	1-2	3-0	3-0	0-0	0-0	0-0	0-0	0-0	0-0
Sun Belt	0-2	1-1	0-3	0-0	0-2	1-3	0-0	1-2	1-2	0-4	0-1	0-0	0-2	1-1	2-1	6-2	2-4	5-0	6-4	3-11	5-10	7-11
West Coast	0-0	0-0	0-0	0-0	0-0	0-0	0-0	0-0	0-0	0-0	0-1	0-0	0-2	0-0	0-0	0-0	2-1	0-0	0-0	1-3	0-0	0-0
WAC	1-1	0-0	0-0	0-0	0-0	0-0	0-0	0-1	0-2	0-0	1-2	0-0	0-0	2-6	0-0	0-0	0-0	0-0	0-0	0-0	0-0	0-0
Reclassifying	-	-	-	-	-	-	-	-	0-0	3-1	0-0	0-0	5-0	4-0	7-1	0-0	0-0	0-0	0-0	0-0	0-0	0-0
<b>Total Wins</b>	<b>100</b>	<b>99</b>	<b>104</b>	<b>105</b>	<b>122</b>	<b>118</b>	<b>117</b>	<b>127</b>	<b>142</b>	<b>156</b>	<b>160</b>	<b>156</b>	<b>146</b>	<b>159</b>	<b>143</b>	<b>157</b>	<b>140</b>	<b>146</b>	<b>123</b>	<b>142</b>	<b>144</b>	<b>135</b>
<b>Total Losses</b>	<b>137</b>	<b>137</b>	<b>143</b>	<b>147</b>	<b>136</b>	<b>144</b>	<b>128</b>	<b>137</b>	<b>113</b>	<b>122</b>	<b>130</b>	<b>119</b>	<b>107</b>	<b>109</b>	<b>123</b>	<b>116</b>	<b>133</b>	<b>122</b>	<b>134</b>	<b>142</b>	<b>127</b>	<b>122</b>
<b>Total Ties</b>	<b>1</b>	<b>1</b>	<b>2</b>	<b>0</b>	<b>0</b>	<b>0</b>	<b>0</b>	<b>1</b>	<b>0</b>	<b>1</b>	<b>0</b>	<b>0</b>	<b>0</b>	<b>0</b>	<b>1</b>	<b>0</b>	<b>0</b>	<b>0</b>	<b>0</b>	<b>0</b>	<b>0</b>	<b>-</b>
<b>Win Pct.</b>	<b>.422</b>	<b>.420</b>	<b>.422</b>	<b>.417</b>	<b>.473</b>	<b>.450</b>	<b>.478</b>	<b>.481</b>	<b>.557</b>	<b>.561</b>	<b>.552</b>	<b>.567</b>	<b>.577</b>	<b>.593</b>	<b>.537</b>	<b>.575</b>	<b>.513</b>	<b>.545</b>	<b>.479</b>	<b>.500</b>	<b>.531</b>	<b>.525</b>

## Team-by-team results



### The Citadel

7-12, 0-0 SoCon

Date	Opponent	Time (ET)
F15	DELAWARE STATE	L, 1-3
F16	DELAWARE STATE	W, 5-0
F17	DELAWARE STATE	W, 12-3
F22	MICHIGAN	L, 0-2
F23	MICHIGAN	L, 1-9
F24	MICHIGAN	L, 3-6
F27	KENT STATE	L, 2-11
M1	NORTH ALABAMA	W, 6-3
M2	NORTH ALABAMA	W, 7-4
M3	NORTH ALABAMA	W, 8-3
M5	at South Carolina	L, 0-9
M6	WINTHROP	L, 1-4
M8	CHARLESTON SOUTHERN	W, 10-1
M9	at Charleston Southern	L, 5-10
M10	CHARLESTON SOUTHERN	W, 4-3
M12	SOUTH CAROLINA	L, 9-10
M16	at Indiana State	L, 1-5
M16	at Indiana State	L, 2-4
M17	at Indiana State	L, 0-8
M19	GEORGIA SOUTHERN	6:30 p.m.
M20	at Winthrop	6 p.m.
M22	VMI*	6:30 p.m.
M23	VMI*	2 p.m.
M24	VMI*	1 p.m.
M26	at College of Charleston	6 p.m.
M29	at Furman*	6 p.m.
M30	at Furman*	4 p.m.
M31	at Furman*	1 p.m.
A3	at Charleston Southern	6 p.m.
A5	MERCER*	6:30 p.m.
A6	MERCER*	2 p.m.
A7	MERCER*	1 p.m.
A9	COLLEGE OF CHARLESTON	6:30 p.m.
A12	at Samford*	7 p.m.
A13	at Samford	3 p.m.
A14	at Samford	1 p.m.
A18	at South Florida	7 p.m.
A19	at South Florida	6:30 p.m.
A20	at South Florida	1 p.m.
A23	at Georgia Southern	6 p.m.
A26	at UNCG*	6 p.m.
A27	at UNCG*	3 p.m.
A28	at UNCG*	1 p.m.
A30	Georgia^	6 p.m.
M3	WOFFORD*	6 p.m.
M4	WOFFORD*	2 p.m.
M5	WOFFORD*	1 p.m.
M8	at Clemson	6 p.m.
M10	ETSU*	4 p.m.
M11	ETSU*	2 p.m.
M12	ETSU*	1 p.m.
M14	at College of Charleston	2 p.m.
M16	at Western Carolina*	5 p.m.
M17	at Western Carolina*	5 p.m.
M18	at Western Carolina*	2 p.m.

\* - Southern Conference game

^ North Augusta, S.C.

§-SoConChampionship(FluorField;Greenville,S.C.)



### ETSU

14-4, 0-0 SoCon

Date	Opponent	Time (ET)
F15	IONA	W, 4-3
F16	IONA	W, 14-3
F17	IONA	W, 14-4
F19	at Virginia Tech	L, 3-9
F22	WAGNER	W, 6-1
F23	WAGNER	W, 7-1
F24	WAGNER	W, 4-3
F26	at Clemson	L, 3-14
M1	LIU BROOKLYN	W, 10-3
M2	LIU BROOKLYN	W, 7-2
M3	LIU BROOKLYN	W, 7-2
M6	at Vanderbilt	L, 4-12
M8	at Georgia State	L, 5-6 (13)
M9	at Georgia State	W, 8-2
M10	at Georgia State	W, 5-1
M16	NJIT	W, 12-2
M16	NJIT	W, 8-1
M17	NJIT	W, 3-2
M19	TENNESSEE	6 p.m.
M22	WESTERN CAROLINA*	6 p.m.
M23	WESTERN CAROLINA*	2 p.m.
M24	WESTERN CAROLINA*	1 p.m.
M26	at Tennessee	6 p.m.
M27	UNC ASHEVILLE	6 p.m.
M29	GEORGETOWN	6 p.m.
M30	GEORGETOWN	2 p.m.
M31	GEORGETOWN	1 p.m.
A2	RADFORD	6 p.m.
A5	at VMI*	6 p.m.
A6	at VMI*	2 p.m.
A7	at VMI*	1 p.m.
A10	VIRGINIA TECH	6 p.m.
A12	at Furman*	6 p.m.
A13	at Furman*	4 p.m.
A14	at Furman*	1 p.m.
A16	APPALACHIAN STATE	6 p.m.
A18	WOFFORD*	6 p.m.
A19	WOFFORD*	6 p.m.
A20	WOFFORD*	2 p.m.
A26	at Mercer*	6 p.m.
A27	at Mercer*	2 p.m.
A28	at Mercer*	1 p.m.
A30	at UNC Asheville	6 p.m.
M3	UNCG*	6 p.m.
M4	UNCG*	2 p.m.
M5	UNCG*	1 p.m.
M10	at The Citadel*	4 p.m.
M11	at The Citadel*	2 p.m.
M12	at The Citadel*	1 p.m.
M14	GARDNER-WEBB	6 p.m.
M16	SAMFORD*	6 p.m.
M17	SAMFORD*	6 p.m.
M18	SAMFORD*	2 p.m.

\* - Southern Conference game

§-SoConChampionship(FluorField;Greenville,S.C.)



### Furman

5-12, 0-0 SoCon

Date	Opponent	Time (ET)
F15	MOREHEAD STATE	L, 3-6
F16	MOREHEAD STATE	L, 5-6
F17	MOREHEAD STATE	W, 16-11
F24	GARDNER-WEBB	L, 3-5
F25	GARDNER-WEBB	W, 7-2
F27	UNC ASHEVILLE	L, 3-4
M2	Wake Forest^	L, 7-13
M3	at Wake Forest	L, 1-5
M3	at Wake Forest	L, 2-11
M5	CLEMSON	L, 1-3
M9	APPALACHIAN STATE	W, 6-5
M10	at Appalachian State	L, 0-14
M11	OHIO STATE	W, 11-10
M13	at USC Upstate	W, 7-4
M15	at College of Charleston	L, 3-13
M16	at College of Charleston	L, 1-2
M17	at College of Charleston	L, 1-3
M19	SOUTH CAROLINA	6 p.m.
M22	at Samford*	6 p.m.
M23	at Samford*	2 p.m.
M24	at Samford*	1 p.m.
M26	at Winthrop	6 p.m.
M27	GARDNER-WEBB	6 p.m.
M29	THE CITADEL*	6 p.m.
M30	THE CITADEL*	4 p.m.
M31	THE CITADEL*	1 p.m.
A2	WINTHROP	6 p.m.
A3	at Georgia State	5 p.m.
A5	at UNCG*	6 p.m.
A6	at UNCG*	3 p.m.
A7	at UNCG*	1 p.m.
A10	at Clemson	6:30 p.m.
A12	ETSU*	6 p.m.
A13	ETSU*	4 p.m.
A14	ETSU*	1 p.m.
A16	at UNC Asheville	6 p.m.
A18	at Western Carolina*	6 p.m.
A19	at Western Carolina*	5 p.m.
A20	at Western Carolina*	2 p.m.
A24	GEORGIA STATE	6 p.m.
A26	KANSAS	6 p.m.
A27	KANSAS	4 p.m.
A28	KANSAS	12 p.m.
M3	VMI*	6 p.m.
M4	VMI*	4 p.m.
M5	VMI*	1 p.m.
M8	at South Carolina	7 p.m.
M10	at Wofford*	5 p.m.
M11	at Wofford	1 p.m.
M12	at Wofford	1 p.m.
M16	MERCER*	6 p.m.
M17	MERCER*	1 p.m.
M18	MERCER*	1 p.m.

\* - Southern Conference game

^ - Charlotte, N.C. (BB&T Stadium)

&- Greenville, S.C. (Flour Field)

§-SoConChampionship(FluorField;Greenville,S.C.)

## Team-by-team results



### Mercer 11-10, 0-0 SoCon

Date	Opponent	Time (ET)
F15	EVANSVILLE	W, 5-4
F16	EVANSVILLE	W, 7-6
F17	EVANSVILLE	L, 2-7
F20	at Florida A&M	W, 7-6
F22	ALABAMA A&M	W, 21-0
F23	ALABAMA A&M	W, 10-1
F24	ALABAMA A&M	W, 8-7
F26	FLORIDA A&M	W, 16-3
F27	FLORIDA A&M	W, 5-1
M1	at Florida State	L, 5-9
M2	at Florida State	L, 1-12
M3	at Florida State	L, 1-5
M5	GEORGIA STATE	W, 14-11
M6	at Georgia Southern	L, 3-13
M8	INDIANA STATE	L, 7-12
M9	INDIANA STATE	L, 3-7
M10	INDIANA STATE	L, 4-9
M12	SAVANNAH STATE	W, 8-1
M15	BINGHAMTON	L, 4-6
M16	BINGHAMTON	L, 7-10
M17	BINGHAMTON	W, 10-3
M19	GEORGIA TECH	6 p.m.
M22	UNCG*	6 p.m.
M23	UNCG*	2 p.m.
M24	UNCG*	1 p.m.
M26	GEORGIA SOUTHERN	6 p.m.
M29	at Wofford*	6 p.m.
M30	at Wofford*	4 p.m.
M31	at Wofford*	1 p.m.
A5	at The Citadel*	TBA
A6	at The Citadel*	TBA
A7	at The Citadel*	TBA
A10	at Georgia State	6 p.m.
A12	WESTERN CAROLINA*	6 p.m.
A13	WESTERN CAROLINA*	2 p.m.
A14	WESTERN CAROLINA*	1 p.m.
A16	KENNESAW STATE	6 p.m.
A18	at VMI*	TBA
A19	at VMI*	TBA
A20	at VMI*	TBA
A23	at Florida A&M	5 p.m.
A26	ETSU*	6 p.m.
A27	ETSU*	2 p.m.
A28	ETSU*	1 p.m.
M3	SAMFORD*	6 p.m.
M4	SAMFORD*	2 p.m.
M5	SAMFORD*	1 p.m.
M8	at Kennesaw State	6 p.m.
M10	at Belmont	TBA
M11	at Belmont	TBA
M12	at Belmont	TBA
M14	at Georgia Tech	6 p.m.
M16	at Furman*	6 p.m.
M17	at Furman*	1 p.m.
M18	at Furman*	1 p.m.

\* - Southern Conference game

§-SoConChampionship(FluorField;Greenville,S.C.)



### UNCG 13-5, 0-0 SoCon

Date	Opponent	Time (ET)
F15	QUINNIPIAC	W, 12-5
F16	QUINNIPIAC	W, 8-5
F17	QUINNIPIAC	Cancelled
F19	at High Point	W, 6-2
F23	VIRGINIA TECH	Cancelled
F24	VIRGINIA TECH	L, 4-12
F27	at Wake-Forest	L, 1-2
M2	PENN	W, 5-3
M2	PENN	W, 6-5 (13)
M4	PENN	W, 10-7
M5	at Winthrop	L, 3-6
M8	PRINCETON	W, 3-2
M9	PRINCETON	W, 5-3
M9	PRINCETON	W, 6-2
M10	PRINCETON	W, 5-3
M12	ELON	W, 4-3
M16	JACKSONVILLE	W, 5-4
M16	JACKSONVILLE	W, 13-3
M17	JACKSONVILLE	L, 4-8
M19	NORTH CAROLINA A&T	6 p.m.
M22	at Mercer	6 p.m.
M23	at Mercer	2 p.m.
M24	at Mercer	1 p.m.
M26	WAKE FOREST	6 p.m.
M29	WESTERN CAROLINA	6 p.m.
M30	WESTERN CAROLINA	3 p.m.
M31	WESTERN CAROLINA	1 p.m.
A2	HIGH POINT	6 p.m.
A5	FURMAN*	6 p.m.
A6	FURMAN*	3 p.m.
A7	FURMAN*	1 p.m.
A9	at North Carolina	6 p.m.
A12	GEORGE MASON	6 p.m.
A13	GEORGE MASON	3 p.m.
A14	GEORGE MASON	1 p.m.
A16	CAMPBELL	6 p.m.
A18	at Samford*	7 p.m.
A19	at Samford*	5 p.m.
A20	at Samford*	2 p.m.
A23	at Elon	6 p.m.
A26	THE CITADEL*	6 p.m.
A27	THE CITADEL*	3 p.m.
A28	THE CITADEL*	1 p.m.
A30	at Charlotte	6 p.m.
M3	at ETSU*	6 p.m.
M4	at ETSU*	2 p.m.
M5	at ETSU*	1 p.m.
M10	at VMI*	6 p.m.
M11	at VMI*	2 p.m.
M12	at VMI*	1 p.m.
M14	WITHROP	6 p.m.
M16	WOFFORD*	6 p.m.
M17	WOFFORD*	6 p.m.
M18	WOFFORD*	2 p.m.

\* - Southern Conference game

§-SoConChampionship(FluorField;Greenville,S.C.)



### Samford 14-5, 0-0 SoCon

Date	Opponent	Time (ET)
F15	at South Florida	L, 4-7
F16	at South Florida	W, 7-3
F17	at South Florida	L, 1-4
F19	NORTH ALABAMA	Postponed
F22	XAVIER	W, 10-7
F23	XAVIER	L, 1-7
F24	XAVIER	W, 10-9
F26	at Alabama State	W, 10-5
M1	at Georgia State	W, 13-2
M2	at Georgia State	W, 8-6
M3	at Georgia State	W, 2-1
M5	at Jacksonville State	W, 5-3
M6	ALABAMA STATE	W, 8-5
M8	KENNESAW STATE	W, 6-5
M9	KENNESAW STATE	W, 3-2
M10	KENNESAW STATE	W, 6-3
M12	at Vanderbilt	L, 6-11
M15	MAINE	W, 5-2
M16	MAINE	L, 4-6
M17	MAINE	W, 4-0
M20	MISSISSIPPI STATE	5 p.m.
M22	FURMAN*	5 p.m.
M23	FURMAN*	1 p.m.
M24	FURMAN*	12 p.m.
M26	at UAB	5:30 p.m.
M29	at VMI*	4 p.m.
M30	at VMI*	12 p.m.
M31	at VMI*	10 a.m.
A2	UAB	5 p.m.
A5	UT MARTIN	5 p.m.
A6	UT MARTIN	1 p.m.
A7	UT MARTIN	12 p.m.
A9	ALABAMA	5 p.m.
A12	THE CITADEL*	5 p.m.
A13	THE CITADEL*	1 p.m.
A14	THE CITADEL*	11 a.m.
A16	at Troy	5 p.m.
A18	UNCG*	5 p.m.
A19	UNCG*	3 p.m.
A20	UNCG*	12 p.m.
A23	ALABAMA A&M	5 p.m.
A24	TROY	5 p.m.
A26	at Wofford*	4 p.m.
A27	at Wofford*	1 p.m.
A28	at Wofford*	11 a.m.
A30	JACKSONVILLE STATE	5 p.m.
M3	at Mercer*	4 p.m.
M4	at Mercer*	12 p.m.
M5	at Mercer*	11 a.m.
M10	WESTERN CAROLINA*	5 p.m.
M11	WESTERN CAROLINA*	1 p.m.
M12	WESTERN CAROLINA	12 p.m.
M14	at Alabama	5 p.m.
M16	at ETSU*	4 p.m.
M17	at ETSU*	4 p.m.
M18	at ETSU*	11 a.m.

\* - Southern Conference game

§-SoConChampionship(FluorField;Greenville,S.C.)

## Team-by-team results



### VMI 4-15, 0-0 SoCon

Date	Opponent	Time (ET)
F15	Saint Joseph's&	W, 9-3
F16	at UNCW	L, 2-5
F17	Saint Joseph's&	W, 9-4
F17	at UNCW	L, 3-5
F19	at Virginia	L, 0-9
F23	at Clemson	L, 6-8
F23	at Clemson	L, 2-8
F24	at Clemson	L, 6-11
F26	at James Madison	L, 4-5
F27	at Old Dominion	L, 0-5
M2	NORTHERN KENTUCKY	L, 6-7
M3	NORTHERN KENTUCKY	Cancelled
M6	VCU	Rescheduled
M9	BINGHAMTON	L, 2-4
M9	BINGHAMTON	L, 4-8
M10	BINGHAMTON	L, 1-2
M13	MARSHALL	L, 6-7
M15	LEHIGH	L, 0-1 (11)
M16	LEHIGH	L, 13-15 (10)
M17	LEHIGH	W, 11-1
M19	RADFORD	6 p.m.
M22	at The Citadel*	6 p.m.
M23	at The Citadel*	2 p.m.
M24	at The Citadel*	1 p.m.
M26	at VCU	6:30 p.m.
M27	JAMES MADISON	6 p.m.
M29	SAMFORD*	6 p.m.
M30	SAMFORD*	2 p.m.
M31	SAMFORD*	12 p.m.
A2	VIRGINIA TECH	6 p.m.
A5	ETSU*	6 p.m.
A6	ETSU*	2 p.m.
A7	ETSU*	1 p.m.
A9	at Radford	6 p.m.
A12	at Wofford*	6 p.m.
A13	at Wofford*	3 p.m.
A14	at Wofford*	1 p.m.
A16	RICHMOND	6 p.m.
A18	MERCER*	6 p.m.
A19	MERCER*	4 p.m.
A20	MERCER*	1 p.m.
A23	at Virginia Tech	6 p.m.
A26	at Western Carolina*	5 p.m.
A27	at Western Carolina*	2 p.m.
A28	at Western Carolina*	1 p.m.
A30	at Longwood	5 p.m.
M3	at Furman*	6 p.m.
M4	at Furman*	4 p.m.
M5	at Furman*	1 p.m.
M10	UNCG*	6 p.m.
M11	UNCG*	2 p.m.
M12	UNCG*	1 p.m.
M14	OLD DOMINION	6 p.m.
M15	EASTERN ILLINOIS	6 p.m.
M16	EASTERN ILLINOIS	4 p.m.
M17	EASTERN ILLINOIS	1 p.m.

& - Wilmington, N.C.

\* - Southern Conference game

§-SoConChampionship(FluorField;Greenville,S.C.)



### Western Carolina 10-7, 0-0 SoCon

Date	Opponent	Time (ET)
F15	OAKLAND	W, 21-9
F16	OAKLAND	W, 9-8
F17	OAKLAND	W, 12-2
F24	ST. JOHN'S	L, 2-5
F24	ST. JOHN'S	W, 13-4
F26	INDIANA STATE	L, 4-8
F27	INDIANA STATE	W, 10-9
M1	Wright State+	L, 3-5
M2	Utah+	L, 0-14
M3	at ECU	L, 6-12
M6	at UNC Asheville	W, 16-4
M8	Michigan State%	Postponed
M9	Michigan State%	W, 6-4 (10)
M10	Ohio State%	W, 8-5
M13	NOTRE DAME	W, 16-9
M15	ELON	W, 5-2
M16	ELON	L, 11-12 (10)
M17	ELON	L, 2-6
M20	GARNDER-WEBB	5 p.m.
M22	at ETSU*	5:30 p.m.
M23	at ETSU*	2 p.m.
M24	at ETSU*	1 p.m.
M29	at UNCG*	6 p.m.
M30	at UNCG*	3 p.m.
M31	at UNCG*	1 p.m.
A3	at Marshall	3 p.m.
A5	WOFFORD*	2 p.m.
A6	WOFFORD*	2 p.m.
A7	WOFFORD*	1 p.m.
A9	APPALACHIAN STATE	5 p.m.
A10	at Gardner-Webb	6 p.m.
A12	at Mercer*	6 p.m.
A13	at Mercer*	2 p.m.
A14	at Mercer*	1 p.m.
A18	FURMAN*	6 p.m.
A19	FURMAN*	5 p.m.
A20	FURMAN*	2 p.m.
A24	UNC ASHEVILLE	6 p.m.
A26	VMI*	5 p.m.
A27	VMI*	2 p.m.
A28	VMI*	1 p.m.
A30	at Appalachian State	5 p.m.
M3	at Georgia Tech	7 p.m.
M4	at Georgia Tech	4 p.m.
M5	at Georgia Tech	1 p.m.
M10	at Samford*	7 p.m.
M11	at Samford*	3 p.m.
M12	at Samford*	2 p.m.
M14	Eastern Kentucky@	6:30 p.m.
M16	THE CITADEL*	5 p.m.
M17	THE CITADEL*	5 p.m.
M18	THE CITADEL*	2 p.m.

\* - Southern Conference game

+ - Keith LeClair Classic (Greenville, N.C.)

% - First Pitch Invitational (Greenville, S.C.)

@ - Prasco Park (Mason, Ohio)

§-SoConChampionship(FluorField;Greenville,S.C.)



### Wofford 14-7, 0-0 SoCon

Date	Opponent	Time (ET)
F15	OHIO UNIVERSITY	W, 2-0
F16	OHIO UNIVERSITY	L, 4-6
F17	OHIO UNIVERSITY	W, 5-2
F22	BUCKNELL	Cancelled
F23	VCU	L, 3-13
F24	RADFORD	W, 10-9 (10)
F26	UNC ASHEVILLE	W, 14-2
F27	CHARLESTON SOUTHERN	L, 3-4 (11)
M1	HARVARD	W, 6-5
M2	HARVARD	W, 8-0 (7)
M2	HARVARD	L, 4-5
M3	HARVARD	L, 1-6
M5	USC UPSTATE	W, 3-1
M6	PRESBYTERIAN	L, 4-5
M9	GARDNER-WEBB	W, 14-5
M9	at Gardner-Webb	W, 6-2
M10	GARNDER-WEBB	W, 7-5
M12	OHIO STATE	W, 8-6
M13	BRYANT UNIVERSITY	L, 11-12
M15	LAFAYETTE COLLEGE	W, 12-1
M16	LAFAYETTE COLLEGE	W, 13-3
M17	LAFAYETTE COLLEGE	W, 7-6
M19	UNIVERSITYOFMARYLANDEASTERNSHORE	6 p.m.
M20	UNIVERSITYOFMARYLANDEASTERNSHORE	5 p.m.
M22	at Florida A&M	5 p.m.
M23	at Florida A&M	2 p.m.
M24	at Florida A&M	12:30 p.m.
M27	at Presbyterian	3 p.m.
M29	MERCER*	6 p.m.
M30	MERCER*	3 p.m.
M31	MERCER*	1 p.m.
A2	at Wright State	3 p.m.
A5	at Western Carolina*	6 p.m.
A6	at Western Carolina*	2 p.m.
A7	at Western Carolina*	1 p.m.
A10	PRESBYTERIAN	6 p.m.
A12	VMI*	6 p.m.
A13	VMI*	3 p.m.
A14	VMI*	1 p.m.
A16	at Winthrop	6 p.m.
A18	at ETSU*	6 p.m.
A19	at ETSU*	2 p.m.
A20	at ETSU*	1 p.m.
A23	at UNC Asheville	6 p.m.
A26	SAMFORD*	6 p.m.
A27	SAMFORD*	3 p.m.
A28	SAMFORD*	1 p.m.
M3	at The Citadel*	6:30 p.m.
M4	at The Citadel*	6 p.m.
M5	at The Citadel*	1 p.m.
M8	at USC Upstate	6 p.m.
M10	FURMAN*	5 p.m.
M11	FURMAN*	1 p.m.
M12	FURMAN*	1 p.m.
M16	at UNCG*	6 p.m.
M17	at UNCG*	6 p.m.
M18	at UNCG*	2 p.m.

\* - Southern Conference game

&- Lexington, S.C.

§-SoConChampionship(FluorField;Greenville,S.C.)



## Baseball America Top 25

(WEEK 5)

TEAM	W-L	PREV.
1. UCLA	14-4	2
2. Mississippi State	18-2	6
3. Stanford	12-3	4
4. Louisville	16-4	7
5. Georgia	18-2	8
6. NC State	19-1	20
7. Oregon State	14-3-1	3
8. Vanderbilt	15-5	1
9. Texas	15-7	12
10. LSU	15-5	13
11. Arkansas	17-2	14
12. Auburn	18-2	18
13. Texas A&M	17-5	19
14. Florida	15-7	5
15. Arizona State	19-0	25
16. North Carolina	16-5	15
17. Coastal Carolina	16-4-1	16
18. Ole Miss	14-6	9
19. Texas Tech	12-5	11
20. East Carolina	15-6	17
21. Florida State	14-4	10
22. TCU	12-6	21
23. UC Irvine	12-4	NR
24. Michigan	13-4	NR
25. Oklahoma	16-4	NR

## Collegiate Baseball Top 30

(WEEK 5)

TEAM	W-L	POINTS	PREV.
1. N.C. State	19-1	494	2
2. Mississippi State	18-2	493	5
3. UCLA	14-4	491	6
4. Oregon St.	14-3-1	490	3
5. Arizona St.	19-0	488	9
6. Vanderbilt	15-5	486	4
7. Louisiana St.	15-5	484	10
8. Stanford	12-3	480	8
9. Georgia	18-2	478	13
10. Arkansas	17-2	476	17
11. Coastal Carolina	16-4-1	474	11
12. Auburn	18-2	471	23
13. Florida	15-7	468	16
14. Florida St.	14-4	466	1
15. Louisville	16-4	463	15
16. North Carolina	16-5	461	14
17. Texas	15-7	458	20
18. Texas Tech	12-5	457	7
19. Texas A&M	17-5	456	21
20. Clemson	14-5	455	12
21. East Carolina	15-6	453	30
22. U.C. Santa Barbara	14-3	451	25
23. Illinois	13-3	449	29
24. U.C. Irvine	12-4	446	-
25. Oklahoma	16-4	444	27
26. Baylor	13-5	442	24
27. San Diego	14-6	439	24
28. Mississippi	14-6	437	19
29. Miami, Fla.	15-5	434	28
30. Michigan	13-4	431	-

## NCBWA Poll

(WEEK 4)

TEAM	W-L	PREV.
1. Vanderbilt	13-3	1
2. Oregon State	12-1-1	2
3. Stanford	12-3	5
4. UCLA	11-3	3
5. Mississippi State	15-1	7
6. Florida	13-5	8
7. Florida State	13-1	6
8. Texas Tech	11-3	11
9. Georgia	14-2	10
10. LSU	11-4	13
11. Louisville	11-4	14
12. Mississippi	12-3	9
13. Arkansas	12-2	15
14. North Carolina	12-4	4
15. Texas	12-6	12
16. Coastal Carolina	13-3-1	18
17. Auburn	14-2	20
18. NC State	15-0	24
19. East Carolina	12-5	19
20. Arizona State	15-0	24
21. Clemson	12-3	23
22. Texas A&M	15-3	26
23. Tennessee	15-1	22
24. South Carolina	13-3	27
25. TCU	9-5	16
26. Michigan	9-4	28
27. UC Irvine	9-4	29
28. Baylor	10-4	21
29. Miami (Fla.)	12-3	30
30. Oregon	10-4	RV

**Others receiving votes** (listed alphabetically): Alabama (15-2), Arizona (10-6), Dallas Baptist (12-3), Duke (11-5), Illinois (10-3), Indiana State (12-1), Louisiana Tech (10-5), Marshall (9-5), Oklahoma State (9-5), Old Dominion (11-3), Portland (13-4), San Diego (12-4), Southern (9-6), Southern Miss. (8-5), UC Santa Barbara (11-2), Washington (9-4), William & Mary (12-1).

## NCAA Top 25

(WEEK 4)

TEAM	W-L	LW
1. Oregon State	12-1-1	2
2. Vanderbilt	13-3	1
3. UCLA	11-3	4
4. Stanford	12-3	5
5. Mississippi State	15-1	8
6. Florida State	13-1	7
7. Florida	13-5	6
8. Ole Miss	12-3	13
9. Texas Tech	11-3	12
10. Arkansas	12-2	10
11. Georgia	14-2	15
12. NC State	15-0	17
13. LSU	11-4	9
14. Louisville	11-4	14
15. North Carolina	12-4	3
16. Coastal Carolina	13-3-1	16
17. Auburn	14-2	18
18. Texas	12-6	11
19. Arizona State	15-0	23
20. Clemson	12-3	NR
21. Tennessee	15-1	21
22. Texas A&M	15-3	22
23. South Carolina	13-3	24
24. East Carolina	12-5	25
25. Michigan	9-4	19

## D1 Baseball Top 25

(WEEK 5)

TEAM	W-L	LW
1. UCLA	14-4	2
2. Mississippi State	18-2	6
3. Stanford	12-3	4
4. Louisville	16-4	7
5. Georgia	18-2	8
6. NC State	19-1	20
7. Oregon State	14-3-1	3
8. Vanderbilt	15-5	1
9. Texas	15-7	12
10. LSU	15-5	13
11. Arkansas	17-2	14
12. Auburn	18-2	18
13. Texas A&M	17-5	19
14. Florida	15-7	5
15. Arizona State	19-0	25
16. North Carolina	16-5	15
17. Coastal Carolina	16-4-1	16
18. Ole Miss	14-6	9
19. Texas Tech	12-5	11
20. East Carolina	15-6	17
21. Florida State	14-4	10
22. TCU	12-6	21
23. UC Irvine	12-4	NR
24. Michigan	13-4	NR
25. Oklahoma	16-4	NR

# SoCon in the NCAA statistics rankings (top 50) – through March 18

TEAM			Stolen bases			Slugging percentage		
<b>Batting average</b>			<b>Team</b>	<b>Rank</b>	<b>SB</b>	<b>Player, team</b>	<b>Rank</b>	<b>PCT</b>
<b>Team</b>	<b>Rank</b>	<b>Avg.</b>	Wofford	1	64	Justice Bigbie, WCU	37	0.708
Western Carolina	10	0.314	UNCG	35	33			
Wofford	23	0.305	The Citadel	39	31			
ETSU	32	0.297						
Mercer	40	0.294						
<b>Double Plays</b>			<b>Stolen bases per game</b>			<b>Hit batters</b>		
<b>Team</b>	<b>Rank</b>	<b>DP</b>	<b>Team</b>	<b>Rank</b>	<b>SB/G</b>	<b>Player, team</b>	<b>Rank</b>	<b>HB</b>
Western Carolina	2	25	Wofford	2	3.05	Austin Higginbotham, Wofford	20	7
Mercer	40	16	UNCG	34	1.83	Ryan Mitschele, WCU	40	6
<b>Double plays per game</b>			<b>Strikeout-to-walk ratio</b>			Derek Tremblay, VMI	40	6
<b>Team</b>	<b>Rank</b>	<b>2B</b>	<b>Team</b>	<b>Rank</b>	<b>K/BB</b>	Chase Walter, WCU	40	6
Western Carolina	2	1.47	Wofford	12	3.37			
<b>Doubles</b>			ETSU	25	2.91			
<b>Team</b>	<b>Rank</b>	<b>2B</b>	Mercer	39	2.68			
Western Carolina	19	43				<b>Hit by pitch</b>		
ETSU	21	42	<b>Triples</b>			<b>Player, team</b>	<b>Rank</b>	<b>HBP</b>
Wofford	44	38	<b>Team</b>	<b>Rank</b>	<b>3B</b>	Ryan Smoot, VMI	2	12
Mercer	44	38	Western Carolina	42	6	Taylor Garris, Samford	14	9
<b>Doubles per game</b>			<b>Triples per game</b>			Luke Robinson, WCU	40	7
<b>Team</b>	<b>Rank</b>	<b>2B/G</b>	<b>Team</b>	<b>Rank</b>	<b>PG</b>			
Western Carolina	9	2.53	Western Carolina	50	0.35			
ETSU	15	2.33	<b>Strikeouts per nine innings</b>			<b>Hit by pitch per game</b>		
<b>Fielding percentage</b>			<b>Team</b>	<b>Rank</b>	<b>K/9</b>	<b>Player, team</b>	<b>Rank</b>	<b>HBP/G</b>
<b>Team</b>	<b>Rank</b>	<b>PG</b>	WHIP			Ryan Smoot, VMI	1	0.80
ETSU	22	0.979	ETSU	28	1.22	Taylor Garris, Samford	26	0.47
<b>Hit batters</b>			<b>Won-lost percentage</b>			Luke Robinson, WCU	49	0.41
<b>Team</b>	<b>Rank</b>	<b>HBP</b>	<b>Team</b>	<b>Rank</b>	<b>Pct.</b>			
Western Carolina	14	32	ETSU	20	0.778	<b>Hits</b>		
Wofford	28	30	Samford	31	0.737	<b>Player, team</b>	<b>Rank</b>	<b>Hits</b>
<b>Hit by pitch</b>			UNCG	37	0.722	Lawson Hill, Wofford	2	37
<b>Team</b>	<b>Rank</b>	<b>HBP</b>	<b>Walks allowed per nine innings</b>			RJ Yeager, Mercer	38	30
Western Carolina	26	32	<b>Team</b>	<b>Rank</b>	<b>BB/9</b>	Brooks Carlson, Samford	48	29
Wofford	30	31						
VMI	41	29	<b>INDIVIDUAL</b>			<b>Hits allowed per nine innings</b>		
<b>Hits</b>			<b>Base on Balls</b>			<b>Player, team</b>	<b>Rank</b>	<b>PG</b>
<b>Team</b>	<b>Rank</b>	<b>Hits</b>	<b>Player, team</b>	<b>Rank</b>	<b>BB</b>	Rob Hughes, Furman	11	3.86
Mercer	11	218	Hudson Byorick, Wofford	32	18	Hayes Heinecke, Wofford	38	4.78
Wofford	18	209	<b>Base on balls per game</b>					
<b>Home runs</b>			<b>Player, team</b>	<b>Rank</b>	<b>PG</b>	<b>Hits per game</b>		
<b>Team</b>	<b>Rank</b>	<b>HR</b>	Ryan Smoot, VMI	37	1.00	<b>Player, team</b>	<b>Rank</b>	<b>PG</b>
Mercer	6	27	<b>Batting Average</b>			Lawson Hill, Wofford	10	1.76
Western Carolina	43	18	<b>Player, team</b>	<b>Rank</b>	<b>Avg.</b>	Will Prater, WCU	29	1.65
<b>Home runs per game</b>			Lawson Hill, Wofford	8	0.457	Justice Bigbie, WCU	47	1.59
<b>Team</b>	<b>Rank</b>	<b>HR/G</b>	Justice Bigbie, WCU	35	0.415			
Mercer	11	1.29	<b>Complete games</b>			<b>Home runs</b>		
Western Carolina	31	1.06	<b>Player, team</b>	<b>Rank</b>	<b>CG</b>	<b>Player, team</b>	<b>Rank</b>	<b>HR</b>
<b>On-base percentage</b>			Shane Connolly, The Citadel	8	1	Kel Johnson, Mercer	4	10
<b>Team</b>	<b>Rank</b>	<b>OBP</b>	Hayes Heinecke, Wofford	8	1	RJ Yeager, Mercer	21	6
Wofford	20	0.409	Zak Kent, VMI	8	1	Justice Bigbie, WCU	46	5
Western Carolina	25	0.406	Jordan Merritt, The Citadel	8	1	Luke Robinson, WCU	46	5
ETSU	33	0.403	<b>Doubles</b>			<b>Home runs per game</b>		
<b>Runs</b>			<b>Player, team</b>	<b>Rank</b>	<b>2B</b>	<b>Player, team</b>	<b>Rank</b>	<b>PG</b>
<b>Team</b>	<b>Rank</b>	<b>Runs</b>	Daylan Nanny, WCU	13	9	Kel Johnson, Mercer	5	0.50
Mercer	26	148	Preston Moore, Samford	41	8			
Wofford	30	145	<b>Doubles per game</b>			<b>Pitching appearances</b>		
Western Carolina	31	144	<b>Player, team</b>	<b>Rank</b>	<b>2B/G</b>	<b>Player, team</b>	<b>Rank</b>	<b>APP</b>
<b>Sacrifice bunts</b>			Daylan Nanny, WCU	29	0.53	Alex Bialakis, The Citadel	5	12
<b>Team</b>	<b>Rank</b>	<b>SAC</b>	<b>ERA</b>			Will Pillsbury, The Citadel	15	11
UNCG	14	16	<b>Player, team</b>	<b>Rank</b>	<b>ERA</b>	Connor Radcliff, Samford	15	11
Wofford	26	14	Rob Hughes, Furman	7	0.43	Nick Spear, Mercer	15	11
<b>Sacrifice flies</b>			<b>Games Started</b>			<b>Runs</b>		
<b>Team</b>	<b>Rank</b>	<b>SF</b>	<b>Player, team</b>	<b>Rank</b>	<b>GS</b>	<b>Player, team</b>	<b>Rank</b>	<b>Runs</b>
Wofford	29	12	Cameron Bloodworth, Wofford	18	5	Kyle Dockus, Mercer	19	24
UNCG	39	11	Shane Connolly, The Citadel	18	5	Andrew Orzel, Wofford	29	23
<b>Scoring</b>			David Dunlavey, Furman	18	5	Daylan Nanny, WCU	44	22
<b>Team</b>	<b>Rank</b>	<b>R/G</b>	Tanner Hall, Mercer	18	5	<b>RBI</b>		
Western Carolina	11	8.5	Hayes Heinecke, Wofford	18	5	<b>Player, team</b>	<b>Rank</b>	<b>RBI</b>
Mercer	49	7.0	Zach Hester, Samford	18	5	Kel Johnson, Mercer	11	27
<b>Shutouts</b>			Austin Higginbotham, Wofford	18	5	<b>Runs batted in per game</b>		
<b>Team</b>	<b>Rank</b>	<b>SHO</b>	Micah Kaczor, ETSU	18	5	<b>Player, team</b>	<b>Rank</b>	<b>PG</b>
Wofford	30	2	Zak Kent, VMI	18	5	Kel Johnson, Mercer	23	1.35
<b>Slugging percentage</b>			Landon Knack, ETSU	18	5	Justice Bigbie, WCU	50	1.24
<b>Team</b>	<b>Rank</b>	<b>SLG</b>	Jesse McCord, Samford	18	5	<b>Runs per game</b>		
Western Carolina	7	0.498	Jacob Menders, VMI	18	5	<b>Player, team</b>	<b>Rank</b>	<b>PG</b>
ETSU	25	0.464	Jordan Merritt, The Citadel	18	5	Daylan Nanny, WCU	27	1.29
Mercer	27	0.460	Taylor Purus, WCU	18	5	Justice Bigbie, WCU	35	1.24
			Phillip Sanderson, UNCG	18	5	<b>Sacrifice bunts</b>		
			Dylan Spence, The Citadel	18	5	<b>Player, team</b>	<b>Rank</b>	<b>SAC</b>
			Samuel Strickland, Samford	18	5	Austin Embler, UNCG	28	4
						Matthew Koehler, WCU	28	4
						<b>Sacrifice bunts per game</b>		
						<b>Player, team</b>	<b>Rank</b>	<b>PG</b>
						Matthew Koehler, WCU	41	0.24
						<b>Sacrifice flies</b>		
						<b>Player, team</b>	<b>Rank</b>	<b>SF</b>
						David Flores, UNCG	28	3
						Greg Hardison, UNCG	28	3
						Lawson Hill, Wofford	28	3
						Will Knight, VMI	28	3
						<b>Saves</b>		
						<b>Player, team</b>	<b>Rank</b>	<b>Saves</b>
						Stephen Jones, Samford	1	7
						Reece Maniscalco, Wofford	38	4

**2019 Southern Conference Baseball  
SoCon Batting Leaders (as of Mar 18, 2019)  
(All games)**

Hitting minimums - 1 Games 50% of Games 2.0 AB/Game 2.5 TPA/Game  
Pitching minimums - 1 Games 1.0 IP/Game

<b>Batting avg</b>		<b>Slugging pct</b>		<b>On base pct</b>	
1. Western Carolina	.314	1. Western Carolina	.498	1. Wofford	.409
2. Wofford	.305	2. ETSU	.464	2. Western Carolina	.406
3. ETSU	.297	3. Mercer	.460	3. ETSU	.403
4. Mercer	.294	4. Wofford	.411	4. UNCG	.385
5. UNCG	.288	5. Samford	.405	5. Mercer	.379
6. Samford	.268	6. UNCG	.380	6. Samford	.374
7. Furman	.237	7. Furman	.355	7. VMI	.342
8. The Citadel	.233	8. VMI	.316	8. Furman	.317
9. VMI	.226	9. The Citadel	.299	9. The Citadel	.302
<b>Runs scored</b>		<b>Hits</b>		<b>Runs batted in</b>	
1. Mercer	148	1. Mercer	218	1. Mercer	140
2. Wofford	145	2. Wofford	209	2. Western Carolina	125
3. Western Carolina	144	3. Western Carolina	185	3. Wofford	123
4. ETSU	124	4. ETSU	179	4. ETSU	114
5. Samford	113	5. Samford	168	5. Samford	102
6. UNCG	101	UNCG	168	6. UNCG	83
7. VMI	92	7. VMI	144	VMI	83
8. Furman	77	8. The Citadel	139	8. Furman	73
9. The Citadel	74	9. Furman	137	9. The Citadel	67
<b>Doubles</b>		<b>Triples</b>		<b>Home runs</b>	
1. Western Carolina	43	1. Western Carolina	6	1. Mercer	27
2. ETSU	42	2. ETSU	4	2. Western Carolina	18
3. Mercer	38	3. Wofford	3	3. ETSU	17
4. Wofford	37	VMI	3	4. Samford	16
5. Samford	36	The Citadel	3	5. Furman	13
6. VMI	27	UNCG	3	6. Wofford	10
7. Furman	25	7. Mercer	2	7. UNCG	9
8. The Citadel	21	Furman	2	8. VMI	8
UNCG	21	9. Samford	1	9. The Citadel	4
<b>Total bases</b>		<b>Total plate appearances</b>		<b>At bats</b>	
1. Mercer	341	1. Mercer	869	1. Mercer	742
2. Western Carolina	294	2. Wofford	841	2. Wofford	686
3. Wofford	282	3. VMI	768	3. VMI	637
4. ETSU	280	4. Samford	752	4. Samford	627
5. Samford	254	5. ETSU	729	5. ETSU	603
6. UNCG	222	6. UNCG	710	6. The Citadel	596
7. Furman	205	7. Western Carolina	704	7. Western Carolina	590
8. VMI	201	8. The Citadel	675	8. UNCG	584
9. The Citadel	178	9. Furman	652	9. Furman	578
<b>Walks</b>		<b>Hit by pitch</b>		<b>Strikeouts</b>	
1. Wofford	98	1. Western Carolina	32	1. VMI	192
2. ETSU	89	2. Wofford	31	2. Furman	161
3. VMI	86	3. VMI	29	3. Samford	153
Mercer	86	4. Samford	27	4. Mercer	149
5. Samford	84	5. ETSU	24	5. The Citadel	140
6. UNCG	78	6. UNCG	21	6. Wofford	129
7. Western Carolina	66	Mercer	21	7. ETSU	120
8. Furman	64	8. The Citadel	10	8. UNCG	114
9. The Citadel	51	9. Furman	5	Western Carolina	114
<b>Sac bunts</b>		<b>Sac flies</b>		<b>Stolen bases</b>	
1. UNCG	16	1. Wofford	12	1. Wofford	64
2. Wofford	14	2. UNCG	11	2. UNCG	32
3. Mercer	12	3. Western Carolina	9	3. The Citadel	31
The Citadel	12	4. Mercer	8	4. Mercer	28
5. VMI	10	ETSU	8	5. ETSU	26
6. Samford	7	6. Samford	7	6. Western Carolina	18
Western Carolina	7	7. The Citadel	6	7. VMI	17
8. ETSU	5	VMI	6	8. Samford	14
9. Furman	2	9. Furman	3	9. Furman	8

**Caught stealing**

1. The Citadel	12
2. Western Carolina	10
Wofford	10
UNCG	10
5. Mercer	6
6. Samford	5
ETSU	5
8. VMI	4
9. Furman	3

**Steal attempts**

1. Wofford	74
2. The Citadel	43
3. UNCG	42
4. Mercer	34
5. ETSU	31
6. Western Carolina	28
7. VMI	21
8. Samford	19
9. Furman	11

**Grounded into DP**

1. Samford	17
2. Furman	11
ETSU	11
Wofford	11
5. The Citadel	10
Western Carolina	10
VMI	10
UNCG	10
9. Mercer	3

**2019 Southern Conference Baseball  
SoCon Pitching Leaders (as of Mar 18, 2019)  
(All games)**

Hitting minimums - 1 Games 50% of Games 2.0 AB/Game 2.5 TPA/Game  
Pitching minimums - 1 Games 1.0 IP/Game

<b>Earned run avg</b>		<b>Opposing bat avg</b>		<b>Innings pitched</b>	
1. ETSU	3.63	1. ETSU	.232	1. Wofford	188.1
2. UNCG	3.68	2. VMI	.240	2. Mercer	185.0
3. Wofford	3.73	3. UNCG	.241	3. Samford	168.0
4. The Citadel	3.80	4. The Citadel	.243	4. VMI	166.1
5. Samford	3.96	5. Wofford	.262	5. The Citadel	166.0
6. VMI	5.36	6. Western Carolina	.269	6. UNCG	161.1
7. Mercer	5.69	7. Samford	.272	7. ETSU	158.2
8. Western Carolina	5.96	8. Furman	.274	8. Western Carolina	151.0
9. Furman	6.18	9. Mercer	.285	9. Furman	147.0
<b>Batters struck out</b>		<b>Batters SO out looking</b>		<b>Wins</b>	
1. Mercer	201	1. UNCG	65	1. ETSU	14
2. Wofford	172	2. Samford	62	Samford	14
3. UNCG	165	3. Wofford	53	Wofford	14
4. Samford	163	4. ETSU	47	4. UNCG	13
ETSU	163	Furman	47	5. Mercer	11
6. VMI	154	6. Western Carolina	46	6. Western Carolina	10
7. The Citadel	125	7. Mercer	45	7. The Citadel	6
8. Western Carolina	124	8. VMI	40	8. Furman	5
Furman	124	9. The Citadel	37	9. VMI	4
<b>Losses</b>		<b>Saves</b>		<b>Runners picked off</b>	
1. VMI	15	1. Samford	9	1. UNCG	7
2. The Citadel	12	2. Wofford	7	2. Furman	4
3. Furman	11	3. ETSU	5	Mercer	4
4. Mercer	10	4. Mercer	4	The Citadel	4
5. Western Carolina	7	UNCG	4	Wofford	4
Wofford	7	6. Furman	2	6. Western Carolina	2
7. Samford	5	Western Carolina	2	VMI	2
UNCG	5	8. The Citadel	1	8. ETSU	1
9. ETSU	4				
<b>Sac bunts allowed</b>		<b>Sac flies allowed</b>		<b>Hits allowed</b>	
1. VMI	16	1. Furman	11	1. ETSU	137
2. Western Carolina	14	2. Western Carolina	9	2. UNCG	149
3. The Citadel	12	3. The Citadel	8	3. VMI	152
4. Wofford	9	Samford	8	4. Western Carolina	154
5. Furman	8	Mercer	8	5. The Citadel	158
Samford	8	6. Wofford	6	6. Furman	159
7. UNCG	6	ETSU	6	7. Samford	174
Mercer	6	8. UNCG	4	8. Wofford	197
9. ETSU	5	9. VMI	2	9. Mercer	211
<b>Runs allowed</b>		<b>Earned runs allowed</b>		<b>Walks allowed</b>	
1. ETSU	71	1. ETSU	64	1. Wofford	51
2. UNCG	74	2. UNCG	66	2. ETSU	56
3. Samford	86	3. The Citadel	70	3. Furman	63
4. Wofford	98	4. Samford	74	4. Samford	65
The Citadel	98	5. Wofford	78	5. VMI	73
6. VMI	111	6. VMI	99	6. Mercer	75
7. Furman	117	7. Western Carolina	100	7. The Citadel	78
8. Western Carolina	118	8. Furman	101	8. UNCG	84
9. Mercer	133	9. Mercer	117	9. Western Carolina	88
<b>Doubles allowed</b>		<b>Triples allowed</b>		<b>Home runs allowed</b>	
1. Western Carolina	26	1. The Citadel	2	1. ETSU	7
2. ETSU	27	Wofford	2	2. UNCG	8
3. Samford	31	Furman	2	The Citadel	8
Mercer	31	Mercer	2	4. Wofford	12
The Citadel	31	5. VMI	3	5. Western Carolina	14
6. Furman	34	6. UNCG	4	6. Samford	15
UNCG	34	Samford	4	7. VMI	16
8. Wofford	40	8. Western Carolina	6	8. Furman	19
9. VMI	41	ETSU	6	9. Mercer	25

**Wild pitches**

1. Western Carolina	36
2. Wofford	24
3. The Citadel	20
4. Mercer	19
5. Furman	15
6. UNCG	13
7. Samford	12
VMI	12
9. ETSU	5

**Intentional BB allowed**

1. Western Carolina	3
2. Samford	5
3. The Citadel	7
4. ETSU	2
5. VMI	1
6. Mercer	3
7. Wofford	1

**Balks**

1. Western Carolina	2
ETSU	2
Furman	2
4. The Citadel	1
VMI	1
UNCG	1
Samford	1

**Hit batters**

1. Western Carolina	32
2. Wofford	30
3. VMI	22
4. Mercer	20
5. The Citadel	19
6. Samford	15
Furman	15
8. UNCG	14
9. ETSU	13

**2019 Southern Conference Baseball  
SoCon Fielding Leaders (as of Mar 18, 2019)  
(All games)**

Hitting minimums - 1 Games 50% of Games  
Pitching minimums - 1 Games 1.0 IP/Game

<b>Fielding pct</b>		<b>Chances</b>		<b>Putouts</b>	
1. ETSU	.979	1. Wofford	776	1. Wofford	565
2. UNCG	.971	2. Mercer	773	2. Mercer	555
3. Samford	.969	3. The Citadel	726	3. Samford	504
4. Mercer	.969	4. Samford	721	4. VMI	499
5. VMI	.968	5. VMI	709	5. The Citadel	498
6. Wofford	.965	6. UNCG	693	6. UNCG	484
7. Furman	.964	7. Western Carolina	673	7. ETSU	476
8. Western Carolina	.954	8. ETSU	658	8. Western Carolina	453
9. The Citadel	.941	9. Furman	619	9. Furman	441
<b>Assists</b>		<b>Errors</b>		<b>Fielding double plays</b>	
1. Samford	195	1. The Citadel	43	1. Western Carolina	25
2. Mercer	194	2. Western Carolina	31	2. Mercer	16
3. UNCG	189	3. Wofford	27	3. The Citadel	14
Western Carolina	189	4. Mercer	24	Samford	14
5. VMI	187	5. VMI	23	5. UNCG	9
6. The Citadel	185	6. Furman	22	ETSU	9
7. Wofford	184	Samford	22	VMI	9
8. ETSU	168	8. UNCG	20	8. Wofford	8
9. Furman	156	9. ETSU	14	9. Furman	7
<b>Stolen bases against</b>		<b>Caught stealing by</b>		<b>Steal attempts against</b>	
1. VMI	23	1. Samford	12	1. VMI	30
2. Furman	21	2. ETSU	9	2. Western Carolina	27
3. Western Carolina	20	3. Western Carolina	7	3. Furman	25
4. The Citadel	19	VMI	7	4. The Citadel	24
5. Mercer	17	5. Wofford	6	5. Samford	22
6. UNCG	14	UNCG	6	6. Mercer	21
7. Wofford	12	7. The Citadel	5	7. UNCG	20
8. Samford	10	8. Furman	4	8. Wofford	18
9. ETSU	3	Mercer	4	9. ETSU	12
<b>Passed balls</b>		<b>Catchers interference</b>			
1. Mercer	8	1. The Citadel	1		
2. The Citadel	5				
3. Samford	4				
4. Wofford	3				
Furman	3				
Western Carolina	3				
7. ETSU	2				
UNCG	2				
VMI	2				

**2019 Southern Conference Baseball  
SoCon Batting Leaders (as of Mar 18, 2019)  
(All games)**

Hitting minimums - 1 Games 50% of Games 2.0 AB/Game 2.5 TPA/Game  
Pitching minimums - 1 Games 1.0 IP/Game

<b>Batting avg</b>		<b>Slugging pct</b>		<b>On base pct</b>	
1. Lawson Hill-WOF	.457	1. Justice Bigbie-WCU	.708	1. Cullen Smith-ETSU	.512
2. Justice Bigbie-WCU	.415	2. Cullen Smith-ETSU	.692	2. Justice Bigbie-WCU	.506
3. Cullen Smith-ETSU	.400	3. Kel Johnson-MER	.683	3. Lawson Hill-WOF	.495
4. Brooks Carlson-SAM	.397	4. Matthew Koehler-WCU	.672	4. Brooks Carlson-SAM	.477
5. Will Prater-WCU	.394	5. Brooks Carlson-SAM	.644	5. Ryan Smoot-VMI	.462
6. Colby Emmertz-ETSU	.380	6. Ethan Cady-ETSU	.641	6. Mike Brown-WOF	.455
7. Angelo DiSpigna-MER	.368	7. RJ Yeager-MER	.636	7. Matthew Koehler-WCU	.453
8. Cade Gilbert-ETSU	.366	8. Daylan Nanny-WCU	.592	8. EMBLER, Austin-UNCG	.450
9. Matthew Koehler-WCU	.359	9. Jackson Greer-ETSU	.591	9. Angelo DiSpigna-MER	.448
10. John Michael Boswell-FUR	.344	10. Luke Robinson-WCU	.587	10. Jackson Greer-ETSU	.447
<b>Runs scored</b>		<b>Hits</b>		<b>Runs batted in</b>	
1. Kyle Dockus-MER	24	1. Lawson Hill-WOF	37	1. Kel Johnson-MER	27
2. Andrew Orzel-WOF	23	2. RJ Yeager-MER	30	2. RJ Yeager-MER	22
3. Daylan Nanny-WCU	22	3. Brooks Carlson-SAM	29	3. Justice Bigbie-WCU	21
4. RJ Yeager-MER	21	4. Angelo DiSpigna-MER	28	4. Luke Robinson-WCU	20
Brett Rodriguez-WOF	21	Will Prater-WCU	28	5. Ethan Cady-ETSU	19
Justice Bigbie-WCU	21	6. Kyle Dockus-MER	27	6. Cade Gilbert-ETSU	18
7. Mike Brown-WOF	20	Brett Rodriguez-WOF	27	Hudson Byorick-WOF	18
8. 5 tied at.....	19	Justice Bigbie-WCU	27	Garrett Wilkinson-MER	18
		9. 3 tied at.....	26	9. Jackson Greer-ETSU	17
				Jake Huggins-VMI	17
<b>Doubles</b>		<b>Triples</b>		<b>Home runs</b>	
1. Daylan Nanny-WCU	9	1. Ethan Cady-ETSU	3	1. Kel Johnson-MER	10
2. Preston Moore-SAM	8	2. Matthew Koehler-WCU	2	2. RJ Yeager-MER	6
3. Cullen Smith-ETSU	7	Jalen Jones-WCU	2	3. Luke Robinson-WCU	5
Garrett Wilkinson-MER	7	KUCHMANER, Zach-UNCG	2	Justice Bigbie-WCU	5
Will Knight-VMI	7	5. 18 tied at.....	1	5. Sonny DiChiara-SAM	4
Zach Miller-MER	7			Cullen Smith-ETSU	4
Brooks Carlson-SAM	7			Anthony Mulrine-SAM	4
John Dempsey-WOF	7			Ethan Cady-ETSU	4
Josh Hollifield-VMI	7			Matthew Koehler-WCU	4
10. 7 tied at.....	6			Jackson Greer-ETSU	4
<b>Total bases</b>		<b>Walks</b>		<b>Hit by pitch</b>	
1. Kel Johnson-MER	56	1. Hudson Byorick-WOF	18	1. Ryan Smoot-VMI	12
2. RJ Yeager-MER	56	2. Ryan Smoot-VMI	15	2. Taylor Garris-SAM	9
3. Brooks Carlson-SAM	47	3. Cullen Smith-ETSU	14	3. Luke Robinson-WCU	7
4. Justice Bigbie-WCU	46	Brett Rodriguez-WOF	14	4. Jackson Greer-ETSU	6
5. Cullen Smith-ETSU	45	5. EMBLER, Austin-UNCG	13	5. Jake Lyle-ETSU	5
6. Matthew Koehler-WCU	43	Ethan Cady-ETSU	13	Anthony Mulrine-SAM	5
7. Daylan Nanny-WCU	42	Kaden Dreier-SAM	13	Josh Congdon-WOF	5
8. Lawson Hill-WOF	41	8. 5 tied at.....	12	Immanuel Wilder-WCU	5
Ethan Cady-ETSU	41			Andrew Orzel-WOF	5
10. Jackson Greer-ETSU	39			Mike Brown-WOF	5
<b>Sac bunts</b>		<b>Sac flies</b>		<b>Stolen bases</b>	
1. Matthew Koehler-WCU	4	1. Lawson Hill-WOF	3	1. Brett Rodriguez-WOF	12
EMBLER, Austin-UNCG	4	Will Knight-VMI	3	2. Mike Brown-WOF	11
3. 9 tied at.....	3	FLORES, David-UNCG	3	Jeffery Brown-CIT	11
		HARDISON, Greg-UNCG	3	4. Andrew Orzel-WOF	9
		5. 11 tied at.....	2	Colin Davis-WOF	9
				KOONCE, Jacques-UNCG	9
				Kyle Dockus-MER	9
				8. Ethan Cady-ETSU	8
				Lane Botkin-CIT	8
				10. Matthew Koehler-WCU	7

**March 19, 2019**



<b>Total plate appearances</b>	
1. Kyle Dockus-MER	104
2. Andrew Orzel-WOF	103
RJ Yeager-MER	103
4. Brett Rodriguez-WOF	97
5. Lawson Hill-WOF	94
6. Callen Nuccio-VMI	93
7. Trevor Austin-MER	92
Zach Miller-MER	92
9. Colin Davis-WOF	91
Jake Huggins-VMI	91

<b>Strikeouts</b>	
1. Dax Roper-FUR	27
2. Jordan Fucci-SAM	24
Kel Johnson-MER	24
4. Preston Moore-SAM	23
5. Jordan Starkes-FUR	22
Ethan Cady-ETSU	22
7. Callen Nuccio-VMI	21
Angelo DiSpigna-MER	21
Cody Warner-VMI	21
10. 2 tied at.....	20

<b>At bats</b>	
1. RJ Yeager-MER	88
Andrew Orzel-WOF	88
3. Kyle Dockus-MER	87
4. Kel Johnson-MER	82
5. Lawson Hill-WOF	81
6. Brett Rodriguez-WOF	80
7. Callen Nuccio-VMI	79
Trevor Austin-MER	79
Zach Miller-MER	79
10. 2 tied at.....	78

<b>Caught stealing</b>	
1. Ryan McCarthy-CIT	3
Kyle Dockus-MER	3
Matthew Koehler-WCU	3
4. 8 tied at.....	2

<b>Steal attempts</b>	
1. Brett Rodriguez-WOF	13
2. Jeffery Brown-CIT	12
Kyle Dockus-MER	12
Mike Brown-WOF	12
5. Matthew Koehler-WCU	10
KOONCE, Jacquez-UNCG	10
Colin Davis-WOF	10
8. Lane Botkin-CIT	9
Andrew Orzel-WOF	9
10. Ethan Cady-ETSU	8

<b>Grounded into DP</b>	
1. Luke Robinson-WCU	4
2. MADOLE, Josh-UNCG	3
Colby Emmertz-ETSU	3
CAVENESS, Ryan-UNCG	3
Tilo Skole-CIT	3
John Michael Boswell-FUR	3
Ryan Crockett-SAM	3
Anthony Mulrine-SAM	3
Taylor Garris-SAM	3
10. 8 tied at.....	2

**2019 Southern Conference Baseball  
Game Highs for SoCon (as of Mar 18, 2019)  
(All games)**

TEAM GAME HIGHS

Batting

At bats:	51	-	ETSU (vs Georgia State, Mar 08, 2019)
Runs scored:	21	-	Western Carolina (vs Oakland, Feb 15, 2019)
	21	-	Mercer (vs Alabama A&M, Feb 22, 2019)
Hits:	21	-	Western Carolina (vs UNC Asheville, Mar 06, 2019)
	21	-	Furman (vs Morehead State, Feb 16, 2019)
RBI:	21	-	Mercer (vs Alabama A&M, Feb 22, 2019)
Doubles:	9	-	Western Carolina (vs Oakland, Feb 15, 2019)
Triples:	2	-	Furman (vs Morehead State, Feb 16, 2019)
	2	-	Western Carolina (vs Oakland, Feb 16, 2019)
Home runs:	4	-	(4 times )
Total bases:	39	-	Furman (vs Morehead State, Feb 16, 2019)
Walks:	11	-	Wofford (vs Gardner-Webb, Mar 09, 2019)
Strikeouts:	17	-	VMI (vs Clemson, Feb 23, 2019)
Sac hits:	3	-	UNCG (vs Princeton Tigers, Mar 10, 2019)
	3	-	The Citadel (vs Charleston Southern, Mar 10, 2019)
Sac flies:	2	-	(13 times )
Stolen bases:	8	-	Wofford (vs Bryant, Mar 13, 2019)
Caught stealing:	3	-	UNCG (vs Princeton Tigers, Mar 10, 2019)
Hit by pitch:	5	-	Western Carolina (vs Oakland, Feb 15, 2019)
	5	-	UNCG (vs Penn Quakers, Mar 02, 2019)
Runners LOB:	16	-	Mercer (vs Florida A&M, Feb 26, 2019)
Hit into DP:	5	-	Samford (vs Xavier, Feb 24, 2019)

Fielding

Putouts:	39	-	UNCG (vs Penn Quakers, Mar 02, 2019)
Assists:	19	-	VMI (vs LEHIGH, Mar 15, 2019)
Errors:	5	-	Western Carolina (vs Indiana State, Feb 27, 2019)
	5	-	The Citadel (vs North Alabama, Mar 02, 2019)
	5	-	Western Carolina (vs Oakland, Feb 15, 2019)
Passed balls:	2	-	Mercer (vs Florida State, Mar 01, 2019)
	2	-	Mercer (vs Georgia Southern, Mar 06, 2019)
	2	-	Western Carolina (vs Utah, Mar 02, 2019)
DPs turned:	4	-	Western Carolina (vs Michigan State, Mar 09, 2019)

Pitching

Innings pitched:	13.0	-	UNCG (vs Penn Quakers, Mar 02, 2019)
Strikeouts:	22	-	VMI (vs Northern Kentucky, Mar 02, 2019)
Hits allowed:	1	-	Mercer (vs Alabama A&M, Feb 23, 2019)
Wild pitches:	5	-	The Citadel (vs Charleston Southern, Mar 09, 2019)
	5	-	Wofford (vs Bryant, Mar 13, 2019)
Hit batters:	8	-	Western Carolina (vs Indiana State, Feb 27, 2019)