

Southern Conference Baseball

702 North Pine Street, Spartanburg, SC 29303 • 864-591-5100 • Fax: 864-591-3448

Hannah Simmons, Media Relations Assistant (Baseball contact)

facebook.com/SouthernConference • twitter.com/SoConSports • instagram.com/SouthernConference



2019

#SoConBB

Southern Conference baseball standings - through March 21

Team	Conference					Overall					
	Record	Pct	Home	Away	Streak	Record	Pct.	Home	Away	Neutral	Streak
ETSU	0-0	.000	0-0	0-0	-	14-5	.737	12-1	2-4	0-0	L1
UNCG	0-0	.000	0-0	0-0	-	13-5	.722	12-0	1-4	0-1	L1
Samford	0-0	.000	0-0	0-0	-	14-6	.700	8-3	6-3	0-0	L1
Wofford	0-0	.000	0-0	0-0	-	16-7	.696	16-5	0-2	0-0	W5
Western Carolina	0-0	.000	0-0	0-0	-	10-8	.556	8-8	1-0	1-0	L3
Mercer	0-0	.000	0-0	0-0	-	11-11	.500	10-7	1-4	0-0	L1
The Citadel	0-0	.000	0-0	0-0	-	7-14	.333	7-8	0-5	0-0	L5
Furman	0-0	.000	0-0	0-0	-	5-13	.278	4-8	1-4	0-1	L4
VMI	0-0	.000	0-0	0-0	-	4-16	.200	2-8	0-7	2-1	L1

Notes

•Two teams currently rank in the top 100 for RPI with UNCG at 47 and Samford at 91. Mercer comes in at 157, Wofford at 159, Western Carolina at 178, Furman at 191, The Citadel at 240 and VMI at 273.

•Eight teams open up their 2019 conference slate this weekend. Wofford, will open up their conference slate on March 29 against Mercer.

Upcoming Schedule (all times eastern)

March 22 (Friday)

UNCG at Mercer*^	6 p.m.
Wofford at Florida A&M	5 p.m.
Western Carolina at ETSU*^	6 p.m.
Furman at Samford*	6 p.m.
VMI at The Citadel*^	6:30 p.m.

^ = SDN
% = ESPN+
= ESPN3

March 23 (Saturday)

Furman at Samford*	2 p.m.
Western Carolina at ETSU*	2 p.m.
VMI at The Citadel*^	2 p.m.
UNCG at Mercer*	2 p.m.
Wofford at Florida A&M	2 p.m.

March 24 (Sunday)

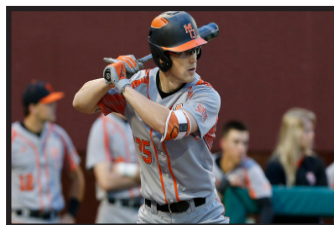
Wofford at Florida A&M	12:30 p.m.
Western Carolina at ETSU*^	1 p.m.
VMI at The Citadel*^	1 p.m.
UNCG at Mercer*	1 p.m.
Furman at Samford*	1 p.m.

* = conference game

Player of the Week

Kel Johnson, OF, Gr. Mercer

Starting all five games for the Bears in the outfield this past week, Johnson hit .350 from the plate with 10 RBI's and four homeruns. The graduate student hit all four of his home runs against Binghamton, hitting two of them on Saturday. The Chattahoochee Hills, Georgia, native extended his reached base streak to 20 consecutive games with at least one hit in all four games this past week, including two hits in each of the three weekend games. He currently leads the SoCon in RBIs (27), home runs (10) and is tied for total bases (56) with teammate RJ Yeager.



Pitcher of the Week

Zak Kent, RHP, Jr. VMI

VMI's Kent went seven innings against Lehigh on Sunday, striking out 15 and giving up just one hit, one walk and one run while tossing 103 pitches. The junior tied the school record for strikeouts in a single game in the aluminum bat era, a mark set in 1998. He improved his record to 2-2 on the season and his ERA to 4.11. The Heathsville, Virginia, native was also named one of this week's Collegiate Baseball's players of the week and currently leads the conference in batters struck out (46).

Preseason teams/polls

Preseason Player of the Year

Caleb Webster, Jr., 3B, UNCG

Preseason Pitcher of the Year

Sam Strickland, So., LHP, Samford

First team

SP Dyland Spence, The Citadel
 SP Sam Strickland, Samford
 RP Nick Spear, Mercer
 C Anthony Mulrine, Samford
 1B Brooks Carlson, Samford
 2B Austin Embler, UNCG
 SS RJ Yeager, Mercer
 3B Caleb Webster, UNCG
 OF Jeffrey Brown, The Citadel
 OF David Beam, ETSU
 OF Colin Davis, Wofford
 DH Le Bassett, Mercer

Second Team

SP Nik Verbeke, Furman
 SP Austin Higginbotham, Wofford
 RP Anthony Garcia, Wofford
 C Bryce Leasure, The Citadel
 1B Jacob Huggins, VMI
 2B Cullen Smith, ETSU
 SS Branden Fryman, Samford
 3B Justice Bigbie, Western Carolina
 OF Jabari Richards, Furman
 OF Matthew Koehler, Western Carolina
 OF Kel Johnson, Mercer
 DH Lawson Hill, Wofford

Coaches Poll

Place	Team (1st-place votes)	Points
1.	Samford (7)	63
2.	UNCG (2)	55
3.	Mercer	52
4.	ETSU	35
5.	Wofford	33
6.	Western Carolina	31
7.	Furman	24
8.	The Citadel	22
9.	VMI	9

Media Poll

Place	Team (1st-place votes)	Points
1.	Samford (8)	123
2.	UNCG (6)	107
3.	Mercer	98
4.	Wofford	83
5.	ETSU	64
6.	Furman	49
7.	Western Carolina	46
8.	VMI	32
9.	The Citadel	28

MLB first-year player draft

The Southern Conference had 17 players selected in the 2018 MLB First-Year Player Draft, with Wofford's Adam Scott going in the fourth round at No. 133 overall. UNCG leads the way with six picks.

Round	Overall	Player	School	Pos.	Team
4	133	Adam Scott	Wofford	LHP	Cleveland Indians
5	152	Austin Cox	Mercer	LHP	Kansas City Royals
6	172	Andrew Moritz	UNCG	OF	Atlanta Braves
7	211	Andrew Wantz	UNCG	RHP	LA Dodgers
7	214	Josh Winder	VMI	RHP	Minnesota Twins
10	313	Robert Broom	Mercer	RHP	Cleveland Indians
12	367	Matt Pita	VMI	INF/OF	New York Yankees
15	436	Matt Frisbee	UNCG	RHP	San Francisco Giants
17	508	Cesar Trejo	UNCG	INF/OF	Seattle Mariners
20	609	Erin Baldwin	Samford	RHP	Arizona Diamondbacks
21	632	Nathan Eaton	VMI	INF/RHP	Kansas City Royals
22	662	Bryce Hensley	UNCG	LHP	Kansas City Royals
24	719	Troy Dixon	Samford	OF	Texas Rangers
25	738	Jack Maynard	UNCG	RHP	Chicago White Sox

Preseason national honors

Collegiate Baseball Preseason All-America Third Team

Le Bassett, 2B, Mercer
 Sam Strickland, LHP, Samford

NCBWA Preseason All-America Third Team

Brooks Carlson, C, Samford

NCBWA Preseason Stopper Watch List

James Giambalvo, ETSU
 Jordan Buster, The Citadel
 Nick Spear, Mercer

SoCon head coaches' career records

COACH, SCHOOL	SoCON (Yrs)	SCHOOL (Yrs)	CAREER (Yrs)
Tony Skole, CIT	119-160 (10th)	31-50 (2nd)	596-608-1 (23rd)
Joe Pennucci, ETSU	13-17 (2nd)	43-35 (2nd)	Same
Brett Harker, FUR	23-28 (3rd)	71-72 (3rd)	Same
Craig Gibson, MER	65-35 (5th)	537-361 (16th)	Same
Link Jarrett, UNCG	80-70 (7th)	201-153 (7th)	Same
Casey Dunn, SAM*	280-129 (11th)	460-389 (15th)	Same
Jonathan Hadra, VMI	38-64 (5th)	105-138 (5th)	Same
Bobby Moranda, WCU	167-135-1 (12th)	326-319-2 (12th)	Same
Todd Interdonato, WOF	134-184 (12th)	307-348 (12th)	Same

* 124 overall wins and 58 SoCon wins from 2011-14 later vacated

SoCon media relations directory

The Citadel (CitadelSports.com)

John Brush (jbrush@citadel.edu)
 (Office) 843-953-6795 (Press box) (803) 270-5716

ETSU (ETSUBucs.com)

Mike Ezekiel (etsusportsinfo@etsu.edu)
 (Office) 423-439-8212 (Press box) (256) 349-1290

Furman (FurmanPaladins.com)

Hunter Reid (hunter.reid@furman.edu)
 (Office) 864-294-2061 (Press box) 864-294-3066

Mercer (MercerBears.com)

Gerrit Van Genderen
 (gerrit.w.vangenderen@live.mercer.edu)
 (Cell) 919-632-0217 (Press box) 919-632-0217

UNCG (UNCGSpartans.com)

Jon Cole (jon.cole77@gmail.com)
 (Cell) 336-302-5504 (Press box) 336-218-3885

Samford (SamfordSports.com)

Joey Mullins (jmmulli1@samford.edu)
 (Office) 205-726-2799 (Press box) 205-726-4167

VMI (VMIKeydets.com)

Mike Carpenter (carpentermj@vmi.edu)
 (Office) 540-464-7015 (Press box) 940-642-9865

Western Carolina (CatamountSports.com)

Daniel Hooker (dhooker@email.wcu.edu)
 (Office) 828-227-2339 (Press box) 828-227-7020

Wofford (WoffordTerriers.com)

Brent Williamson (williamsondb@wofford.edu)
 (Office) 864-597-4093 (Press box) 864-597-4478

Southern Conference (SoConSports.com)

Hannah Simmons (hsimmons@socon.org)
 Office: 864-591-5100

SoCon Player/Pitcher of the Week

Player of the Week	Date	Pitcher of the Week
Jackson Greer, C, ETSU	F18	Shane Connolly, RHP, So., The Citadel
RJ Yeager, SS, Mercer	F25	Jordan Merritt, RHP, Sr., The Citadel
Daylan Nanny, OF, Western Carolina	M4	Hayes Heinecke, LHP, Fr., Wofford
Immanuel Wilder, OF, Western Carolina	M11	Hayes Heinecke, LHP, Fr., Wofford
Kel Johnson, OF, Mercer	M18	Zak Kent, RHP, Jr., VMI
	M25	
	A1	
	A8	
	A15	
	A22	
	A29	
	M6	
	M14	
	M19	

SoCon Player/Pitcher of the Month

Player of the Month	Month	Pitcher of the Month
RJ Yeager, MER, So.	February	Jordan Merritt, CIT, Sr.,
	March	
	April	
	May	

SoCon active career leaders

Batting Average (Min. 100 AB)

- .364 Caleb Webster, UNCG
- .356 Brooks Carlson, Samford
- .345 Justice Bigbie, Western Carolina
- .339 Lawson Hill, Wofford
- .333 Austin Embler, UNCG

On-Base Pct. (Min. 100 AB)

- .441 Brooks Carlson, Samford
- .418 Brett Rodriguez, Wofford
- .415 Austin Embler, UNCG
- .412 RJ Yeager, Mercer
- .410 Ryan Caveness, UNCG

Slugging Pct. (Min. 100 AB)

- .574 Brooks Carlson, Samford
- .563 Colin Davis, Wofford
- .519 Jabari Richards, Furman
- .517 Justice Bigbie, Western Carolina
- .508 RJ Yeager, Mercer

Games Played

- 165 Matthew Koehler, Western Carolina
- 160 Ben Penden, The Citadel
- 149 Austin Embler, UNCG
- 146 Jabari Richards, Furman
- 139 Branden Fryman, Samford

Runs

- 115 Austin Embler, UNCG
- 111 Matthew Koehler, Western Carolina
- 110 Jabari Richards, Furman
- 105 Caleb Webster, UNCG
- 94 Branden Fryman, Samford

Hits

- 187 Caleb Webster, UNCG
- 184 Austin Embler, UNCG
- 164 Jabari Richards, Furman
- 163 Branden Fryman, Samford
- 148 Matthew Koehler, Western Carolina

Runs Batted In

- 94 Ben Peden, The Citadel
- 91 Anthony Mulrine, Samford
- 89 Jabari Richards, Furman
- 86 Caleb Webster, UNCG
- 76 Austin Embler, UNCG

Doubles

- 33 Cullen Smith, ETSU
- 31 Matthew Koehler, Western Carolina
- 28 Jabari Richards, Furman
- 28 Ben Peden, The Citadel
- 27 Austin Embler, UNCG
- 25.27 Caleb Webster, UNCG

Triples

- 10 Jabari Richards, Furman
- 6 Caleb Webster, UNCG
- 6 Matthew Koehler, Western Carolina
- T4.5 Austin Embler, UNCG
- T4.5 Brett Rodriguez, Wofford

Home Runs

- 23 Jabari Richards, Furman
- 17 Ben Peden, The Citadel
- 16 Anthony Mulrine, Samford
- T3.16 Ayrtton Schafer, Samford
- 14 Jackson Greer, ETSU
- T5.14 Colin Davis, Wofford
- T5.14 Matthew Koehler, Western Carolina

Walks

- 84 Brett Rodriguez, Wofford
- 73 Austin Embler, UNCG
- 65 Cullen Smith, ETSU
- T4.64 Ben Peden, The Citadel
- T4.64 Matthew Koehler, Western Carolina

Stolen Bases

- 54 Brett Rodriguez, Wofford
- 41 Branden Fryman, Samford
- 33 Jeffrey Brown, The Citadel
- 31 Matthew Koehler, Western Carolina
- 28 Andrew Orzel, Wofford

ERA (Min. 100 IP)

- 2.80 Samuel Strickland, Samford
- 3.85 Chad Sykes, UNCG
- 4.09 Micah Kaczor, ETSU
- 4.26 Nick Spear, MER
- 4.54 Stephen Jones, Samford

Wins

- 16 Austin Higginbotham, Wofford
- 15 Kevin Coulter, Mercer
- 12 Stephen Jones, Samford
- T3.12 Nick Spear, Mercer
- 11 Samuel Strickland, Samford

Saves

- 14 Nick Spears, Mercer
- 13 Chad Sykes, UNCG
- 9 James Giambalvo, ETSU
- 8 Jordan Buster, The Citadel
- 7 Stephen Jones, Samford

Opponent Batting Avg. (Min. 100 IP)

- .213 Samuel Strickland, Samford
- .222 Chad Sykes, UNCG
- .231 Nick Spear, Mercer
- .241 Zak Kent, VMI
- T4.244 Micah Kaczor, ETSU

Appearances

- 92 Nick Spear, Mercer
- 90 Jordan Buster, The Citadel
- 66 Jack Rude, Samford
- T3.66 Chad Sykes, UNCG
- 61 Kevin Coulter, Mercer

Games Started

- 40 Austin Higginbotham, Wofford
- 34 Kevin Coulter, Mercer
- T2.34 Stephen Jones, Samford
- 28 Zak Kent, VMI
- 25 Dylan Spence, The Citadel

Complete Games

- 5 Austin Higginbotham, Wofford

10 players tied at 1

Shutouts

- 1 Shane Connolly, The Citadel
- 1 Austin Higginbotham, Wofford
- 1 Hayes Heinecke, Wofford

Innings Pitched

- 255.0 Austin Higginbotham, Wofford
- 218.1 Kevin Coulter, Mercer
- 180.1 Stephen Jones, Samford
- 156.1 Zak Kent, VMI
- 155.2 Dylan Spence, The Citadel

Strikeouts

- 189 Austin Higginbotham, Wofford
- 176 Nick Spear, Mercer
- 172 Zak Kent, VMI
- 155 Kevin Coulter, Mercer
- 145 Jordan Buster, The Citadel

Strikeouts Per 9 IP (Min. 100 IP)

- 12.51 Nick Spear, Mercer
- 10.48 Chad Sykes, UNCG
- 10.44 Jordan Buster, The Citadel
- 9.90 Zak Kent, VMI
- 9.51 Taylor Purus, Western Carolina

Hits Allowed Per 9 IP (Min. 100 IP)

- 7.22 Samuel Strickland, Samford
- 7.32 Chad Sykes, UNCG
- 7.74 Nick Spear, Mercer
- 8.35 Zak Kent, VMI
- 8.42 Jordan Buster, The Citadel

Southern Conference versus nonconference opponents

America East (3-6)

3/8 Binghamton 4, [VMI 2](#)
 3/9 Binghamton 8, [VMI 4](#)
 3/10 Binghamton 2, [VMI 1](#)
 3/15 Maine 2, [Samford 5](#)
 3/15 Binghamton 6, [Mercer 4](#)
 3/16 Binghamton 10, [Mercer 7](#)
 3/16 Maine 6, [Samford 4](#)
 3/17 Binghamton 3, [Mercer 10](#)
 3/17 Maine 0, [Samford 4](#)

American Athletic (1-3)

2/15 Samford 4, [South Florida 7](#)
 2/16 Samford 7, [South Florida 3](#)
 2/17 Samford 1, [South Florida 4](#)
 3/3 ECU 12, [Western Carolina 6](#)
 4/16 The Citadel at South Florida 7 p.m.
 4/19 The Citadel at South Florida 6:30 p.m.
 4/20 The Citadel at South Florida 1 p.m.

Atlantic 10 (3-2)

2/15 Saint Joseph's 3, [VMI 9](#)
 2/17 Saint Joseph's 4, [VMI 9](#)
 2/21 VCU 13, [Wofford 3](#)
 2/24 Saint John's 5, [Western Carolina 2](#)
 2/24 Saint John's 4, [Western Carolina 13](#)
 3/6 VCU at VMI Postponed
 3/26 VMI at VCU 6:30 p.m.
 4/10 George Mason at UNCG 6 p.m.
 4/13 George Mason at UNCG 3 p.m.
 4/14 George Mason at UNCG 1 p.m.
 4/16 Richmond at VMI 6 p.m.

Atlantic Coast (1-17)

2/19 ETSU 3, [Virginia Tech 9](#)
 2/19 VMI 0, [Virginia 9](#)
 2/23 UNCG at Virginia Tech Cancelled
 2/23 VMI 6, [Clemson 8](#)
 2/23 VMI 2, [Clemson 8](#)
 2/24 VMI 6, [Clemson 11](#)
 2/24 UNCG 4, [Virginia Tech 12](#)
 2/25 UNCG 1, [Virginia Tech 2](#)
 2/26 ETSU 3, [Clemson 14](#)
 2/27 UNCG 1, [Wake Forest 2 \(10.inn\)](#)
 3/1 Mercer 5, [Florida State 9](#)
 3/1 Furman at Wake Forest Postponed
 3/1 Mercer 5, [Florida State 9](#)
 3/2 Mercer 1, [Florida State 12](#)
 3/2 Wake Forest 13, [Furman 7](#)
 3/3 Mercer 1, [Florida State 5](#)
 3/3 Wake Forest 5, [Furman 1](#)
 3/5 Clemson 3, [Furman 1](#)
 3/13 Notre Dame 9, [Western Carolina 16](#)
 3/19 Georgia Tech 14, [Mercer 8](#)
 3/26 Wake Forest at UNCG 6 p.m.
 4/2 Virginia Tech at VMI 6 p.m.
 4/9 UNCG at UNC 6 p.m.
 4/10 Virginia Tech at ETSU 6 p.m.
 4/10 Furman at Clemson 6:30 p.m.
 4/23 VMI at Virginia Tech 6 p.m.
 5/3 Western Carolina at Georgia Tech 7 p.m.
 5/4 Western Carolina at Georgia Tech 4 p.m.
 5/5 Western Carolina at Georgia Tech 1 p.m.
 5/8 The Citadel at Clemson 6 p.m.
 5/14 Mercer at Georgia Tech TBA

Atlantic Sun (9-0)

3/1 North Alabama 3, [The Citadel 6](#)
 3/2 North Alabama 4, [The Citadel 7](#)
 3/3 North Alabama 3, [The Citadel 8](#)
 3/8 Kennesaw State 5, [Samford 6](#)
 3/9 Kennesaw State 2, [Samford 3](#)
 3/10 Kennesaw State 3, [Samford 6](#)
 3/15 New Jersey Institute of Technology 2, [ETSU 12](#)
 3/16 New Jersey Institute of Technology 1, [ETSU 8](#)
 3/17 New Jersey Institute of Technology 2, [ETSU 3](#)
 4/16 Kennesaw State at Mercer TBA
 5/8 Mercer at Kennesaw State TBA

Big East (2-1)

2/22 Xavier 7, [Samford 10](#)
 2/23 Xavier 7, [Samford 1](#)
 2/24 Xavier 9, [Samford 10](#)
 3/29 Georgetown at ETSU 6 p.m.
 3/30 Georgetown at ETSU 2 p.m.
 3/31 Georgetown at ETSU 1 p.m.

Big South (12-6)

2/19 UNCG 6, [High Point 2](#)
 2/25 Furman 7, [Gardner-Webb 2](#)
 2/24 Radford 9, [Wofford 10 \(10 inn.\)](#)
 2/26 UNC Asheville 2, [Wofford 14](#)
 2/27 UNC Asheville 4, [Furman 3](#)
 2/27 Wofford 3, [Charleston Southern 4 \(11 inn.\)](#)
 3/5 UNCG 3, [Winthrop 6](#)
 3/6 USC Upstate 1, [Wofford 3](#)
 3/6 Western Carolina 16, [UNC Asheville 4](#)
 3/9 Charleston Southern 1, [The Citadel 10](#)
 3/9 Wofford 14, [Garnder-Webb 5](#)
 3/9 Wofford 6, [Garnder-Webb 2](#)
 3/10 Charleston Southern 3, [The Citadel 4](#)
 3/10 Gardner-Webb 5, [Wofford 7](#)
 3/13 Furman 7, [USC Upstate 4](#)
 3/19 Radford 14, [VMI 5](#)
 3/20 Gardner-Webb 5, [Western Carolina 4](#)
 3/20 The Citadel 1, [Winthrop 8](#)
 3/26 Furman at Winthrop 6 p.m.
 3/27 Wofford at Presbyetrain 3 p.m.
 3/27 Gardner-Webb at Furman 6 p.m.
 3/27 UNC Asheville at ETSU 6 p.m.
 4/2 Winthrop at Furman 6 p.m.
 4/2 High Point at UNCG 6 p.m.
 4/2 Radford at ETSU 6 p.m.
 4/3 The Citdel at Charleston Southern 6 p.m.
 4/9 VMI at Radford 6 p.m.
 4/10 Western Carolina at Gardner-Webb 6 p.m.
 4/10 Prebyterian at Wofford 6 p.m.
 4/16 Campbell at UNCG 6 p.m.
 4/16 Wofford at Winthrop 6 p.m.
 4/16 Furman at UNC Asheville 6 p.m.
 4/23 Wofford at UNC Asheville 6 p.m.
 4/24 UNC Asheville at Western Carolina 6 p.m.
 4/30 VMI at Longwood 5 p.m.
 4/30 ETSU at UNC Asheville 6 p.m.
 5/8 Wofford at USC Upstate 6 p.m.
 5/14 Gardner-Webb at ETSU 6 p.m.
 5/14 Winthrop at UNCG 6 p.m.

Big Ten (2-3)

2/22 Michigan 2, [The Citadel 0](#)
 2/23 Michigan 9, [The Citadel 1](#)
 2/24 Michigan 6, [The Citadel 3](#)
 3/8 Ohio State Furman Postponed
 3/9 Michigan State 4, [Furman 6 \(10 inns.\)](#)
 3/10 Ohio State 5, [Western Carolina 8](#)

Big 12 (0-0)

4/26 Kansas at Furman 6 p.m.
 4/27 Kansas at Furman 7 p.m.
 4/28 Kansas at Furman 12 p.m.

Colonial Athletic (2-8)

2/16 VMI 2, [UNCW 3](#)
 2/17 VMI 3, [UNCW 5](#)
 2/26 VMI 4, [James Madison 5](#)
 3/12 Elon 3, [UNCG 4](#)
 3/15 Elon 2, [Western Carolina 5](#)
 3/15 Furman 3, [College of Charleston 13](#)
 3/16 Furman 1, [College of Charleston 2](#)
 3/16 Elon 12, [Western Carolina 11](#)
 3/17 Elon 6, [Western Carolina 2](#)
 3/17 Furman 1, [College of Charleston 3](#)
 3/26 The Citadel at College of Charleston 6 p.m.
 3/27 James Madison at VMI 6 p.m.
 4/9 The Citadel at College of Charleston 6:30 p.m.
 4/23 UNCG at Elon 6 p.m.
 5/14 The Citadel at College of Charleston 2 p.m.

Conference USA (0-1)

2/27 VMI 0, [ODU 5](#)
 3/26 Samford at UAB 7:30 p.m.
 4/2 UAB at Samford 7 p.m.
 4/3 Western Carolina at Marshall 3 p.m.
 4/30 UNCG at Charlotte 6 p.m.
 5/14 ODU at VMI 6 p.m.

Horizon (4-2)

2/15 Oakland 9, [Western Carolina 21](#)
 2/16 Oakland 8, [Western Carolina 9](#)
 2/17 Oakland 2, [Western Carolina 12](#)
 3/1 Wright State 5, [Western Carolina 3](#)
 3/1 Northern Kentucky at VMI Cancelled
 3/2 Northern Kentucky 3, [VMI 8](#)
 3/2 Northern Kentucky 7, [VMI 6](#)
 4/2 Wofford at Wright State 3 p.m.

Ivy (8-3)

3/1 Penn at UNCG Cancelled
 3/1 Harvard 5, [Wofford 6](#)
 3/2 Harvard 0, [Wofford 8](#)
 3/2 Harvard 5, [Wofford 4](#)
 3/3 Harvard 6, [Wofford 1](#)
 3/2 Penn 3, [UNCG 5](#)
 3/2 Harvard 0, [Wofford 8](#)
 3/2 Harvard 5, [Wofford 4](#)
 3/4 Penn 7, [UNCG 10](#)
 3/8 Princeton 2, [UNCG 3](#)
 3/9 Princeton 3, [UNCG 5](#)
 3/10 Princeton 3, [UNCG 5](#)

Metro Atlantic Athletic (8-0)

2/15 Iona 3, [ETSU 4](#)
 2/15 Quinnipiac 5, [UNCG 12](#)
 2/16 Iona 3, [ETSU 14](#)
 2/16 Quinnipiac 2, [UNCG 8](#)
 2/17 Iona 4, [ETSU 14](#)
 2/17 Quinnipiac at UNCG Cancelled
 3/5 Samford 5, [Jacksonville State 3](#)
 3/16 Jacksonville 4, [UNCG 5](#)
 3/16 Jacksonville 3, [UNCG 13](#)

Mid-American (2-2)

2/15 Ohio 0, [Wofford 2](#)
 2/16 Ohio 6, [Wofford 4](#)
 2/17 Ohio 2, [Wofford 5](#)
 2/27 Kent State 11, [The Citadel 2](#)

Mid-Eastern Athletic (8-1)

2/15 Delaware State 3, [The Citadel 1](#)
 2/16 Delaware State 0, [The Citadel 5](#)
 2/17 Delaware State 3, [The Citadel 12](#)
 2/25 Florida A&M 7, [Mercer 8](#)
 2/26 Florida A&M 3, [Mercer 16](#)
 2/27 Florida A&M 1, [Mercer 5](#)
 3/12 Savannah State 1, [Mercer 8](#)
 3/19 Maryland Eastern Shore 0, [Wofford 9](#)
 3/19 North Carolina A&M 8, [UNCG 5](#)
 3/20 Maryland Eastern Shore 5, [Wofford 13](#)
 3/22 Wofford at Florida A&M 5 p.m.
 3/23 Wofford at Florida A&M 2 p.m.
 3/24 Wofford at Florida A&M 12:30 p.m.
 4/23 Mercer at Florida A&M TBA

Missouri Valley (6-5)

2/15 Evansville 4, [Mercer 5](#)
 2/16 Evansville 6, [Mercer 7](#)
 2/17 Evansville 7, [Mercer 2](#)
 2/26 Indiana State 8, [Western Carolina 4](#)
 2/27 Indiana State 9, [Western Carolina 10](#)
 3/8 Indiana State 7, [Mercer 12](#)
 3/9 Indiana State 3, [Mercer 7](#)
 3/10 Indiana State 9, [Mercer 4](#)
 3/15 The Citadel 1, [Indiana State 8](#)
 3/16 The Citadel 2, [Indiana State 4](#)
 3/17 The Citadel 0, [Indiana State 8](#)

Northeast (6-1)

2/23 Wagner 1, [ETSU 6](#)
 2/24 Wagner 3, [ETSU 4](#)
 2/24 Wagner 1, [ETSU 7](#)
 3/1 LIU Brooklyn 3, [ETSU 10](#)
 3/2 LIU Brooklyn 2, [ETSU 7](#)
 3/3 LIU Brooklyn 2, [ETSU 7](#)
 3/13 Bryant 12, [Wofford 11](#)

Ohio Valley (4-2)

2/15 Morehead State 6, [Furman 3](#)
 2/16 Morehead State 6, [Furman 5](#)
 2/17 Morehead State 11, [Furman 16](#)
 3/16 Jacksonville State 3, [UNCG 13](#)
 3/16 Jacksonville State 4, [UNCG 5](#)
 3/17 Jacksonville State 4, [UNCG 8](#)
 4/5 UT Martin at Samford 7 p.m.
 4/6 UT Martin at Samford 3 p.m.
 4/7 UT Martin at Samford 2 p.m.
 4/30 Jacksonville State at Samford 7 p.m.
 5/10 Mercer at Belmont TBA
 5/11 Mercer at Belmont TBA
 5/12 Mercer at Belmont TBA
 5/14 Western Carolina at Eastern Kentucky 6:30 p.m.
 5/16 Eastern Illinois at VMI 6 p.m.
 5/17 Eastern Illinois at VMI 4 p.m.
 5/18 Eastern Illinois at VMI 1 p.m.

March 21, 2019

Nonconference continued

Patriot (4-3)

3/15 Lafayette 1, **Wofford 15**
 3/15 **Lehigh 1**, VMI 0
 3/16 Lafayette 3, **Wofford 13**
 3/16 **Lehigh 15**, VMI 13
 3/17 Lehigh 1, **VMI 11**
 3/17 Lafayette 6, **Wofford 7**

Pac 12 (1-0)

3/2 **Utah 14**, Western Carolina 0

Southeastern (0-4)

3/5 The Citadel 0, **South Carolina 9**
 3/6 ETSU 4, **Vanderbilt 12**
 3/12 **South Carolina 10**, The Citadel 9
 3/12 Samford 6, **Vanderbilt 11**
 3/19 Tennessee 5, ETSU 1
 3/19 South Carolina 12, Furman 7
 3/20 Mississippi at Samford 7 p.m.
 3/26 ETSU at Tennessee 6 p.m.
 4/9 Alabama at Samford 7 p.m.
 4/30 The Citadel at Georgia 6 p.m.
 5/8 Furman at South Carolina 7 p.m.
 5/14 Samford at Alabama 7 p.m.

Southwestern Athletic (5-0)

2/22 Alabama A&M 0, **Mercer 21**
 2/23 Alabama A&M 1, **Mercer 10**
 2/24 Alabama A&M 7, **Mercer 8**
 2/26 **Samford 10**, Alabama State 5
 3/6 Alabama State 3, **Samford 8**
 4/23 Alabama A&M at Samford 7 p.m.

Sun Belt (10-3)

3/1 **Samford 13**, Georgia State 2
 3/2 **Samford 8**, Georgia State 6
 3/2 **Samford 2**, Georgia State 1
 3/5 Georgia State 11, **Mercer 14**
 3/6 Mercer 3, **Georgia Southern 13**
 3/8 ETSU 5, **Georgia State 6**
 3/8 Kennesaw State 5, **Samford 6**
 3/9 Appalachian State 5, **Furman 6**
 3/9 **ETSU 5**, Georgia State 1
 3/9 Kennesaw State 2, **Samford 3**
 3/10 **Appalachian State 14**, Furman 0
 3/10 **ETSU 8**, Georgia State 2
 3/10 Kennesaw State 3, **Samford 6**
 3/19 Georgia Southern 6, The Citadel 2

3/26 Georgia Southern at Mercer TBA
 4/3 Furman at Georgia State 5 p.m.
 4/9 Appalachian State at Western Carolina
 5 p.m.
 4/10 Mercer at Georgia State TBA
 4/16 Appalachian State at ETSU 6 p.m.
 4/16 Samford at Troy 7 p.m.
 4/23 The Citadel at Georgia Southern 6 p.m.
 4/24 Georgia State at Furman 6 p.m.
 4/24 Troy at Samford 7 p.m.
 4/30 Western Carolina at Appalachian State 5 p.m.

Total 101-73 (.580)

All times Eastern
Winnings Teams in Bold
Home Teams Underlined

SoCon vs. ranked teams

Date	SoCon	Opponent	Result
2/22	The Citadel	#17 Michigan	L, 0-2
2/23	The Citadel	#17 Michigan	L, 1-9
2/23	VMI	#14 Clemson	L, 2-8
2/23	VMI	#14 Clemson	L, 6-8
2/24	The Citadel	#17 Michigan	L, 3-6
2/24	VMI	#14 Clemson	L, 6-11
2/26	ETSU	#14 Clemson	L, 3-14
3/1	Mercer	#11 Florida State	L, 5-9
3/2	Mercer	#11 Florida State	L, 1-12
3/3	Western Carolina	#9 ECU	L, 6-12
3/3	Mercer	#11 Florida State	L, 1-5
3/5	The Citadel	#24 South Carolina	L, 0-9
3/6	ETSU	#1 Vanderbilt	L, 4-12
3/12	The Citadel	#22 South Carolina	L, 9-10
3/16	Samford	#1 Vanderbilt	L, 6-11
3/19	ETSU	#22 Tennessee	L, 1-5
3/20	Samford	#2 Michigan	L, 4-6

Record: 0-17 (.000)

Southern Conference versus other conferences (1997-2018)

	1997	1998	1999	2000	2001	2002	2003	2004	2005	2006	2007	2008	2009	2010	2011	2012	2013	2014	2015	2016	2017	2018
America East	0-1	1-0	0-0	4-1	4-0	8-2	5-3	0-1	5-5	6-2	3-0	9-3	3-0	2-1	1-0	2-1	3-1	3-3	7-2	3-0	2-3	
American Athletic	-	-	-	-	-	-	-	-	-	-	-	-	-	-	-	-	-	4-6	1-3	0-4	3-2	4-10
Atlantic Coast	5-25	8-34	7-32	8-31	5-30	3-41	5-33	12-34	9-28	9-24	12-27	10-33	11-32	14-17	7-29	13-26	6-29	13-25	9-18	6-21	3-16	5-17
Atlantic Sun	8-13	11-16	10-10	10-10-1	11-5	8-6	11-9	15-14	18-13	16-7	22-14	20-7	12-11	17-8	13-17	17-12	13-11	12-9	7-8	6-12	4-8	6-4
Atlantic 10	0-3	5-2	3-1	1-0	0-2	7-9	2-1	7-1	6-4	9-3-1	15-4	4-2	6-4	4-2	7-3	7-1	12-9	8-4	2-5	8-12	6-6	8-7
Big East	0-6	1-4	6-7-1	4-2	9-2	4-7	1-2	5-4	4-3	6-3	2-1	5-1	1-2	3-4	7-7	2-2	4-8	6-1	4-2	13-2	5-3	5-0
Big South	27-13	23-23	22-25	27-38	30-29	22-33	27-28	29-20	31-21	24-18	18-18	34-14	44-10	41-23	25-26-1	33-22	31-24	32-21	18-30	29-20	22-19	20-14
Big Ten	0-2	0-1	0-0	0-0	2-1	4-2	0-0	0-0	0-1	4-2	2-2	1-1	1-0	3-3	0-1	6-9	7-3	6-4	5-1	7-4	7-6	1-1
Big 12	0-0	0-0	0-0	0-0	0-1	0-0	2-3	0-1	0-0	1-2	0-0	0-0	0-1	0-2	0-0	2-4	2-0	0-2	0-3	7-4	0-0	1-2
Big West	0-0	0-0	0-0	0-0	0-0	0-0	0-0	0-0	0-0	0-0	0-0	0-0	0-0	0-0	0-0	0-0	0-0	0-0	0-0	0-0	0-0	0-0
Colonial	13-15	12-8	4-13	5-14	9-12	6-8	6-4	6-5	9-4	10-4	9-3	9-7	6-3	5-2	11-7	7-8	7-8	5-8	5-11	3-16	8-8	6-7
Conference USA	1-6	3-4	2-5	1-9	0-8	2-4	2-7	4-11	5-5	4-2	3-6	4-6	2-6	7-7	4-4	2-3	4-3	4-3	1-4	4-5	4-4	5-3
Great West	-	-	-	-	-	-	-	-	0-0	0-0	0-0	0-0	0-0	2-1	1-0	0-0	0-0	0-0	0-0	0-0	0-0	1-0
Horizon	-	-	-	-	-	-	-	-	5-1	6-2	1-0	2-0	0-0	5-0	7-4	0-1	3-1	1-3	0-2	1-2	0-0	5-2
Independents	10-7	1-3	11-6-1	0-0	1-1	1-1	6-2	2-4	3-2	3-1	9-2	6-0	4-2	0-0	0-0	0-0	0-0	0-0	0-0	0-0	0-0	0-0
Ivy	3-2	2-1	1-2	2-3	1-2	2-1	2-0	3-4-1	7-1	14-4	17-8	12-4	2-1	8-1	7-1	4-1	3-4	2-1	6-7	1-2	6-6	11-2
Metro Atlantic	1-0	0-1	1-1	1-0	4-2	8-0	9-2	5-0	6-1	12-1	8-1	8-7	0-0	8-0	4-1	8-1	6-1	4-2	7-0	11-1	5-3	13-4
Mid-American	4-6	3-6	4-4	2-1	3-2	2-0	6-3	11-6	7-3	8-5	3-1	4-2	9-5	6-1	11-1	10-3	4-1	4-6	6-3	4-4	11-7	1-5
Mid-Eastern	6-1	8-0	13-1	11-1	9-0	22-3	10-2	8-3	9-3	10-4	9-3	10-4	13-1	4-0	7-0	13-0	8-1	11-3	14-2	11-3	20-8	5-3
Missouri Valley	0-0	0-0	0-0	0-0	0-0	0-0	0-0	0-0	0-0	0-1	0-0	4-3	1-3	3-3	0-0	0-0	0-1	0-0	1-2	1-0	2-1	0-3
Mountain West	-	-	-	3-1	1-4	0-0	0-3	0-0	0-0	1-0	1-3	0-0	0-0	4-4	0-0	2-0	0-0	0-0	3-0	0-0	0-0	0-0
Northeast	2-1	7-0	4-1	2-1	3-0	2-0	2-0	6-0	0-0	1-0	4-3	4-1	2-0	4-0	0-0	1-0	0-0	5-1	0-3	0-0	0-0	2-1
Ohio Valley	5-6	2-2-1	4-5	3-3	7-1	3-2	5-1	3-3	5-3	0-0	3-4	4-2	5-3	5-7	5-2	7-3	6-1	4-1	11-3	5-1	9-3	7-6
Pac-12	0-0	0-0	0-0	0-0	0-0	0-0	0-0	0-0	0-0	0-0	0-0	0-2	2-1	0-0	0-0	0-0	2-1	2-0	0-2	0-0	0-0	0-0
Patriot	5-0	2-4	1-2	3-1	4-2	5-2	8-0	1-0	3-0	3-0	11-7	1-1	4-1	4-4	2-2	1-1	4-1	4-0	6-1	8-2	7-1	8-1
Southeastern	3-26	4-24	4-21	1-37	6-28	2-20	4-20	2-20	7-15	7-23	4-20	3-18	8-14	5-20	9-12	10-17	7-20	6-19	4-16	3-10	6-13	8-15
Southland	0-0	0-0	0-0	0-0	0-0	0-0	0-0	0-0	0-0	0-0	1-2	2-1	0-0	0-1	0-0	0-0	0-0	0-0	0-0	0-0	0-0	4-1
SWAC	0-0	0-0	0-0	0-0	0-0	0-0	0-0	0-0	0-0	0-0	0-0	0-0	1-0	3-0	2-0	2-0	5-0	5-2	4-1	3-10	4-0	0-0
Summit	2-1	0-0	7-2	4-1	5-0	0-0	1-4	0-0	1-1	0-0	3-0	0-0	0-0	1-2	3-0	3-0	0-0	0-0	0-0	0-0	0-0	0-0
Sun Belt	0-2	1-1	0-3	0-0	0-2	1-3	0-0	1-2	1-2	0-4	0-1	0-0	0-2	1-1	2-1	6-2	2-4	5-0	6-4	3-11	5-10	7-11
West Coast	0-0	0-0	0-0	0-0	0-0	0-0	0-0	0-0	0-0	0-0	0-1	0-0	0-2	0-0	0-0	0-0	2-1	0-0	0-0	1-3	0-0	0-0
WAC	1-1	0-0	0-0	0-0	0-0	0-0	0-0	0-1	0-2	0-0	1-2	0-0	0-0	2-6	0-0	0-0	0-0	0-0	0-0	0-0	0-0	0-0
Reclassifying	-	-	-	-	-	-	-	-	0-0	3-1	0-0	0-0	5-0	4-0	7-1	0-0	0-0	0-0	0-0	0-0	0-0	0-0
Total Wins	100	99	104	105	122	118	117	127	142	156	160	156	146	159	143	157	140	146	123	142	144	135
Total Losses	137	137	143	147	136	144	128	137	113	122	130	119	107	109	123	116	133	122	134	142	127	122
Total Ties	1	1	2	0	0	0	0	1	0	1	0	0	0	1	0	0	0	0	0	0	0	-
Win Pct.	.422	.420	.422	.417	.473	.450	.478	.481	.557	.561	.552	.567	.577	.593	.537	.575	.513	.545	.479	.500	.531	.525

Team-by-team results



The Citadel

7-14, 0-0 SoCon

Date	Opponent	Time (ET)
F15	DELAWARE STATE	L, 1-3
F16	DELAWARE STATE	W, 5-0
F17	DELAWARE STATE	W, 12-3
F22	MICHIGAN	L, 0-2
F23	MICHIGAN	L, 1-9
F24	MICHIGAN	L, 3-6
F27	KENT STATE	L, 2-11
M1	NORTH ALABAMA	W, 6-3
M2	NORTH ALABAMA	W, 7-4
M3	NORTH ALABAMA	W, 8-3
M5	at South Carolina	L, 0-9
M6	WINTHROP	L, 1-4
M8	CHARLESTON SOUTHERN	W, 10-1
M9	at Charleston Southern	L, 5-10
M10	CHARLESTON SOUTHERN	W, 4-3
M12	SOUTH CAROLINA	L, 9-10
M16	at Indiana State	L, 1-5
M16	at Indiana State	L, 2-4
M17	at Indiana State	L, 0-8
M19	GEORGIA SOUTHERN	L, 2-6
M20	at Winthrop	L, 1-8
M22	VMI*	6:30 p.m.
M23	VMI*	2 p.m.
M24	VMI*	1 p.m.
M26	at College of Charleston	6 p.m.
M29	at Furman*	6 p.m.
M30	at Furman*	4 p.m.
M31	at Furman*	1 p.m.
A3	at Charleston Southern	6 p.m.
A5	MERCER*	6:30 p.m.
A6	MERCER*	2 p.m.
A7	MERCER*	1 p.m.
A9	COLLEGE OF CHARLESTON	6:30 p.m.
A12	at Samford*	7 p.m.
A13	at Samford	3 p.m.
A14	at Samford	1 p.m.
A18	at South Florida	7 p.m.
A19	at South Florida	6:30 p.m.
A20	at South Florida	1 p.m.
A23	at Georgia Southern	6 p.m.
A26	at UNCG*	6 p.m.
A27	at UNCG*	3 p.m.
A28	at UNCG*	1 p.m.
A30	Georgia^	6 p.m.
M3	WOFFORD*	6 p.m.
M4	WOFFORD*	2 p.m.
M5	WOFFORD*	1 p.m.
M8	at Clemson	6 p.m.
M10	ETSU*	4 p.m.
M11	ETSU*	2 p.m.
M12	ETSU*	1 p.m.
M14	at College of Charleston	2 p.m.
M16	at Western Carolina*	5 p.m.
M17	at Western Carolina*	5 p.m.
M18	at Western Carolina*	2 p.m.

* - Southern Conference game

^ North Augusta, S.C.

§-SoConChampionship(FluorField;Greenville,S.C.)



ETSU

14-5, 0-0 SoCon

Date	Opponent	Time (ET)
F15	IONA	W, 4-3
F16	IONA	W, 14-3
F17	IONA	W, 14-4
F19	at Virginia Tech	L, 3-9
F22	WAGNER	W, 6-1
F23	WAGNER	W, 7-1
F24	WAGNER	W, 4-3
F26	at Clemson	L, 3-14
M1	LIU BROOKLYN	W, 10-3
M2	LIU BROOKLYN	W, 7-2
M3	LIU BROOKLYN	W, 7-2
M6	at Vanderbilt	L, 4-12
M8	at Georgia State	L, 5-6 (13)
M9	at Georgia State	W, 8-2
M10	at Georgia State	W, 5-1
M16	NJIT	W, 12-2
M16	NJIT	W, 8-1
M17	NJIT	W, 3-2
M19	TENNESSEE	L, 1-5
M22	WESTERN CAROLINA*	6 p.m.
M23	WESTERN CAROLINA*	2 p.m.
M24	WESTERN CAROLINA*	1 p.m.
M26	at Tennessee	6 p.m.
M27	UNC ASHEVILLE	6 p.m.
M29	GEORGETOWN	6 p.m.
M30	GEORGETOWN	2 p.m.
M31	GEORGETOWN	1 p.m.
A2	RADFORD	6 p.m.
A5	at VMI*	6 p.m.
A6	at VMI*	2 p.m.
A7	at VMI*	1 p.m.
A10	VIRGINIA TECH	6 p.m.
A12	at Furman*	6 p.m.
A13	at Furman*	4 p.m.
A14	at Furman*	1 p.m.
A16	APPALACHIAN STATE	6 p.m.
A18	WOFFORD*	6 p.m.
A19	WOFFORD*	6 p.m.
A20	WOFFORD*	2 p.m.
A26	at Mercer*	6 p.m.
A27	at Mercer*	2 p.m.
A28	at Mercer*	1 p.m.
A30	at UNC Asheville	6 p.m.
M3	UNCG*	6 p.m.
M4	UNCG*	2 p.m.
M5	UNCG*	1 p.m.
M10	at The Citadel*	4 p.m.
M11	at The Citadel*	2 p.m.
M12	at The Citadel*	1 p.m.
M14	GARDNER-WEBB	6 p.m.
M16	SAMFORD*	6 p.m.
M17	SAMFORD*	6 p.m.
M18	SAMFORD*	2 p.m.

* - Southern Conference game

§-SoConChampionship(FluorField;Greenville,S.C.)



Furman

5-13, 0-0 SoCon

Date	Opponent	Time (ET)
F15	MOREHEAD STATE	L, 3-6
F16	MOREHEAD STATE	L, 5-6
F17	MOREHEAD STATE	W, 16-11
F24	GARDNER-WEBB	L, 3-5
F25	GARDNER-WEBB	W, 7-2
F27	UNC ASHEVILLE	L, 3-4
M2	Wake Forest^	L, 7-13
M3	at Wake Forest	L, 1-5
M3	at Wake Forest	L, 2-11
M5	CLEMSON	L, 1-3
M9	APPALACHIAN STATE	W, 6-5
M10	at Appalachian State	L, 0-14
M11	OHIO STATE	W, 11-10
M13	at USC Upstate	W, 7-4
M15	at College of Charleston	L, 3-13
M16	at College of Charleston	L, 1-2
M17	at College of Charleston	L, 1-3
M19	SOUTH CAROLINA	L, 7-12
M22	at Samford*	6 p.m.
M23	at Samford*	2 p.m.
M24	at Samford*	1 p.m.
M26	at Winthrop	6 p.m.
M27	GARDNER-WEBB	6 p.m.
M29	THE CITADEL*	6 p.m.
M30	THE CITADEL*	4 p.m.
M31	THE CITADEL*	1 p.m.
A2	WINTHROP	6 p.m.
A3	at Georgia State	5 p.m.
A5	at UNCG*	6 p.m.
A6	at UNCG*	3 p.m.
A7	at UNCG*	1 p.m.
A10	at Clemson	6:30 p.m.
A12	ETSU*	6 p.m.
A13	ETSU*	4 p.m.
A14	ETSU*	1 p.m.
A16	at UNC Asheville	6 p.m.
A18	at Western Carolina*	6 p.m.
A19	at Western Carolina*	5 p.m.
A20	at Western Carolina*	2 p.m.
A24	GEORGIA STATE	6 p.m.
A26	KANSAS	6 p.m.
A27	KANSAS	4 p.m.
A28	KANSAS	12 p.m.
M3	VMI*	6 p.m.
M4	VMI*	4 p.m.
M5	VMI*	1 p.m.
M8	at South Carolina	7 p.m.
M10	at Wofford*	5 p.m.
M11	at Wofford	1 p.m.
M12	at Wofford	1 p.m.
M16	MERCER*	6 p.m.
M17	MERCER*	1 p.m.
M18	MERCER*	1 p.m.

* - Southern Conference game

^ - Charlotte, N.C. (BB&T Stadium)

&- Greenville, S.C. (Flour Field)

§-SoConChampionship(FluorField;Greenville,S.C.)

Team-by-team results



Mercer 11-10, 0-0 SoCon

Date	Opponent	Time (ET)
F15	EVANSVILLE	W, 5-4
F16	EVANSVILLE	W, 7-6
F17	EVANSVILLE	L, 2-7
F20	at Florida A&M	W, 7-6
F22	ALABAMA A&M	W, 21-0
F23	ALABAMA A&M	W, 10-1
F24	ALABAMA A&M	W, 8-7
F26	FLORIDA A&M	W, 16-3
F27	FLORIDA A&M	W, 5-1
M1	at Florida State	L, 5-9
M2	at Florida State	L, 1-12
M3	at Florida State	L, 1-5
M5	GEORGIA STATE	W, 14-11
M6	at Georgia Southern	L, 3-13
M8	INDIANA STATE	L, 7-12
M9	INDIANA STATE	L, 3-7
M10	INDIANA STATE	L, 4-9
M12	SAVANNAH STATE	W, 8-1
M15	BINGHAMTON	L, 4-6
M16	BINGHAMTON	L, 7-10
M17	BINGHAMTON	W, 10-3
M19	GEORGIA TECH	L, 8-14
M22	UNCG*	6 p.m.
M23	UNCG*	2 p.m.
M24	UNCG*	1 p.m.
M26	GEORGIA SOUTHERN	6 p.m.
M29	at Wofford*	6 p.m.
M30	at Wofford*	4 p.m.
M31	at Wofford*	1 p.m.
A5	at The Citadel*	TBA
A6	at The Citadel*	TBA
A7	at The Citadel*	TBA
A10	at Georgia State	6 p.m.
A12	WESTERN CAROLINA*	6 p.m.
A13	WESTERN CAROLINA*	2 p.m.
A14	WESTERN CAROLINA*	1 p.m.
A16	KENNESAW STATE	6 p.m.
A18	at VMI*	TBA
A19	at VMI*	TBA
A20	at VMI*	TBA
A23	at Florida A&M	5 p.m.
A26	ETSU*	6 p.m.
A27	ETSU*	2 p.m.
A28	ETSU*	1 p.m.
M3	SAMFORD*	6 p.m.
M4	SAMFORD*	2 p.m.
M5	SAMFORD*	1 p.m.
M8	at Kennesaw State	6 p.m.
M10	at Belmont	TBA
M11	at Belmont	TBA
M12	at Belmont	TBA
M14	at Georgia Tech	6 p.m.
M16	at Furman*	6 p.m.
M17	at Furman*	1 p.m.
M18	at Furman*	1 p.m.

* - Southern Conference game

‡ - SoCon Championship (Fluor Field; Greenville, S.C.)



UNCG 13-6, 0-0 SoCon

Date	Opponent	Time (ET)
F15	QUINNIPIAC	W, 12-5
F16	QUINNIPIAC	W, 8-5
F17	QUINNIPIAC	Cancelled
F19	at High Point	W, 6-2
F23	VIRGINIA TECH	Cancelled
F24	VIRGINIA TECH	L, 4-12
F27	at Wake-Forest	L, 1-2
M2	PENN	W, 5-3
M2	PENN	W, 6-5 (13)
M4	PENN	W, 10-7
M5	at Winthrop	L, 3-6
M8	PRINCETON	W, 3-2
M9	PRINCETON	W, 5-3
M9	PRINCETON	W, 6-2
M10	PRINCETON	W, 5-3
M12	ELON	W, 4-3
M16	JACKSONVILLE	W, 5-4
M16	JACKSONVILLE	W, 13-3
M17	JACKSONVILLE	L, 4-8
M19	NORTH CAROLINA A&T	L, 5-8
M22	at Mercer	6 p.m.
M23	at Mercer	2 p.m.
M24	at Mercer	1 p.m.
M26	WAKE FOREST	6 p.m.
M29	WESTERN CAROLINA	6 p.m.
M30	WESTERN CAROLINA	3 p.m.
M31	WESTERN CAROLINA	1 p.m.
A2	HIGH POINT	6 p.m.
A5	FURMAN*	6 p.m.
A6	FURMAN*	3 p.m.
A7	FURMAN*	1 p.m.
A9	at North Carolina	6 p.m.
A12	GEORGE MASON	6 p.m.
A13	GEORGE MASON	3 p.m.
A14	GEORGE MASON	1 p.m.
A16	CAMPBELL	6 p.m.
A18	at Samford*	7 p.m.
A19	at Samford*	5 p.m.
A20	at Samford*	2 p.m.
A23	at Elon	6 p.m.
A26	THE CITADEL*	6 p.m.
A27	THE CITADEL*	3 p.m.
A28	THE CITADEL*	1 p.m.
A30	at Charlotte	6 p.m.
M3	at ETSU*	6 p.m.
M4	at ETSU*	2 p.m.
M5	at ETSU*	1 p.m.
M10	at VMI*	6 p.m.
M11	at VMI*	2 p.m.
M12	at VMI*	1 p.m.
M14	WITHROP	6 p.m.
M16	WOFFORD*	6 p.m.
M17	WOFFORD*	6 p.m.
M18	WOFFORD*	2 p.m.

* - Southern Conference game

‡ - SoCon Championship (Fluor Field; Greenville, S.C.)



Samford 14-5, 0-0 SoCon

Date	Opponent	Time (ET)
F15	at South Florida	L, 4-7
F16	at South Florida	W, 7-3
F17	at South Florida	L, 1-4
F19	NORTH ALABAMA	Postponed
F22	XAVIER	W, 10-7
F23	XAVIER	L, 1-7
F24	XAVIER	W, 10-9
F26	at Alabama State	W, 10-5
M1	at Georgia State	W, 13-2
M2	at Georgia State	W, 8-6
M3	at Georgia State	W, 2-1
M5	at Jacksonville State	W, 5-3
M6	ALABAMA STATE	W, 8-5
M8	KENNESAW STATE	W, 6-5
M9	KENNESAW STATE	W, 3-2
M10	KENNESAW STATE	W, 6-3
M12	at Vanderbilt	L, 6-11
M15	MAINE	W, 5-2
M16	MAINE	L, 4-6
M17	MAINE	W, 4-0
M20	MISSISSIPPI STATE	L, 4-6
M22	FURMAN*	5 p.m.
M23	FURMAN*	1 p.m.
M24	FURMAN*	12 p.m.
M26	at UAB	5:30 p.m.
M29	at VMI*	4 p.m.
M30	at VMI*	12 p.m.
M31	at VMI*	10 a.m.
A2	UAB	5 p.m.
A5	UT MARTIN	5 p.m.
A6	UT MARTIN	1 p.m.
A7	UT MARTIN	12 p.m.
A9	ALABAMA	5 p.m.
A12	THE CITADEL*	5 p.m.
A13	THE CITADEL*	1 p.m.
A14	THE CITADEL*	11 a.m.
A16	at Troy	5 p.m.
A18	UNCG*	5 p.m.
A19	UNCG*	3 p.m.
A20	UNCG*	12 p.m.
A23	ALABAMA A&M	5 p.m.
A24	TROY	5 p.m.
A26	at Wofford*	4 p.m.
A27	at Wofford*	1 p.m.
A28	at Wofford*	11 a.m.
A30	JACKSONVILLE STATE	5 p.m.
M3	at Mercer*	4 p.m.
M4	at Mercer*	12 p.m.
M5	at Mercer*	11 a.m.
M10	WESTERN CAROLINA*	5 p.m.
M11	WESTERN CAROLINA*	1 p.m.
M12	WESTERN CAROLINA	12 p.m.
M14	at Alabama	5 p.m.
M16	at ETSU*	4 p.m.
M17	at ETSU*	4 p.m.
M18	at ETSU*	11 a.m.

* - Southern Conference game

‡ - SoCon Championship (Fluor Field; Greenville, S.C.)

Team-by-team results



VMI 4-15, 0-0 SoCon

Date	Opponent	Time (ET)
F15	Saint Joseph's&	W, 9-3
F16	at UNCW	L, 2-5
F17	Saint Joseph's&	W, 9-4
F17	at UNCW	L, 3-5
F19	at Virginia	L, 0-9
F23	at Clemson	L, 6-8
F23	at Clemson	L, 2-8
F24	at Clemson	L, 6-11
F26	at James Madison	L, 4-5
F27	at Old Dominion	L, 0-5
M2	NORTHERN KENTUCKY	L, 6-7
M3	NORTHERN KENTUCKY	Cancelled
M6	VCU	Rescheduled
M9	BINGHAMTON	L, 2-4
M9	BINGHAMTON	L, 4-8
M10	BINGHAMTON	L, 1-2
M13	MARSHALL	L, 6-7
M15	LEHIGH	L, 0-1 (11)
M16	LEHIGH	L, 13-15 (10)
M17	LEHIGH	W, 11-1
M19	RADFORD	L, 5-14
M22	at The Citadel*	6 p.m.
M23	at The Citadel*	2 p.m.
M24	at The Citadel*	1 p.m.
M26	at VCU	6:30 p.m.
M27	JAMES MADISON	6 p.m.
M29	SAMFORD*	6 p.m.
M30	SAMFORD*	2 p.m.
M31	SAMFORD*	12 p.m.
A2	VIRGINIA TECH	6 p.m.
A5	ETSU*	6 p.m.
A6	ETSU*	2 p.m.
A7	ETSU*	1 p.m.
A9	at Radford	6 p.m.
A12	at Wofford*	6 p.m.
A13	at Wofford*	3 p.m.
A14	at Wofford*	1 p.m.
A16	RICHMOND	6 p.m.
A18	MERCER*	6 p.m.
A19	MERCER*	4 p.m.
A20	MERCER*	1 p.m.
A23	at Virginia Tech	6 p.m.
A26	at Western Carolina*	5 p.m.
A27	at Western Carolina*	2 p.m.
A28	at Western Carolina*	1 p.m.
A30	at Longwood	5 p.m.
M3	at Furman*	6 p.m.
M4	at Furman*	4 p.m.
M5	at Furman*	1 p.m.
M10	UNCG*	6 p.m.
M11	UNCG*	2 p.m.
M12	UNCG*	1 p.m.
M14	OLD DOMINION	6 p.m.
M15	EASTERN ILLINOIS	6 p.m.
M16	EASTERN ILLINOIS	4 p.m.
M17	EASTERN ILLINOIS	1 p.m.

& - Wilmington, N.C.

* - Southern Conference game

§-SoConChampionship(FluorField;Greenville,S.C.)



Western Carolina 10-8, 0-0 SoCon

Date	Opponent	Time (ET)
F15	OAKLAND	W, 21-9
F16	OAKLAND	W, 9-8
F17	OAKLAND	W, 12-2
F24	ST. JOHN'S	L, 2-5
F24	ST. JOHN'S	W, 13-4
F26	INDIANA STATE	L, 4-8
F27	INDIANA STATE	W, 10-9
M1	Wright State+	L, 3-5
M2	Utah+	L, 0-14
M3	at ECU	L, 6-12
M6	at UNC Asheville	W, 16-4
M8	Michigan State%	Postponed
M9	Michigan State%	W, 6-4 (10)
M10	Ohio State%	W, 8-5
M13	NOTRE DAME	W, 16-9
M15	ELON	W, 5-2
M16	ELON	L, 11-12 (10)
M17	ELON	L, 2-6
M20	GARNDER-WEBB	L, 4-5
M22	at ETSU*	5:30 p.m.
M23	at ETSU*	2 p.m.
M24	at ETSU*	1 p.m.
M29	at UNCG*	6 p.m.
M30	at UNCG*	3 p.m.
M31	at UNCG*	1 p.m.
A3	at Marshall	3 p.m.
A5	WOFFORD*	2 p.m.
A6	WOFFORD*	2 p.m.
A7	WOFFORD*	1 p.m.
A9	APPALACHIAN STATE	5 p.m.
A10	at Gardner-Webb	6 p.m.
A12	at Mercer*	6 p.m.
A13	at Mercer*	2 p.m.
A14	at Mercer*	1 p.m.
A18	FURMAN*	6 p.m.
A19	FURMAN*	5 p.m.
A20	FURMAN*	2 p.m.
A24	UNC ASHEVILLE	6 p.m.
A26	VMI*	5 p.m.
A27	VMI*	2 p.m.
A28	VMI*	1 p.m.
A30	at Appalachian State	5 p.m.
M3	at Georgia Tech	7 p.m.
M4	at Georgia Tech	4 p.m.
M5	at Georgia Tech	1 p.m.
M10	at Samford*	7 p.m.
M11	at Samford*	3 p.m.
M12	at Samford*	2 p.m.
M14	Eastern Kentucky@	6:30 p.m.
M16	THE CITADEL*	5 p.m.
M17	THE CITADEL*	5 p.m.
M18	THE CITADEL*	2 p.m.

* - Southern Conference game

+ - Keith LeClair Classic (Greenville, N.C.)

% - First Pitch Invitational (Greenville, S.C.)

@ - Prasco Park (Mason, Ohio)

§-SoConChampionship(FluorField;Greenville,S.C.)



Wofford 14-9, 0-0 SoCon

Date	Opponent	Time (ET)
F15	OHIO UNIVERSITY	W, 2-0
F16	OHIO UNIVERSITY	L, 4-6
F17	OHIO UNIVERSITY	W, 5-2
F22	BUCKNELL	Cancelled
F23	VCU	L, 3-13
F24	RADFORD	W, 10-9 (10)
F26	UNC ASHEVILLE	W, 14-2
F27	CHARLESTON SOUTHERN	L, 3-4 (11)
M1	HARVARD	W, 6-5
M2	HARVARD	W, 8-0 (7)
M2	HARVARD	L, 4-5
M3	HARVARD	L, 1-6
M5	USC UPSTATE	W, 3-1
M6	PRESBYTERIAN	L, 4-5
M9	GARDNER-WEBB	W, 14-5
M9	at Gardner-Webb	W, 6-2
M10	GARNDER-WEBB	W, 7-5
M12	OHIO STATE	W, 8-6
M13	BRYANT UNIVERSITY	L, 11-12
M15	LAFAYETTE COLLEGE	W, 12-1
M16	LAFAYETTE COLLEGE	W, 13-3
M17	LAFAYETTE COLLEGE	W, 7-6
M19	UNIVERSITYOFMARYLANDEASTERNSHORE	W, 9-0
M20	UNIVERSITYOFMARYLANDEASTERNSHORE	13-5
M22	at Florida A&M	5 p.m.
M23	at Florida A&M	2 p.m.
M24	at Florida A&M	12:30 p.m.
M27	at Presbyterian	3 p.m.
M29	MERCER*	6 p.m.
M30	MERCER*	3 p.m.
M31	MERCER*	1 p.m.
A2	at Wright State	3 p.m.
A5	at Western Carolina*	6 p.m.
A6	at Western Carolina*	2 p.m.
A7	at Western Carolina*	1 p.m.
A10	PRESBYTERIAN	6 p.m.
A12	VMI*	6 p.m.
A13	VMI*	3 p.m.
A14	VMI*	1 p.m.
A16	at Winthrop	6 p.m.
A18	at ETSU*	6 p.m.
A19	at ETSU*	2 p.m.
A20	at ETSU*	1 p.m.
A23	at UNC Asheville	6 p.m.
A26	SAMFORD*	6 p.m.
A27	SAMFORD*	3 p.m.
A28	SAMFORD*	1 p.m.
M3	at The Citadel*	6:30 p.m.
M4	at The Citadel*	6 p.m.
M5	at The Citadel*	1 p.m.
M8	at USC Upstate	6 p.m.
M10	FURMAN*	5 p.m.
M11	FURMAN*	1 p.m.
M12	FURMAN*	1 p.m.
M16	at UNCG*	6 p.m.
M17	at UNCG*	6 p.m.
M18	at UNCG*	2 p.m.

* - Southern Conference game

&- Lexington, S.C.

§-SoConChampionship(FluorField;Greenville,S.C.)

Baseball America Top 25

(WEEK 5)

TEAM	W-L	PREV.
1. UCLA	14-4	2
2. Mississippi State	18-2	6
3. Stanford	12-3	4
4. Louisville	16-4	7
5. Georgia	18-2	8
6. NC State	19-1	20
7. Oregon State	14-3-1	3
8. Vanderbilt	15-5	1
9. Texas	15-7	12
10. LSU	15-5	13
11. Arkansas	17-2	14
12. Auburn	18-2	18
13. Texas A&M	17-5	19
14. Florida	15-7	5
15. Arizona State	19-0	25
16. North Carolina	16-5	15
17. Coastal Carolina	16-4-1	16
18. Ole Miss	14-6	9
19. Texas Tech	12-5	11
20. East Carolina	15-6	17
21. Florida State	14-4	10
22. TCU	12-6	21
23. UC Irvine	12-4	NR
24. Michigan	13-4	NR
25. Oklahoma	16-4	NR

Collegiate Baseball Top 30

(WEEK 5)

TEAM	W-L	POINTS	PREV.
1. N.C. State	19-1	494	2
2. Mississippi State	18-2	493	5
3. UCLA	14-4	491	6
4. Oregon St.	14-3-1	490	3
5. Arizona St.	19-0	488	9
6. Vanderbilt	15-5	486	4
7. Louisiana St.	15-5	484	10
8. Stanford	12-3	480	8
9. Georgia	18-2	478	13
10. Arkansas	17-2	476	17
11. Coastal Carolina	16-4-1	474	11
12. Auburn	18-2	471	23
13. Florida	15-7	468	16
14. Florida St.	14-4	466	1
15. Louisville	16-4	463	15
16. North Carolina	16-5	461	14
17. Texas	15-7	458	20
18. Texas Tech	12-5	457	7
19. Texas A&M	17-5	456	21
20. Clemson	14-5	455	12
21. East Carolina	15-6	453	30
22. U.C. Santa Barbara	14-3	451	25
23. Illinois	13-3	449	29
24. U.C. Irvine	12-4	446	-
25. Oklahoma	16-4	444	27
26. Baylor	13-5	442	24
27. San Diego	14-6	439	24
28. Mississippi	14-6	437	19
29. Miami, Fla.	15-5	434	28
30. Michigan	13-4	431	-

NCBWA Poll

(WEEK 5)

TEAM	W-L	PREV.
1. UCLA	14-4	4
2. Mississippi State	18-2	5
3. Stanford	12-3	3
4. Oregon State	14-3-1	2
5. Vanderbilt	15-5	1
6. Georgia	18-2	9
7. Louisville	16-4	11
8. Arkansas	17-2	13
9. LSU	15-5	10
10. NC State	19-1	18
11. Texas	15-7	15
12. Arizona State	19-0	20
13. Texas Tech	12-5	8
14. Auburn	18-2	17
15. North Carolina	16-5	14
16. Florida	15-7	6
17. Florida State	14-4	7
18. Coastal Carolina	16-4-1	16
19. Texas A&M	17-5	22
20. Ole Miss	14-6	12
21. East Carolina	15-6	19
22. Michigan	13-4	26
23. UC Irvine	12-4	27
24. TCU	12-6	25
25. Clemson	14-5	21
26. Oklahoma	16-4	NR
27. Tennessee	17-4	23
28. UC Santa Barbara	14-3	NR
29. Baylor	13-5	28
30. Illinois	13-3	NR

NCAA Top 25

(WEEK 4)

TEAM	W-L	LW
1. Oregon State	12-1-1	2
2. Vanderbilt	13-3	1
3. UCLA	11-3	4
4. Stanford	12-3	5
5. Mississippi State	15-1	8
6. Florida State	13-1	7
7. Florida	13-5	6
8. Ole Miss	12-3	13
9. Texas Tech	11-3	12
10. Arkansas	12-2	10
11. Georgia	14-2	15
12. NC State	15-0	17
13. LSU	11-4	9
14. Louisville	11-4	14
15. North Carolina	12-4	3
16. Coastal Carolina	13-3-1	16
17. Auburn	14-2	18
18. Texas	12-6	11
19. Arizona State	15-0	23
20. Clemson	12-3	NR
21. Tennessee	15-1	21
22. Texas A&M	15-3	22
23. South Carolina	13-3	24
24. East Carolina	12-5	25
25. Michigan	9-4	19

D1 Baseball Top 25

(WEEK 5)

TEAM	W-L	LW
1. UCLA	14-4	2
2. Mississippi State	18-2	6
3. Stanford	12-3	4
4. Louisville	16-4	7
5. Georgia	18-2	8
6. NC State	19-1	20
7. Oregon State	14-3-1	3
8. Vanderbilt	15-5	1
9. Texas	15-7	12
10. LSU	15-5	13
11. Arkansas	17-2	14
12. Auburn	18-2	18
13. Texas A&M	17-5	19
14. Florida	15-7	5
15. Arizona State	19-0	25
16. North Carolina	16-5	15
17. Coastal Carolina	16-4-1	16
18. Ole Miss	14-6	9
19. Texas Tech	12-5	11
20. East Carolina	15-6	17
21. Florida State	14-4	10
22. TCU	12-6	21
23. UC Irvine	12-4	NR
24. Michigan	13-4	NR
25. Oklahoma	16-4	NR

Others receiving votes (listed alphabetically): Alabama (17-4), Arizona (12-7), Dallas Baptist (14-5), Duke (12-8), Florida Atlantic (14-7), Illinois State (12-6), Indiana State (16-1), Marshall (12-6), Miami (FL) (15-5), Miami (OH) (15-3), Oklahoma State (12-6), Oregon (11-7), Saint Mary's College (13-6), South Carolina (14-6), Southern Miss (11-6), UCF (14-6), Virginia Tech (13-6), Washington (11-5).

SoCon in the NCAA statistics rankings (top 50) – through March 18

TEAM			Stolen bases			Slugging percentage		
Batting average			Team	Rank	SB	Player, team	Rank	PCT
Team	Rank	Avg.	Wofford	1	64	Justice Bigbie, WCU	37	0.708
Western Carolina	10	0.314	UNCG	35	33			
Wofford	23	0.305	The Citadel	39	31			
ETSU	32	0.297						
Mercer	40	0.294						
Double Plays			Stolen bases per game			Hit batters		
Team	Rank	DP	Team	Rank	SB/G	Player, team	Rank	HB
Western Carolina	2	25	Wofford	2	3.05	Austin Higginbotham, Wofford	20	7
Mercer	40	16	UNCG	34	1.83	Ryan Mitschele, WCU	40	6
Double plays per game			Strikeout-to-walk ratio			Derek Tremblay, VMI	40	6
Team	Rank	2B	Team	Rank	K/BB	Chase Walter, WCU	40	6
Western Carolina	2	1.47	Wofford	12	3.37			
Doubles			ETSU	25	2.91			
Team	Rank	2B	Mercer	39	2.68			
Western Carolina	19	43				Hit by pitch		
ETSU	21	42	Triples			Player, team	Rank	HBP
Wofford	44	38	Team	Rank	3B	Ryan Smoot, VMI	2	12
Mercer	44	38	Western Carolina	42	6	Taylor Garris, Samford	14	9
Doubles per game			Triples per game			Luke Robinson, WCU	40	7
Team	Rank	2B/G	Team	Rank	PG			
Western Carolina	9	2.53	Western Carolina	50	0.35			
ETSU	15	2.33	Strikeouts per nine innings			Hit by pitch per game		
Fielding percentage			Team	Rank	K/9	Player, team	Rank	HBP/G
Team	Rank	PG	ETSU	28	1.22	Ryan Smoot, VMI	1	0.80
ETSU	22	0.979	WHIP			Taylor Garris, Samford	26	0.47
Hit batters			Team	Rank	WHIP	Luke Robinson, WCU	49	0.41
Team	Rank	HBP	Won-lost percentage					
Western Carolina	14	32	Team	Rank	Pct.			
Wofford	28	30	ETSU	20	0.778			
Hit by pitch			Samford	31	0.737			
Team	Rank	HBP	UNCG	37	0.722			
Western Carolina	26	32	Walks allowed per nine innings			Hits		
Wofford	30	31	Team	Rank	BB/9	Player, team	Rank	Hits
VMI	41	29	Wofford	3	2.44	Lawson Hill, Wofford	2	37
Hits			ETSU	36	3.18	RJ Yeager, Mercer	38	30
Team	Rank	Hits	INDIVIDUAL			Brooks Carlson, Samford	48	29
Mercer	11	218	Base on Balls					
Wofford	18	209	Player, team	Rank	BB	Hits allowed per nine innings		
Home runs			Hudson Byorick, Wofford	32	18	Player, team	Rank	PG
Team	Rank	HR				Rob Hughes, Furman	11	3.86
Mercer	6	27	Base on balls per game			Hayes Heinecke, Wofford	38	4.78
Western Carolina	43	18	Player, team	Rank	PG			
Home runs per game			Ryan Smoot, VMI	37	1.00	Hits per game		
Team	Rank	HR/G				Player, team	Rank	PG
Mercer	11	1.29	Batting Average			Lawson Hill, Wofford	10	1.76
Western Carolina	31	1.06	Player, team	Rank	Avg.	Will Prater, WCU	29	1.65
On-base percentage			Lawson Hill, Wofford	8	0.457	Justice Bigbie, WCU	47	1.59
Team	Rank	OBP	Justice Bigbie, WCU	35	0.415	Home runs		
Wofford	20	0.409	Complete games			Player, team	Rank	HR
Western Carolina	25	0.406	Player, team	Rank	CG	Kel Johnson, Mercer	4	10
ETSU	33	0.403	Shane Connolly, The Citadel	8	1	RJ Yeager, Mercer	21	6
Runs			Hayes Heinecke, Wofford	8	1	Justice Bigbie, WCU	46	5
Team	Rank	Runs	Zak Kent, VMI	8	1	Luke Robinson, WCU	46	5
Mercer	26	148	Jordan Merritt, The Citadel	8	1	Home runs per game		
Wofford	30	145	Doubles			Player, team	Rank	PG
Western Carolina	31	144	Player, team	Rank	2B	Kel Johnson, Mercer	5	0.50
Sacrifice bunts			Daylan Nanny, WCU	13	9	Pitching appearances		
Team	Rank	SAC	Preston Moore, Samford	41	8	Player, team	Rank	APP
UNCG	14	16	Doubles per game			Alex Bialakis, The Citadel	5	12
Wofford	26	14	Player, team	Rank	2B/G	Will Pillsbury, The Citadel	15	11
Sacrifice flies			Daylan Nanny, WCU	29	0.53	Connor Radcliff, Samford	15	11
Team	Rank	SF	ERA			Nick Spear, Mercer	15	11
Wofford	29	12	Player, team	Rank	ERA	Runs		
UNCG	39	11	Rob Hughes, Furman	7	0.43	Player, team	Rank	Runs
Scoring			Games Started			Kyle Dockus, Mercer	19	24
Team	Rank	R/G	Player, team	Rank	GS	Andrew Orzel, Wofford	29	23
Western Carolina	11	8.5	Cameron Bloodworth, Wofford	18	5	Daylan Nanny, WCU	44	22
Mercer	49	7.0	Shane Connolly, The Citadel	18	5	RBIs		
Shutouts			David Dunlavey, Furman	18	5	Player, team	Rank	RBIs
Team	Rank	SHO	Tanner Hall, Mercer	18	5	Kel Johnson, Mercer	11	27
Wofford	30	2	Hayes Heinecke, Wofford	18	5	Runs batted in per game		
Slugging percentage			Zach Hester, Samford	18	5	Player, team	Rank	PG
Team	Rank	SLG	Austin Higginbotham, Wofford	18	5	Kel Johnson, Mercer	23	1.35
Western Carolina	7	0.498	Micah Kaczor, ETSU	18	5	Justice Bigbie, WCU	50	1.24
ETSU	25	0.464	Zak Kent, VMI	18	5	Runs per game		
Mercer	27	0.460	Landon Knack, ETSU	18	5	Player, team	Rank	PG
			Jesse McCord, Samford	18	5	Daylan Nanny, WCU	27	1.29
			Jacob Menders, VMI	18	5	Justice Bigbie, WCU	35	1.24
			Jordan Merritt, The Citadel	18	5	Sacrifice bunts		
			Taylor Purus, WCU	18	5	Player, team	Rank	SAC
			Phillip Sanderson, UNCG	18	5	Austin Embler, UNCG	28	4
			Dylan Spence, The Citadel	18	5	Matthew Koehler, WCU	28	4
			Samuel Strickland, Samford	18	5	Sacrifice bunts per game		
						Player, team	Rank	PG
						Matthew Koehler, WCU	41	0.24
						Sacrifice flies		
						Player, team	Rank	SF
						David Flores, UNCG	28	3
						Greg Hardison, UNCG	28	3
						Lawson Hill, Wofford	28	3
						Will Knight, VMI	28	3
						Saves		
						Player, team	Rank	Saves
						Stephen Jones, Samford	1	7
						Reece Maniscalco, Wofford	38	4

**2019 Southern Conference Baseball
SoCon Batting Leaders (as of Mar 21, 2019)
(All games)**

Hitting minimums - 1 Games 50% of Games 2.0 AB/Game 2.5 TPA/Game
Pitching minimums - 1 Games 1.0 IP/Game

Batting avg		Slugging pct		On base pct	
1. Wofford	.311	1. Western Carolina	.494	1. Wofford	.415
2. Western Carolina	.309	2. Mercer	.461	2. Western Carolina	.402
3. ETSU	.292	3. ETSU	.456	3. ETSU	.399
4. Mercer	.291	4. Wofford	.419	4. UNCG	.382
5. UNCG	.284	5. Samford	.403	5. Mercer	.377
6. Samford	.268	6. UNCG	.382	6. Samford	.373
7. Furman	.243	7. Furman	.371	7. VMI	.341
8. The Citadel	.230	8. VMI	.314	8. Furman	.321
9. VMI	.230	9. The Citadel	.303	9. The Citadel	.295
Runs scored		Hits		Runs batted in	
1. Wofford	167	1. Wofford	234	1. Mercer	147
2. Mercer	156	2. Mercer	226	2. Wofford	142
3. Western Carolina	148	3. Western Carolina	192	3. Western Carolina	129
4. ETSU	125	4. ETSU	185	4. ETSU	115
5. Samford	117	5. Samford	178	5. Samford	106
6. UNCG	106	6. UNCG	174	6. UNCG	88
7. VMI	97	7. VMI	155	7. VMI	87
8. Furman	84	8. The Citadel	153	8. Furman	80
9. The Citadel	77	9. Furman	150	9. The Citadel	70
Doubles		Triples		Home runs	
1. Western Carolina	45	1. Western Carolina	8	1. Mercer	30
2. Wofford	43	2. ETSU	5	2. Western Carolina	18
ETSU	43	3. Wofford	4	3. ETSU	17
4. Mercer	38	UNCG	4	Samford	17
5. Samford	37	5. The Citadel	3	5. Furman	16
6. The Citadel	27	Furman	3	6. Wofford	10
VMI	27	VMI	3	UNCG	10
8. Furman	25	8. Mercer	2	8. VMI	8
9. UNCG	22	9. Samford	1	9. The Citadel	5
Total bases		Total plate appearances		At bats	
1. Mercer	358	1. Wofford	927	1. Mercer	777
2. Wofford	315	2. Mercer	910	2. Wofford	752
3. Western Carolina	307	3. VMI	808	3. VMI	675
4. ETSU	289	4. Samford	795	4. Samford	665
5. Samford	268	5. ETSU	765	5. The Citadel	664
6. UNCG	234	6. UNCG	748	6. ETSU	634
7. Furman	229	7. The Citadel	745	7. Western Carolina	621
8. VMI	212	8. Western Carolina	739	8. Furman	618
9. The Citadel	201	9. Furman	696	9. UNCG	613
Walks		Hit by pitch		Strikeouts	
1. Wofford	111	1. Western Carolina	33	1. VMI	198
2. ETSU	93	Wofford	33	2. Furman	171
3. Mercer	91	3. VMI	29	3. Samford	167
4. VMI	88	Samford	29	4. Mercer	156
5. Samford	87	5. ETSU	25	5. The Citadel	153
6. UNCG	82	6. UNCG	23	6. Wofford	138
7. Western Carolina	69	7. Mercer	21	7. ETSU	131
8. Furman	68	8. The Citadel	10	8. Western Carolina	122
9. The Citadel	53	9. Furman	5	9. UNCG	120
Sac bunts		Sac flies		Stolen bases	
1. UNCG	18	1. Wofford	15	1. Wofford	77
2. Wofford	16	2. UNCG	12	2. The Citadel	36
3. Mercer	13	3. Western Carolina	9	3. UNCG	32
4. The Citadel	12	4. ETSU	8	4. Mercer	28
5. VMI	10	Mercer	8	5. ETSU	27
6. Western Carolina	7	6. Samford	7	6. VMI	18
Samford	7	7. The Citadel	6	Western Carolina	18
8. ETSU	5	VMI	6	8. Samford	15
9. Furman	2	9. Furman	3	9. Furman	8

Caught stealing

1. The Citadel	12
Western Carolina	12
3. Wofford	11
4. UNCG	10
5. Mercer	6
6. Samford	5
VMI	5
ETSU	5
9. Furman	3

Steal attempts

1. Wofford	88
2. The Citadel	48
3. UNCG	42
4. Mercer	34
5. ETSU	32
6. Western Carolina	30
7. VMI	23
8. Samford	20
9. Furman	11

Grounded into DP

1. Samford	17
2. ETSU	12
Furman	12
4. Wofford	11
UNCG	11
Western Carolina	11
VMI	11
8. The Citadel	10
9. Mercer	3

**2019 Southern Conference Baseball
SoCon Pitching Leaders (as of Mar 21, 2019)
(All games)**

Hitting minimums - 1 Games 50% of Games 2.0 AB/Game 2.5 TPA/Game
Pitching minimums - 1 Games 1.0 IP/Game

Earned run avg		Opposing bat avg		Innings pitched	
1. Wofford	3.58	1. ETSU	.232	1. Wofford	206.1
2. ETSU	3.60	2. UNCG	.242	2. Mercer	194.0
3. UNCG	3.86	3. VMI	.246	3. The Citadel	183.0
4. Samford	3.86	4. The Citadel	.250	4. Samford	177.0
5. The Citadel	3.98	5. Wofford	.254	5. VMI	175.1
6. VMI	5.80	6. Western Carolina	.264	6. UNCG	170.1
7. Western Carolina	5.85	7. Samford	.273	7. ETSU	167.2
8. Mercer	6.08	8. Furman	.276	8. Western Carolina	160.0
9. Furman	6.12	9. Mercer	.293	9. Furman	156.0
Batters struck out		Batters SO out looking		Wins	
1. Mercer	210	1. UNCG	66	1. Wofford	16
2. Wofford	190	2. Samford	62	2. ETSU	14
3. UNCG	174	3. Wofford	55	Samford	14
4. ETSU	173	4. ETSU	52	4. UNCG	13
5. Samford	168	5. Furman	50	5. Mercer	11
6. VMI	158	6. Western Carolina	47	6. Western Carolina	10
7. The Citadel	136	Mercer	47	7. The Citadel	6
8. Furman	134	8. VMI	41	8. Furman	5
9. Western Carolina	130	9. The Citadel	39	9. VMI	4
Losses		Saves		Runners picked off	
1. VMI	16	1. Samford	9	1. UNCG	8
2. The Citadel	14	2. Wofford	7	2. Furman	4
3. Furman	12	3. ETSU	5	Mercer	4
4. Mercer	11	4. Mercer	4	The Citadel	4
5. Western Carolina	8	UNCG	4	Wofford	4
6. Wofford	7	6. Furman	2	6. Western Carolina	2
7. Samford	6	Western Carolina	2	VMI	2
UNCG	6	8. The Citadel	1	8. ETSU	1
9. ETSU	5				
Sac bunts allowed		Sac flies allowed		Hits allowed	
1. VMI	17	1. Furman	12	1. ETSU	144
2. Western Carolina	15	2. The Citadel	10	2. UNCG	158
3. The Citadel	13	3. Western Carolina	9	3. Western Carolina	160
4. Furman	10	Mercer	9	4. VMI	166
5. Wofford	9	5. Samford	8	5. Furman	170
6. Samford	8	6. Wofford	7	6. The Citadel	178
7. ETSU	7	ETSU	7	7. Samford	185
Mercer	7	8. UNCG	5	8. Wofford	206
9. UNCG	6	9. VMI	2	9. Mercer	229
Runs allowed		Earned runs allowed		Walks allowed	
1. ETSU	76	1. ETSU	67	1. Wofford	57
2. UNCG	82	2. UNCG	73	2. ETSU	61
3. Samford	92	3. Samford	76	3. Furman	66
4. Wofford	103	4. The Citadel	81	4. Samford	72
5. The Citadel	112	5. Wofford	82	5. VMI	82
6. Western Carolina	123	6. Western Carolina	104	6. Mercer	84
7. VMI	125	7. Furman	106	7. UNCG	87
8. Furman	129	8. VMI	113	8. The Citadel	92
9. Mercer	147	9. Mercer	131	9. Western Carolina	93
Doubles allowed		Triples allowed		Home runs allowed	
1. Western Carolina	28	1. The Citadel	2	1. ETSU	7
2. ETSU	29	Wofford	2	2. The Citadel	8
3. Samford	32	Furman	2	3. UNCG	9
4. Mercer	36	Mercer	2	4. Wofford	12
The Citadel	36	5. VMI	3	5. Samford	15
6. Furman	37	6. UNCG	4	6. Western Carolina	16
UNCG	37	7. Samford	5	7. VMI	17
8. Wofford	41	8. Western Carolina	6	8. Furman	21
9. VMI	47	ETSU	6	9. Mercer	26

Wild pitches

1. Western Carolina	39
2. The Citadel	26
3. Wofford	24
4. Mercer	21
5. Furman	16
6. Samford	14
7. UNCG	13
VMI	13
9. ETSU	5

Intentional BB allowed

1. Western Carolina	3
2. The Citadel	7
3. Samford	5
4. ETSU	2
5. VMI	1
6. Mercer	4
7. Wofford	1

Balks

1. ETSU	3
2. Furman	2
Samford	2
Western Carolina	2
5. The Citadel	1
VMI	1
UNCG	1

Hit batters

1. Western Carolina	33
2. Wofford	31
3. The Citadel	24
4. VMI	23
5. Mercer	20
6. Samford	16
Furman	16
8. UNCG	14
9. ETSU	13

**2019 Southern Conference Baseball
SoCon Fielding Leaders (as of Mar 21, 2019)
(All games)**

Hitting minimums - 1 Games 50% of Games
Pitching minimums - 1 Games 1.0 IP/Game

Fielding pct		Chances		Putouts	
1. ETSU	.977	1. Wofford	849	1. Wofford	619
2. UNCG	.970	2. Mercer	815	2. Mercer	582
3. VMI	.969	3. The Citadel	798	3. The Citadel	549
4. Mercer	.968	4. Samford	765	4. Samford	531
5. Samford	.967	5. VMI	743	5. VMI	526
6. Wofford	.965	6. UNCG	734	6. UNCG	511
7. Furman	.962	7. Western Carolina	713	7. ETSU	503
8. Western Carolina	.954	8. ETSU	692	8. Western Carolina	480
9. The Citadel	.941	9. Furman	659	9. Furman	468
Assists		Errors		Fielding double plays	
1. Samford	209	1. The Citadel	47	1. Western Carolina	25
2. Mercer	207	2. Western Carolina	33	2. Mercer	18
3. The Citadel	202	3. Wofford	30	3. The Citadel	17
4. UNCG	201	4. Mercer	26	4. Samford	15
5. Wofford	200	5. Furman	25	5. Wofford	10
Western Carolina	200	Samford	25	UNCG	10
7. VMI	194	7. VMI	23	7. VMI	9
8. ETSU	173	8. UNCG	22	ETSU	9
9. Furman	166	9. ETSU	16	9. Furman	7
Stolen bases against		Caught stealing by		Steal attempts against	
1. VMI	25	1. Samford	12	1. VMI	32
Furman	25	2. ETSU	9	2. Furman	30
3. The Citadel	23	3. The Citadel	7	The Citadel	30
4. Mercer	20	Wofford	7	4. Western Carolina	27
Western Carolina	20	Western Carolina	7	5. Mercer	24
6. UNCG	14	VMI	7	Samford	24
7. Wofford	13	7. UNCG	6	7. Wofford	20
8. Samford	12	8. Furman	5	UNCG	20
9. ETSU	6	9. Mercer	4	9. ETSU	15
Passed balls		Catchers interference			
1. Mercer	8	1. The Citadel	1		
2. The Citadel	7				
3. Wofford	4				
Samford	4				
UNCG	4				
Furman	4				
7. Western Carolina	3				
8. ETSU	2				
VMI	2				

**2019 Southern Conference Baseball
SoCon Batting Leaders (as of Mar 21, 2019)
(All games)**

Hitting minimums - 1 Games 50% of Games 2.0 AB/Game 2.5 TPA/Game
Pitching minimums - 1 Games 1.0 IP/Game

Batting avg		Slugging pct		On base pct	
1. Lawson Hill-WOF	.443	1. Kel Johnson-MER	.756	1. Cullen Smith-ETSU	.500
2. Justice Bigbie-WCU	.406	2. Matthew Koehler-WCU	.701	2. Justice Bigbie-WCU	.494
3. Cullen Smith-ETSU	.391	3. Justice Bigbie-WCU	.681	Mike Brown-WOF	.494
4. Brooks Carlson-SAM	.385	4. Cullen Smith-ETSU	.667	4. Lawson Hill-WOF	.480
5. Will Prater-WCU	.378	5. Ethan Cady-ETSU	.657	5. Matthew Koehler-WCU	.468
6. Matthew Koehler-WCU	.373	6. Brooks Carlson-SAM	.615	6. Hudson Byorick-WOF	.468
7. Mike Brown-WOF	.364	7. RJ Yeager-MER	.602	7. Brooks Carlson-SAM	.462
8. John Michael Boswell-FUR	.362	8. John Michael Boswell-FUR	.580	8. Jackson Greer-ETSU	.449
9. Colby Emmertz-ETSU	.358	Jackson Greer-ETSU	.580	9. EMBLER, Austin-UNCG	.446
10. Angelo DiSpigna-MER	.358	10. Daylan Nanny-WCU	.573	10. Ryan Smoot-VMI	.443
Runs scored		Hits		Runs batted in	
1. Andrew Orzel-WOF	25	1. Lawson Hill-WOF	39	1. Kel Johnson-MER	32
Kyle Dockus-MER	25	2. RJ Yeager-MER	30	2. Justice Bigbie-WCU	23
3. Daylan Nanny-WCU	22	Brett Rodriguez-WOF	30	3. RJ Yeager-MER	22
Mike Brown-WOF	22	Brooks Carlson-SAM	30	4. Hudson Byorick-WOF	21
RJ Yeager-MER	22	5. Tyler Corbitt-CIT	29	5. Luke Robinson-WCU	20
Brett Rodriguez-WOF	22	Angelo DiSpigna-MER	29	6. Ethan Cady-ETSU	19
7. Kel Johnson-MER	21	7. Kel Johnson-MER	28	7. Garrett Wilkinson-MER	18
Justice Bigbie-WCU	21	Jake Huggins-VMI	28	Cade Gilbert-ETSU	18
9. Will Prater-WCU	20	Will Prater-WCU	28	9. Jake Huggins-VMI	17
10. 3 tied at.....	19	Justice Bigbie-WCU	28	Jackson Greer-ETSU	17
Doubles		Triples		Home runs	
1. Tyler Corbitt-CIT	9	1. Matthew Koehler-WCU	3	1. Kel Johnson-MER	12
Daylan Nanny-WCU	9	Ethan Cady-ETSU	3	2. RJ Yeager-MER	6
3. Preston Moore-SAM	8	3. Jalen Jones-WCU	2	3. Luke Robinson-WCU	5
4. Garrett Wilkinson-MER	7	Jabari Richards-FUR	2	Justice Bigbie-WCU	5
Will Knight-VMI	7	KUCHMANER, Zach-UNCG	2	5. 7 tied at.....	4
John Dempsey-WOF	7	6. 21 tied at.....	1		
Zach Miller-MER	7				
Cullen Smith-ETSU	7				
Brooks Carlson-SAM	7				
Josh Hollifield-VMI	7				
Total bases		Walks		Hit by pitch	
1. Kel Johnson-MER	65	1. Hudson Byorick-WOF	19	1. Ryan Smoot-VMI	12
2. RJ Yeager-MER	56	2. Ryan Smoot-VMI	15	2. Taylor Garris-SAM	9
3. Brooks Carlson-SAM	48	3. Ethan Cady-ETSU	14	3. Luke Robinson-WCU	8
4. Justice Bigbie-WCU	47	Brett Rodriguez-WOF	14	4. Mike Brown-WOF	6
Matthew Koehler-WCU	47	Cullen Smith-ETSU	14	Jackson Greer-ETSU	6
6. Cullen Smith-ETSU	46	EMBLER, Austin-UNCG	14	6. Josh Congdon-WOF	5
7. Ethan Cady-ETSU	44	7. Jackson Greer-ETSU	13	Anthony Mulrine-SAM	5
8. Daylan Nanny-WCU	43	Kaden Dreier-SAM	13	Jake Lyle-ETSU	5
Lawson Hill-WOF	43	9. 8 tied at.....	12	Immanuel Wilder-WCU	5
10. Angelo DiSpigna-MER	42			Andrew Orzel-WOF	5
Sac bunts		Sac flies		Stolen bases	
1. EMBLER, Austin-UNCG	5	1. Lawson Hill-WOF	4	1. Mike Brown-WOF	17
2. Matthew Koehler-WCU	4	2. FLORES, David-UNCG	3	2. Jeffery Brown-CIT	14
Kyle Dockus-MER	4	HARDISON, Greg-UNCG	3	3. Brett Rodriguez-WOF	12
KOONCE, Jacquez-UNCG	4	Will Knight-VMI	3	4. Andrew Orzel-WOF	10
5. 7 tied at.....	3	5. 12 tied at.....	2	5. Ethan Cady-ETSU	9
				KOONCE, Jacquez-UNCG	9
				Colin Davis-WOF	9
				Kyle Dockus-MER	9
				9. Matty Brown-WOF	8
				Lane Botkin-CIT	8

March 21, 2019

Total plate appearances

1. Andrew Orzel-WOF	112
2. Kyle Dockus-MER	109
3. RJ Yeager-MER	108
4. Brett Rodriguez-WOF	106
5. Lawson Hill-WOF	103
6. Callen Nuccio-VMI	98
7. Trevor Austin-MER	97
8. Colin Davis-WOF	96
Jake Huggins-VMI	96
Zach Miller-MER	96

Strikeouts

1. Dax Roper-FUR	27
2. Preston Moore-SAM	26
Jordan Fucci-SAM	26
4. Kel Johnson-MER	24
Ryan McCarthy-CIT	24
6. Callen Nuccio-VMI	23
Ethan Cady-ETSU	23
Angelo DiSpigna-MER	23
9. Jordan Starkes-FUR	22
10. Cody Warner-VMI	21

At bats

1. Andrew Orzel-WOF	97
2. RJ Yeager-MER	93
3. Kyle Dockus-MER	90
4. Brett Rodriguez-WOF	89
5. Lawson Hill-WOF	88
6. Kel Johnson-MER	86
7. Callen Nuccio-VMI	84
Trevor Austin-MER	84
9. Jeffery Brown-CIT	83
10. 3 tied at.....	82

Caught stealing

1. Matthew Koehler-WCU	4
2. Ryan McCarthy-CIT	3
Hudson Byorick-WOF	3
Kyle Dockus-MER	3
5. 8 tied at.....	2

Steal attempts

1. Mike Brown-WOF	18
2. Jeffery Brown-CIT	15
3. Brett Rodriguez-WOF	13
4. Kyle Dockus-MER	12
5. Matthew Koehler-WCU	11
6. Colin Davis-WOF	10
KOONCE, Jacquez-UNCG	10
Andrew Orzel-WOF	10
9. Lane Botkin-CIT	9
Ethan Cady-ETSU	9

Grounded into DP

1. Luke Robinson-WCU	5
2. Ryan Crockett-SAM	3
Colby Emmertz-ETSU	3
Anthony Mulrine-SAM	3
Tilo Skole-CIT	3
John Michael Boswell-FUR	3
MADOLE, Josh-UNCG	3
CAVENESS, Ryan-UNCG	3
Taylor Garris-SAM	3
10. 9 tied at.....	2

**2019 Southern Conference Baseball
SoCon Pitching Leaders (as of Mar 21, 2019)
(All games)**

Hitting minimums - 1 Games 50% of Games 2.0 AB/Game 2.5 TPA/Game
Pitching minimums - 1 Games 1.0 IP/Game

Earned run avg		Opposing bat avg		Innings pitched	
1. Rob Hughes-FUR	0.43	1. Rob Hughes-FUR	.130	1. Jordan Merritt-CIT	36.2
2. Shane Connolly-CIT	1.67	2. Hayes Heinecke-WOF	.152	2. Austin Higginbotham-WOF	32.2
3. Micah Kaczor-ETSU	1.71	3. Jacob Menders-VMI	.173	3. Micah Kaczor-ETSU	31.2
4. Hayes Heinecke-WOF	1.71	4. Zak Kent-VMI	.174	4. Landon Knack-ETSU	31.0
5. Landon Knack-ETSU	1.74	5. TRIPLETT, Jeremiah-UNCG	.184	5. Zak Kent-VMI	30.2
6. Jacob Menders-VMI	1.91	6. Daniel Sweeney-ETSU	.200	6. Daniel Sweeney-ETSU	29.2
7. Jordan Merritt-CIT	1.96	7. Zach Franklin-WCU	.205	7. Jacob Menders-VMI	28.1
8. Daniel Sweeney-ETSU	2.12	8. Micah Kaczor-ETSU	.205	8. TRIPLETT, Jeremiah-UNCG	27.2
9. Zach Franklin-WCU	2.39	9. Matt Lazzaro-FUR	.220	9. 4 tied at.....	27.0
10. Kevin Coulter-MER	2.45	10. Landon Knack-ETSU	.222		
Batters struck out		Batters SO out looking		Wins	
1. Zak Kent-VMI	46	1. SANDERSON, Phillip-UNCG	13	1. Landon Knack-ETSU	4
2. Landon Knack-ETSU	37	2. Daniel Sweeney-ETSU	11	Hayes Heinecke-WOF	4
3. Sawyer Gipson-Long-MER	30	Austin Higginbotham-WOF	11	Austin Higginbotham-WOF	4
4. Chase Walter-WCU	29	Landon Knack-ETSU	11	4. Jacob Corn-WCU	3
5. Austin Higginbotham-WOF	27	Zach Hester-SAM	11	Micah Kaczor-ETSU	3
Jake Hershman-WOF	27	David Dunlavey-FUR	11	Daniel Sweeney-ETSU	3
Micah Kaczor-ETSU	27	Zak Kent-VMI	11	Samuel Strickland-SAM	3
8. Kevin Coulter-MER	26	8. Alex Bialakis-CIT	10	8. 17 tied at.....	2
Zach Hester-SAM	26	STEPHENS, Brandon-UNCG	10		
10. 4 tied at.....	25	10. 5 tied at.....	9		
Saves		Appearances		Games started	
1. Stephen Jones-SAM	7	1. Alex Bialakis-CIT	13	1. 19 tied at.....	5
2. Reese Maniscalco-WOF	4	2. Nick Spear-MER	12		
3. James Giambalvo-ETSU	3	Will Pillsbury-CIT	12		
Kevin Coulter-MER	3	4. Carson Cupo-SAM	11		
5. STEPHENS, Brandon-UNCG	2	Connor Radcliff-SAM	11		
SYKES, Chad-UNCG	2	Holton McGaha-MER	11		
7. 13 tied at.....	1	Stephen Jones-SAM	11		
		JACKSON, Corey-UNCG	11		
		9. Scott Smith-MER	10		
		10. 9 tied at.....	9		
Games finished		Games in relief		Sac bunts allowed	
1. Stephen Jones-SAM	11	1. Alex Bialakis-CIT	13	1. Jordan Merritt-CIT	5
2. SYKES, Chad-UNCG	9	2. Will Pillsbury-CIT	12	Cameron Bloodworth-WOF	5
3. Rob Hughes-FUR	8	Nick Spear-MER	12	3. Adam Jewell-VMI	3
4. Reese Maniscalco-WOF	6	4. Holton McGaha-MER	11	David Dunlavey-FUR	3
Kevin Coulter-MER	6	Connor Radcliff-SAM	11	Nathan Light-VMI	3
Jacob Corn-WCU	6	JACKSON, Corey-UNCG	11	Zach Sanders-VMI	3
7. Jordan Buster-CIT	5	Carson Cupo-SAM	11	Zach Franklin-WCU	3
James Giambalvo-ETSU	5	Stephen Jones-SAM	11	Jacob Menders-VMI	3
9. 4 tied at.....	4	9. Scott Smith-MER	10	SYKES, Chad-UNCG	3
		10. 5 tied at.....	9	Jack Snyder-WCU	3
Sac flies allowed		Losses		Runners picked off	
1. Beau Healy-MER	3	1. David Dunlavey-FUR	4	1. HOLSHOUSER, Maddux-UNCG	5
2. 14 tied at.....	2	2. Michael Spence-VMI	3	2. Kevin Coulter-MER	3
		Chase Walter-WCU	3	3. David Dunlavey-FUR	2
		Jordan Flanders-CIT	3	4. 19 tied at.....	1
		Sawyer Gipson-Long-MER	3		
		Jordan Merritt-CIT	3		
		Tanner Hall-MER	3		
		8. 16 tied at.....	2		

March 21, 2019

Wild pitches

1. Chase Walter-WCU	8
2. Jacob Corn-WCU	7
3. Ryan Mitschele-WCU	6
4. Sawyer Gipson-Long-MER	5
Jake Zoller-WOF	5
6. 8 tied at.....	4

Balks

1. Trey Oglesby-ETSU	2
2. 10 tied at.....	1

Hit batters

1. Austin Higginbotham-WOF	7
2. Chase Walter-WCU	6
Ryan Mitschele-WCU	6
Derek Tremblay-VMI	6
5. Taylor Purus-WCU	5
Jordan Buster-CIT	5
7. 6 tied at.....	4

Intentional BB allowed

1. Chase Walter-WCU	1
Jordan Merritt-CIT	1
Connor Radcliff-SAM	1
Joe Vranesic-WCU	1
Jacob Corn-WCU	1
Samuel Strickland-SAM	1
7. Alex Bialakis-CIT	2
Carson Cupo-SAM	2
9. Josh Farmer-MER	1
Billy Creger-SAM	1

Hits allowed

1. Rob Hughes-FUR	9
2. Hayes Heinecke-WOF	14
3. Jacob Mendrs-VMI	17
4. Zach Franklin-WCU	18
5. TRIPLETT, Jeremiah-UNCG	19
6. Matt Lazzaro-FUR	20
Zak Kent-VMI	20
8. KOEHN, Austin-UNCG	21
9. Daniel Sweeney-ETSU	22
10. Shane Connolly-CIT	23

Runs allowed

1. Rob Hughes-FUR	2
2. Micah Kaczor-ETSU	6
Hayes Heinecke-WOF	6
4. Kevin Coulter-MER	7
Jacob Mendrs-VMI	7
6. Zach Franklin-WCU	8
Jake Hershman-WOF	8
8. Zach Hester-SAM	9
TRIPLETT, Jeremiah-UNCG	9
Landon Knack-ETSU	9

Earned runs allowed

1. Rob Hughes-FUR	1
2. Hayes Heinecke-WOF	5
Shane Connolly-CIT	5
4. Kevin Coulter-MER	6
Landon Knack-ETSU	6
Micah Kaczor-ETSU	6
Jacob Mendrs-VMI	6
8. Daniel Sweeney-ETSU	7
Jake Hershman-WOF	7
Zach Franklin-WCU	7

Walks allowed

1. Cameron Bloodworth-WOF	2
Daniel Sweeney-ETSU	2
3. Nik Verbeke-FUR	4
Zach Hester-SAM	4
Kevin Coulter-MER	4
Landon Knack-ETSU	4
Jordan Merritt-CIT	4
8. Jake Hershman-WOF	5
Rob Hughes-FUR	5
10. Micah Kaczor-ETSU	6

Doubles allowed

1. Rob Hughes-FUR	2
Jake Hershman-WOF	2
Zach Franklin-WCU	2
TRIPLETT, Jeremiah-UNCG	2
5. Hayes Heinecke-WOF	3
Beau Healy-MER	3
7. KOEHN, Austin-UNCG	4
Zach Hester-SAM	4
Dylan Spence-CIT	4
Micah Kaczor-ETSU	4

Triples allowed

1. David Dunlavey-FUR	0
Adam Jewell-VMI	0
Zak Kent-VMI	0
Cameron Bloodworth-WOF	0
Rob Hughes-FUR	0
Jake Hershman-WOF	0
Samuel Strickland-SAM	0
Nik Verbeke-FUR	0
Jordan Merritt-CIT	0
Shane Connolly-CIT	0

Home runs allowed

1. TRIPLETT, Jeremiah-UNCG	0
KOEHN, Austin-UNCG	0
Dylan Spence-CIT	0
Cameron Bloodworth-WOF	0
Hayes Heinecke-WOF	0
Rob Hughes-FUR	0
Landon Knack-ETSU	0
8. Daniel Sweeney-ETSU	1
Jacob Mendrs-VMI	1
Kevin Coulter-MER	1

**2019 Southern Conference Baseball
SoCon Fielding Leaders (as of Mar 21, 2019)
(All games)**

Hitting minimums - 1 Games 50% of Games
Pitching minimums - 1 Games 1.0 IP/Game

Fielding pct		Chances		Putouts	
1. MADOLE, Josh-UNCG	1.000	1. Andrew Orzel-WOF	191	1. Andrew Orzel-WOF	182
John Michael Boswell-FUR	1.000	2. Ben Peden-CIT	187	2. MADOLE, Josh-UNCG	167
Ryan Smoot-VMI	1.000	3. MADOLE, Josh-UNCG	182	3. Ben Peden-CIT	164
Lawson Hill-WOF	1.000	4. CAVENESS, Ryan-UNCG	176	4. CAVENESS, Ryan-UNCG	163
Alex Crotty-MER	1.000	5. Noah Hill-ETSU	162	5. Noah Hill-ETSU	152
Daylan Nanny-WCU	1.000	6. Luke Robinson-WCU	156	6. Brooks Carlson-SAM	143
Kaden Dreier-SAM	1.000	7. Angelo DiSpigna-MER	154	7. John Michael Boswell-FUR	142
Will Knight-VMI	1.000	8. Brooks Carlson-SAM	152	Angelo DiSpigna-MER	142
David Webel-FUR	1.000	John Michael Boswell-FUR	152	9. Jackson Greer-ETSU	132
Jordan Fucci-SAM	1.000	10. Jackson Greer-ETSU	146	Luke Robinson-WCU	132
Assists		Fielding double plays		Passed balls	
1. Kyle Dockus-MER	62	1. Will Prater-WCU	17	1. Collin Price-MER	4
2. Branden Fryman-SAM	57	2. Jalen Jones-WCU	16	CAVENESS, Ryan-UNCG	4
Tilo Skole-CIT	57	Ben Peden-CIT	16	3. Will Bastian-CIT	3
Taylor Garris-SAM	57	4. RJ Yeager-MER	15	Luke Robinson-WCU	3
5. Jalen Jones-WCU	54	Kyle Dockus-MER	15	Bryce Leasure-CIT	3
6. Jake Lyle-ETSU	51	6. Tilo Skole-CIT	13	6. 7 tied at.....	2
EMBLER, Austin-UNCG	51	Angelo DiSpigna-MER	13		
8. RJ Yeager-MER	49	Taylor Garris-SAM	13		
9. WEBSTER, Caleb-UNCG	48	9. Brooks Carlson-SAM	12		
10. 2 tied at.....	47	10. Tyler Corbitt-CIT	11		
Catchers interference		Steal attempts against		Stolen bases against	
1. Will Bastian-CIT	1	1. Ryan Smoot-VMI	24	1. Ryan Smoot-VMI	19
		2. CAVENESS, Ryan-UNCG	19	2. Bryce Leasure-CIT	15
		3. Anthony Mulrine-SAM	18	3. CAVENESS, Ryan-UNCG	14
		4. Bryce Leasure-CIT	17	Luke Robinson-WCU	14
		Luke Robinson-WCU	17	5. Logan Taplett-FUR	13
		6. Logan Taplett-FUR	13	6. Chase Walter-WCU	11
		Chase Walter-WCU	13	7. Anthony Mulrine-SAM	9
		8. Jackson Greer-ETSU	12	8. Alex Crotty-MER	8
		9. Matt Keane-VMI	10	Collin Price-MER	8
		Logan Kellerman-FUR	10	Matt Keane-VMI	8
Caught stealing by		Errors			
1. Anthony Mulrine-SAM	9	1. J.D. Davis-CIT	9		
2. Jackson Greer-ETSU	7	Bret Huebner-FUR	9		
3. CAVENESS, Ryan-UNCG	5	3. Tilo Skole-CIT	8		
Ryan Smoot-VMI	5	John Dempsey-WOF	8		
5. Micah Kaczor-ETSU	4	5. Tyler Corbitt-CIT	7		
6. 6 tied at.....	3	RJ Yeager-MER	7		
		Preston Moore-SAM	7		
		Reed Massey-WOF	7		
		9. 4 tied at.....	6		

